



# River Values – Update

Darryl Jones

NRC Environment Management Committee

24 September 2013

# What have we done?

- Trialled the RiVAS method on three values: natural character, native fish and river swimming
- Used the “hybrid supply and use” method to assess the economic value of water use, including stock water use and public water supply
- Both methods allow rivers/catchments to be ranked in importance across the region

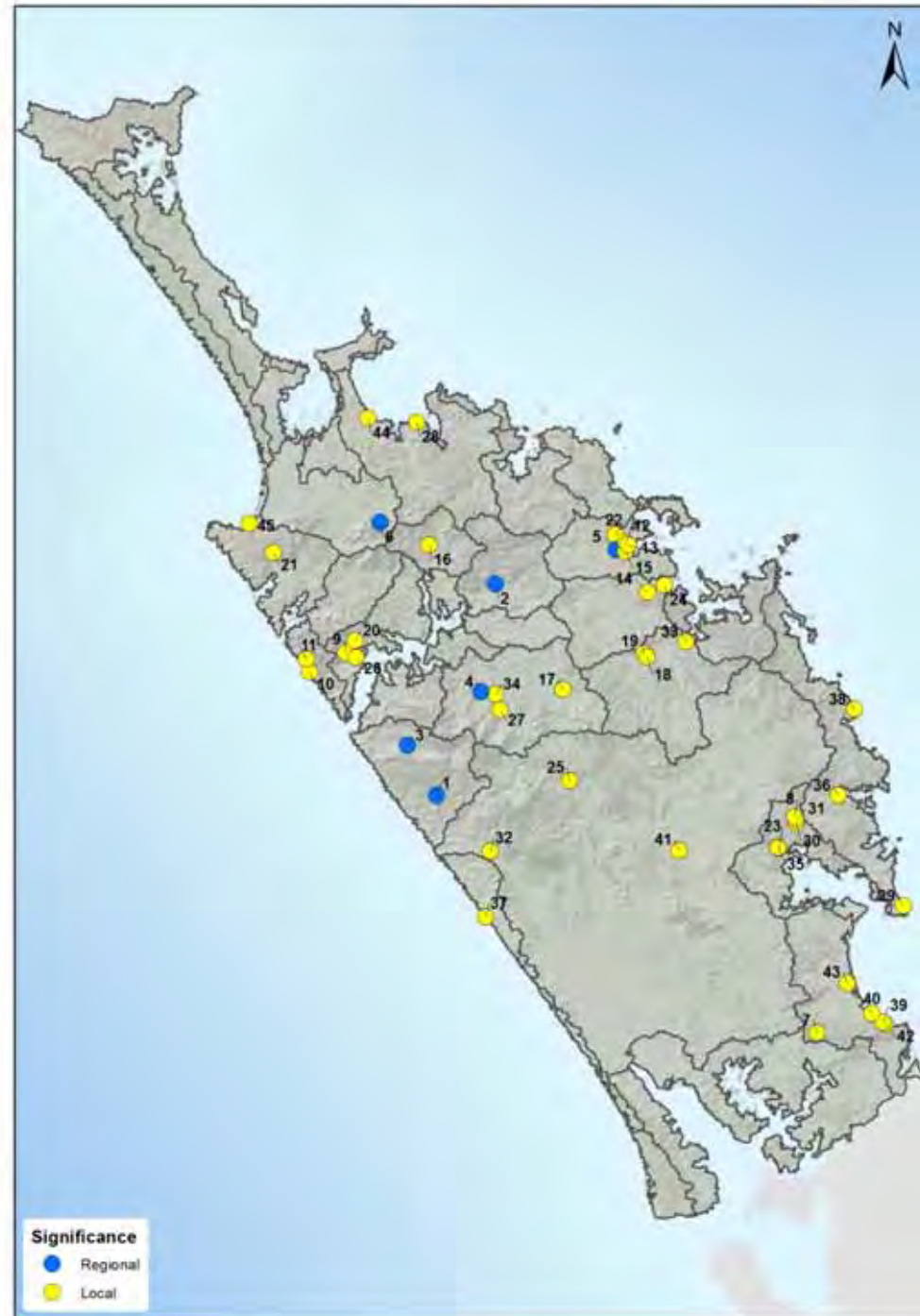
# Native fish

- 27 river catchment / clusters
- 9 – national
- 18 – regional
- 0 – local
- 3 of 9 due to total score
- 6 of 9 due to presence of declining species



# River swimming

- 45 known swimming sites
- 39 of local significance
- 6 of regional significance
- Four at edge of DoC land
- Two are high use, distance travelled



## Natural character

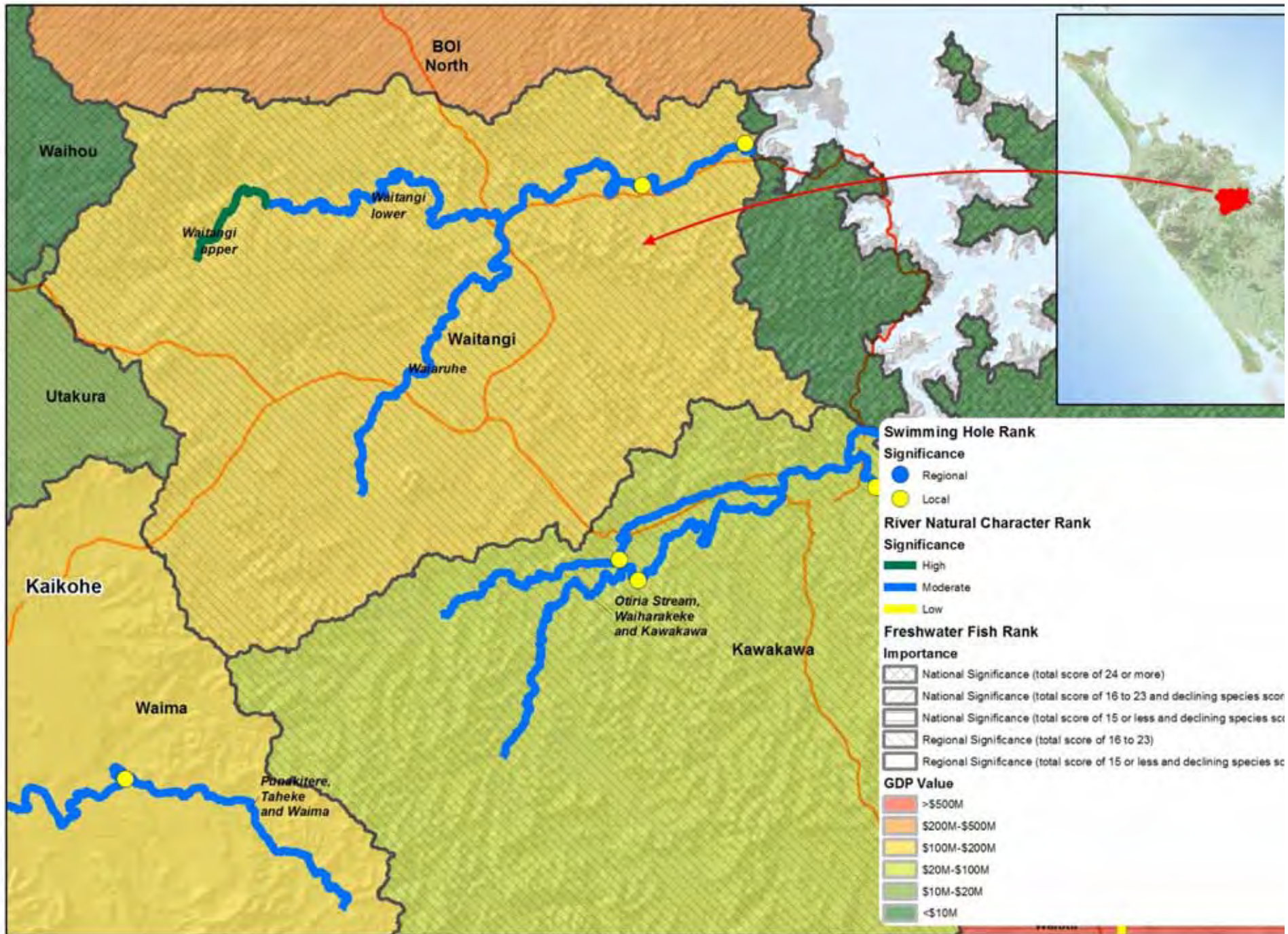
- 57 river units
- 10 – high
- 34 – moderate
- 13 – low
- High in upper reaches often in DoC land
- Low in lowland area, intensive agriculture and modification



# Economic assessment

- GDP value to each consented take and stock use in 1,400 catchments
- Grouped according to 27 native fish
- 2 – >\$500M
- 5 – \$100-\$500M
- 9 – \$10-\$100M
- 11 – <\$10M





# What's next?

- Provide the results to catchment stakeholder groups as part of the information for assessing uses and values
- Upload reports on Waiora Northland homepage
- Investigate the application of RiVAS at a catchment scale
- Look into developing a RiVAS agricultural production assessment



# Thank you

**Darryl Jones**

Economist



**09 470 1247**



**darrylj@nrc.govt.nz**



**www.nrc.govt.nz**



**Follow us on  
Twitter**

[Twitter.com/NRCexpress](https://twitter.com/NRCexpress)

Putting Northland first

**NORTHLAND  
REGIONAL  
COUNCIL** 

# Stay connected



**0800 002 004**



**[www.nrc.govt.nz](http://www.nrc.govt.nz)**



**24/7 Environmental Hotline**  
**0800 504 639**



Putting Northland first

**NORTHLAND  
REGIONAL  
COUNCIL** 