

## Northland Regional Council Minutes

Meeting held in the Council Chamber  
36 Water Street, Whangārei  
on Thursday 21 June 2018, commencing at 10.30am

### Present:

Chairman, Bill Shepherd  
Deputy Chairman, David Sinclair  
Councillors:  
John Bain  
Justin Blaikie  
Paul Dimery  
Mike Finlayson  
Penny Smart  
Rick Stolwerk  
Joce Yeoman

### In Attendance:

#### Full Meeting

NRC Chief Executive  
GM - Governance and Engagement  
GM - Corporate Excellence  
PA Corporate Excellence  
Governance Support Officer

#### Part Meeting

NINC Chair  
NINC Chief Executive Officer  
NINC Directors (x3)  
NINC GM Investment and Infrastructure  
Independent Financial Advisor  
GM - Customer Service - Community Resilience  
GM - Environmental Services  
GM - Regulatory Services  
Strategy Specialist  
Management Accountant  
Economist  
Biosecurity Manager  
Biosecurity Specialist  
Property Officer  
Strategic Projects Manager  
Finance Manager  
Financial Accountant

The Chair declared the meeting open at 10.30am.

## **Apologies (Item 1.0)**

**Moved (Sinclair/  
Yeoman)**

That the apologies from the Independent Financial Advisor and GM Regulatory Services for delayed arrival be received.

**Carried**

## **Receipt of Supplementary Item (Item 2.0A)**

**ID: A1076941**

**Report from Dave Tams, Group Manager, Corporate Excellence**

**Moved (Shepherd/Sinclair)**

That as permitted under section 46A(7) of the Local Government Official Information and Meetings Act 1987 the following supplementary report be received:

- ITEM 6.6: 'Adoption of rating policies pertaining to the Kaipara and Whangārei districts' by Bree Torkington, Assistant Management Accountant

**Carried**

## **Declarations of Conflicts of Interest (Item 3.0)**

It was advised that councillors should make declarations item-by-item as the meeting progressed.

## **Health and Safety Report (Item 3.0)**

**ID: A1073637**

**Report from Tracey Warboys, Health and Safety Specialist**

**Moved (Stolwerk/Yeoman)**

That the report 'Health and Safety Report' by Tracey Warboys, Health and Safety Specialist and dated 7 June 2018, be received.

**Carried**

## **Confirmation of Minutes - 15 May 2018 (Item 4.1)**

**ID: A1071567**

**Report from Chris Taylor, Governance Support Manager**

**Moved (Yeoman/Sinclair)**

That the minutes of the council meeting held on 15 May 2018 be confirmed as a true and correct record.

**Carried**

### **Receipt of Action Sheet (Item 4.2)**

**ID: A1073496**

**Report from Chris Taylor, Governance Support Manager**

**Moved (Stolwerk/Finlayson)**

That the action sheet be received.

**Carried**

### **Council Working Party Updates and Chairpersons' Briefings (Item 4.3)**

**ID: A1059886**

**Report from Sally Bowron, Strategy and Governance Team Admin/PA**

**Moved (Sinclair/Blaikie)**

That the report 'Council Working Party Updates and Chairpersons' Briefings' be received.

**Carried**

### **Council Working Group Updates (Item 4.4)**

**ID: A1073942**

**Report from Nola Sooner, Land and Rivers Team Administrator/PA**

**Moved (Yeoman/Finlayson)**

That the report 'Council Working Group Updates' be received.

**Carried**

### **Financial Report to 31 May 2018 (Item 5.1)**

**ID: A1073269**

**Report from Vincent McColl, Financial Accountant**

**Moved (Sinclair/Blaikie)**

That the report 'Financial Report to 31 May 2018' by Vincent McColl, Financial Accountant and dated 6 June 2018, be received.

**Carried**

### **2018 Representation Arrangements Review Initial Proposal (Item 6.1)**

**ID: A1066262**

**Report from Chris Taylor, Governance Support Manager**

**Moved (Shepherd/Sinclair)**

1. That the report '2018 Representation Arrangements Review Initial Proposal' by Chris Taylor, Governance Support Manager and dated 14 May 2018, be received.

**Carried**

**It was further moved (Bain/Finlayson)**

Option 2:

2. That in accordance with section 19I of the Local Electoral Act 2001, the 2018 Northland Regional Council Representation Arrangement Review **Option 2** proposes that:
  - a) The Northland Regional Council comprises nine (9) councillors elected from seven (7) constituencies.
  - b) The proposed names and boundaries of the seven (7) constituencies be as described and illustrated in the Initial Proposal included as **Attachment 2** (pertaining to Item 6.1 of the 21 June 2018 council agenda).
  - c) The proposed number of members to be elected by the electors of each constituency be as follows:
    - i. One (1) member to be elected by the electors of each of the following constituencies: Te Hiku, Hokianga-Kaikohe, Coastal Central, Coastal South and Kaipara;
    - ii. Two (2) members to be elected by the electors of the Coastal North and Whangārei Urban constituencies.
  - d) That the reasons for the changes to the representation arrangements for the Northland region described in the Initial Proposal included as **Attachment 2** are:
    - i. To better reflect regional communities of interest;
    - ii. To improve effective representation;
    - iii. With the exception of the Hokianga-Kaikohe constituency, in determining the number of councillors to be elected by the electors of each constituency the changes being proposed satisfy section 19V of the LEA 2001, which provides for fair representation.
    - iv. The Hokianga-Kaikohe constituency does not comply with section 19V of the LEA 2002 in order to maintain effective representation for an isolated community.
  - e) The Initial Representation Arrangements Proposal included as **Attachment 2** to this report, be adopted and submitted for formal public consultation in accordance with the requirements of the Local Electoral Act 2001, and that the CEO be authorised to make any changes to the proposal arising from its final editing.
  - f) The Representation Arrangements Review Hearings Committee be a committee of all councillors.

**Carried**

**It was further moved (Dimery/Finlayson)**

3. Due to the tight timeframes of the Representation Arrangements Review, late submissions will not be accepted.

**Carried**

**Adoption of the Long Term Plan 2018-2028, Revenue and Financing Policy, Financial Contributions Policy, Significance and Engagement Policy, Financial Strategy and Infrastructure Strategy (Item 6.2)**

**ID: A1069493**

**Report from Malcolm Nicolson, Chief Executive Officer**

**Moved (Stolwerk/Yeoman)**

1. That the report 'Adoption of the Long Term Plan 2018-2028, Revenue and Financing Policy, Financial Contributions Policy, Significance and Engagement Policy, Financial

Strategy and Infrastructure Strategy' by Malcolm Nicolson, Chief Executive Officer and dated 23 May 2018, be received.

2. That having undertaken consultation in accordance with sections 82 and 82A by way of the Special Consultative Procedure in accordance with section 87, and pursuant to section 76AA of the Local Government Act 2002, the council adopt the Significance and Engagement Policy (as included in the final draft Long Term Plan 2018–2028, attached under separate cover).
3. That in accordance with the requirements of sections 101A and 101B of the Local Government Act 2002, the council adopts the Financial Strategy and Infrastructure Strategy as included in the final draft Long Term Plan 2018–2028 (attached under separate cover).
4. That, having undertaken consultation in accordance with the Special Consultative Procedure, and pursuant to section 93 of the Local Government Act 2002, the council adopts as its Long Term Plan 2018–2028 the final draft Long Term Plan 2018–2028 (attached under separate cover).
5. That having undertaken consultation in accordance with sections 82 and 82A, and pursuant to section 102 of the Local Government Act 2002, the council adopt the following policies (as included in the final draft Long Term Plan 2018–2028, attached under separate cover):
  - a. Revenue and Financing Policy; and
  - b. Financial Contributions Policy.
6. That council delegate to the Group Manager – Governance and Engagement the authority to approve any minor accuracy, grammatical, typographical or formatting amendments to the Long Term Plan 2018–2028 prior to it being published.

**Carried**

*Secretarial Note: Congratulations and appreciation were extended to all staff involved in the Long Term Plan process.*

## **Adoption of the Charging Policy 2018/19 (Item 6.3)**

**ID: A1066433**

**Report from Kyla Carlier, Strategy Specialist**

**Moved (Sinclair/Yeoman)**

1. That the report 'Adoption of the Charging Policy 2018/19' by Kyla Carlier, Strategy Specialist and dated 14 May 2018, be received.
2. That council adopts the Charging Policy 2018/19 as included in the supporting information to this report.
3. That council authorises Jonathan Gibbard, Group Manager –Governance and engagement to make any necessary minor drafting, typographical, rounding, or presentation corrections to the Charging Policy 2018/19 prior to the document going to print.

**Carried**

## Rating Considerations Under Section 100T of the Biosecurity Act 1993 (Item 6.4)

ID: A1069926

Report from Don McKenzie, Biosecurity Manager

Moved (Blaikie/Smart)

1. That the report 'Rating Considerations Under Section 100T of the Biosecurity Act 1993' by Don McKenzie, Biosecurity Manager and dated 24 May 2018, be received.
2. That council adopts the section 100T analysis for the purpose of setting the Pest Management Rate, as set out in the Funding Impact Statement of the Long Term Plan 2018–2028.

Carried

## Rates for the year 1 July 2018 to 30 June 2019 (Item 6.5)

ID: A1063680

Report from Dave Tams, Group Manager, Corporate Excellence

Moved (Stolwerk/Yeoman)

1. That the report 'Rates for the year 1 July 2018 to 30 June 2019' by Dave Tams, Group Manager, Corporate Excellence and dated 7 May 2018, be received.
2. That the Northland Regional Council resolves to set the following rates under the Local Government (Rating) Act 2002 (LGRA) for the financial year commencing 1 July 2018 and ending 30 June 2019:

### a. Targeted council services rate

A targeted rate as authorised by the LGRA. The rate is calculated on the total projected capital value, as determined by the certificate of projected valuation of each constituent district in the Northland region. An additional \$1.73 (including GST) per each rateable separately used or inhabited part (SUIP) of a rating unit is to be assessed across the Whangārei constituency to provide funding for the ongoing maintenance of the Hātea River Channel. The rate is differentiated by location in the Northland region and assessed as a fixed amount per each rateable separately used or inhabited part (SUIP) of a rating unit in the Far North and Whangārei districts, and on each rateable rating unit (RU) in the Kaipara district. The rate is set as follows:

	<u>Including GST</u>
Far North District	\$73.20 per SUIP
Kaipara District	\$94.86 per RU
Whangārei District	\$91.96 per SUIP

The Whangārei District targeted council services rate amount of \$91.96 (including GST) per SUIP **includes** funding for the Hātea River Channel amount of \$1.73 (including GST).

### b. Targeted land management rate

A targeted rate as authorised by the LGRA. The rate is assessed on the land value of each rateable rating unit in the region. The rate is set per dollar of land value. The rate per dollar of land value is different for each constituent district because the rate is allocated based on projected land value, as provided for in section 131 of the LGRA. The rate is set as follows:

**Including GST**

Far North District	\$0.0001067 per dollar of land value
Kaipara District	\$0.0000932 per dollar of land value
Whangārei District	\$0.0001197 per dollar of land value

**c. Targeted freshwater management rate**

A targeted rate as authorised by the LGRA. The rate is assessed on the land value of each rateable rating unit in the region. The rate is set per dollar of land value. The rate per dollar of land value is different for each constituent district because the rate is allocated based on projected land value, as provided for in section 131 of the LGRA. The rate is set as follows:

**Including GST**

Far North District	\$0.0002247 per dollar of land value
Kaipara District	\$0.0001964 per dollar of land value
Whangārei District	\$0.0002521 per dollar of land value

**d. Targeted pest management rate**

A targeted rate as authorised by the LGRA. The rate is calculated on the total projected capital value, as determined by the certificate of projected valuation of each constituent district in the Northland region. The rate is a fixed amount, differentiated by location in the Northland region. The rate will be assessed on each rateable separately used or inhabited part (SUIP) of a rating unit in the Far North and Whangārei districts and each rateable rating unit (RU) in the Kaipara District. The rate is set as follows:

**Including GST**

Far North District	\$45.08 per SUIP
Kaipara District	\$58.42 per RU
Whangārei District	\$55.57 per SUIP

**e. Targeted flood infrastructure rate**

A targeted rate as authorised by the LGRA. The rate is a fixed amount assessed on each rateable separately used or inhabited part (SUIP) of a rating unit in the Far North and Whangārei districts and each rateable rating unit (RU) in the Kaipara District. The rate is set as follows:

**Including GST**

Far North District	\$25.16 per SUIP
Kaipara District	\$25.16 per RU
Whangārei District	\$25.16 per SUIP

**f. Targeted civil defence and hazard management rate**

A targeted rate as authorised by the LGRA. The rate is calculated on the total projected capital value, as determined by the certificate of projected valuation of each constituent district in the Northland region. The rate is a fixed amount, differentiated by location in the Northland region. The rate will be assessed on each rateable separately used or inhabited

part (SUIP) of a rating unit in the Far North and Whangārei districts and each rateable rating unit (RU) in the Kaipara District. The rate is set as follows:

	<u>Including GST</u>
Far North District	\$15.57 per SUIP
Kaipara District	\$20.18 per RU
Whangārei District	\$19.19 per SUIP

**g. Targeted emergency services rate**

A targeted rate as authorised by the LGRA. The rate is a fixed amount assessed on each rateable separately used or inhabited part (SUIP) of a rating unit in the Far North and Whangārei districts and each rateable rating unit (RU) in the Kaipara District. The rate is set as follows:

	<u>Including GST</u>
Far North District	\$12.06 per SUIP
Kaipara District	\$12.06 per RU
Whangārei District	\$12.06 per SUIP

**h. Targeted regional sporting facilities rate**

A targeted rate as authorised by the LGRA. The rate is a fixed amount assessed on each rateable separately used or inhabited part (SUIP) of a rating unit in the Far North and Whangārei districts and each rateable rating unit (RU) in the Kaipara District. The rate is set as follows:

	<u>Including GST</u>
Far North District	\$17.25 per SUIP
Kaipara District	\$17.25 per RU
Whangārei District	\$17.25 per SUIP

**i. Targeted regional infrastructure rate**

A targeted rate as authorised by the LGRA. This rate is assessed on the land value of each rateable rating unit in the region. The rate is set per dollar of land value. The rate per dollar of land value is different for each constituent district, because the rate is allocated based on projected land value, as provided for in section 131 of the LGRA. The rate is set as follows:

	<u>Including GST</u>
Far North District	\$0.0000317 per dollar of land value
Kaipara District	\$0.0000277 per dollar of land value
Whangārei District	\$0.0000355 per dollar of land value

**j. Targeted Whangārei transport rate**

A targeted rate as authorised by the LGRA. The rate is a fixed amount assessed on each rateable separately used or inhabited part of a rating unit (SUIP) in the Whangārei District. The rate is set as follows:

Including GST



Whangārei District

\$23.66 per SUIP

**k. Targeted Far North transport rate**

A targeted rate as authorised by the LGRA. The rate is a fixed amount assessed on each rateable separately used or inhabited part of a rating unit (SUIP) in the Far North District. The rate is set as follows:

	<u>Including GST</u>
Far North District	\$8.86 per SUIP

**l. Targeted Awanui River management rate**

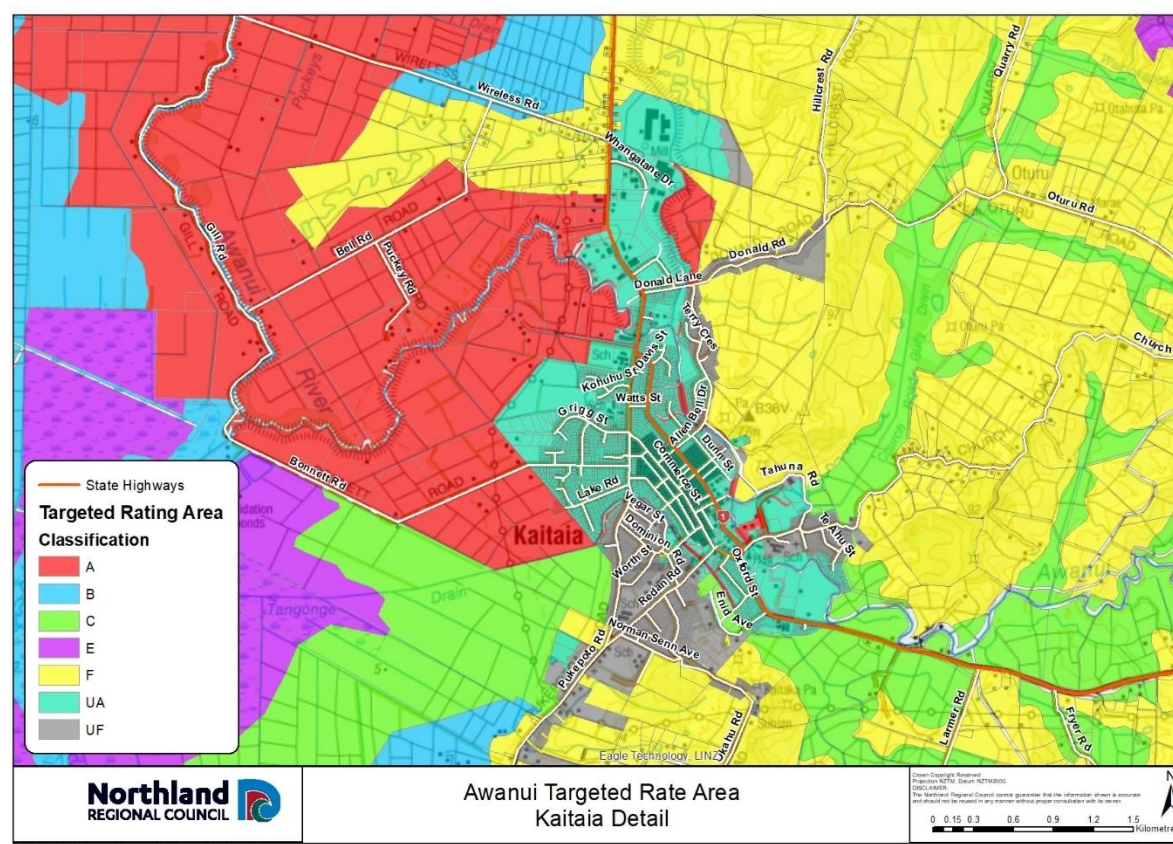
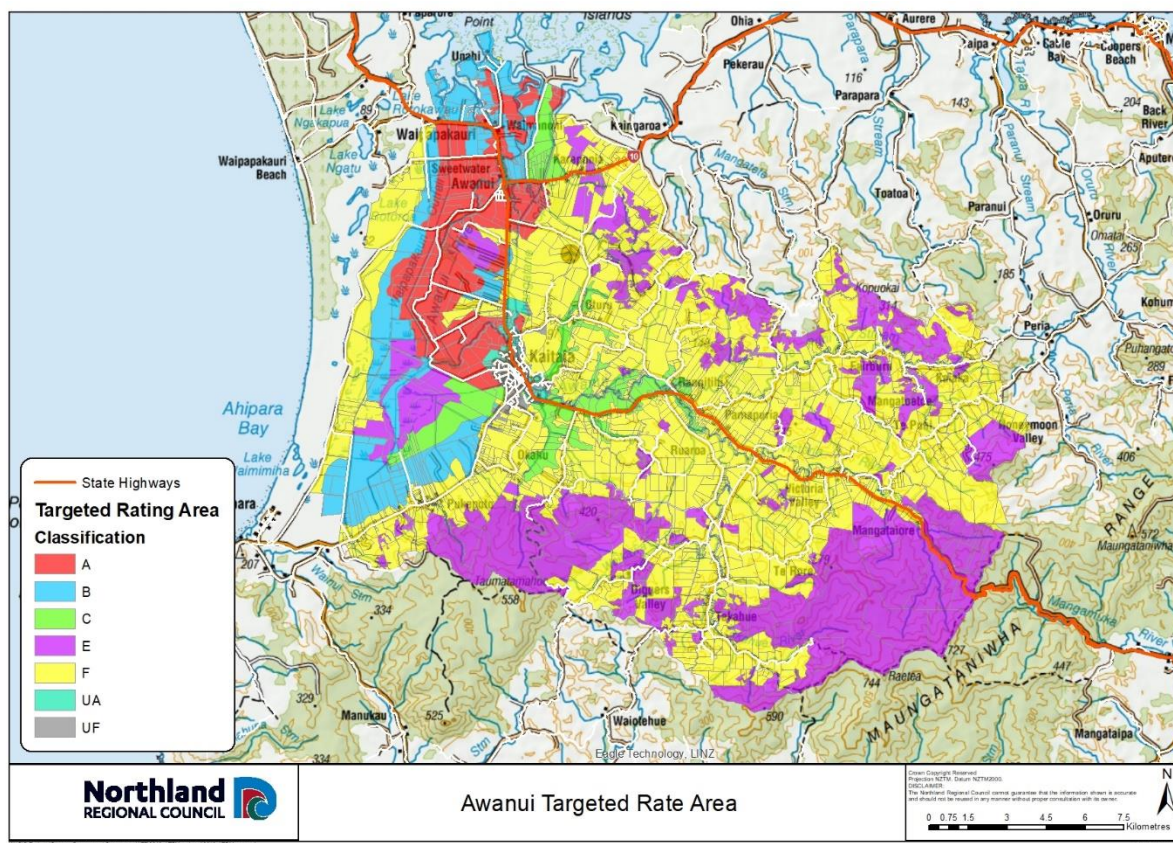
A targeted rate set under the LGRA, set differentially by location and area of benefit as defined in the Awanui River Flood Management Plan, and as defined in the following table:

The rate is set differentially as follows:

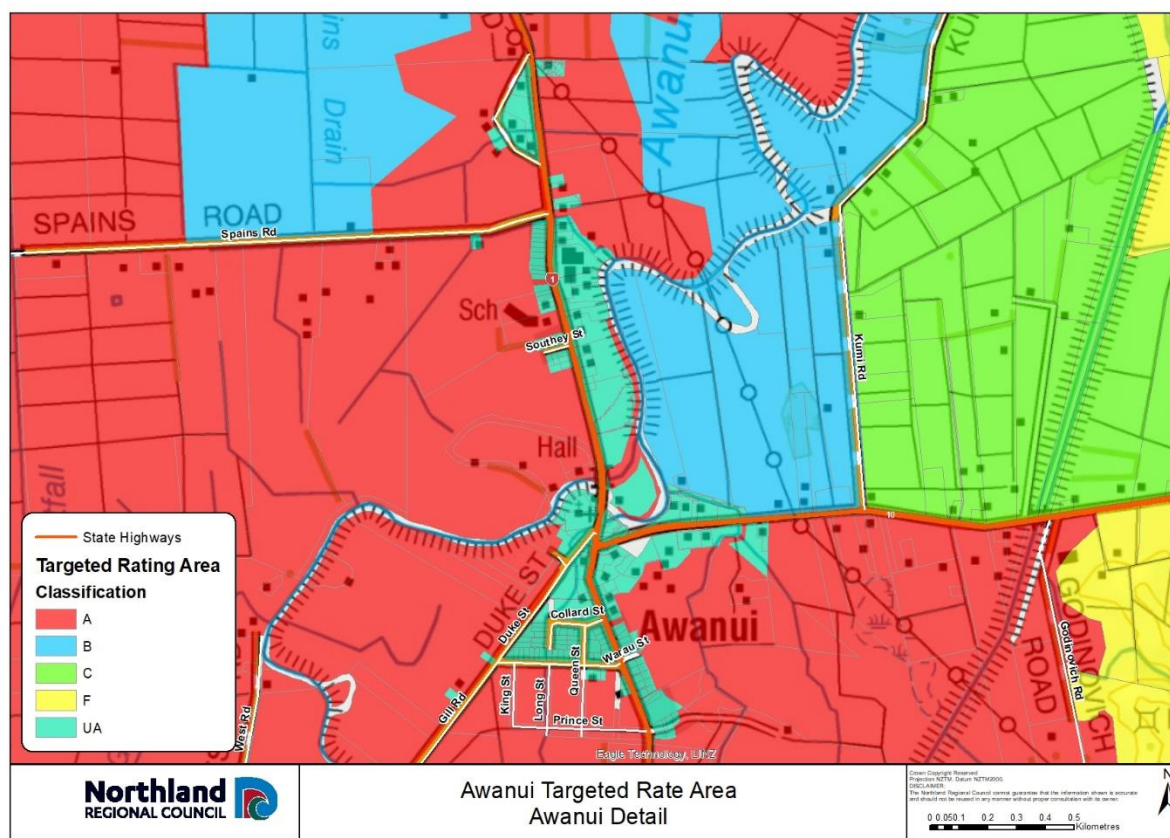
Category	Description	Rate <u>including GST</u>
UA	Urban rate class UA (floodplain location) \$298.11 direct benefit plus \$30.17 indirect benefit per separately used or inhabited part of a rating unit (SUIP).	\$328.28 per SUIP
UA	Urban rate class UA – commercial differential.	\$984.83 per SUIP
UF	Urban rate classes UF (higher ground) \$30.17 direct benefit plus \$30.17 indirect benefit per separately used or inhabited part of a rating unit.	\$60.34 per SUIP
UF	Urban rate class UF – commercial differential.	\$181.02 per SUIP
Rural	Rural rate differentiated by class, \$13.50 per separately used or inhabited part of a rating unit (SUIP) of indirect benefit plus a rate per hectare for each of the following classes of land in the defined Kaitāia flood rating district as illustrated in the following maps and table.	\$13.50 per SUIP

Class	Description	Rate <u>including GST</u>
A & B	High benefit; rural land which receives high benefit from the Awanui scheme works due to reduced river flooding risk and/or reduced duration of flooding and/or coastal flooding – all rateable land other than in the commercial differential.	\$24.43 per hectare
A & B commercial differential		\$73.29 per hectare
C	Moderate benefit; land floods less frequently and water clears quickly – all rateable land other than in the commercial differential.	\$11.07 per hectare
C commercial differential		\$33.21 per hectare
F	Contributes runoff waters, and increases the need for flood protection - all rateable land other than in the commercial differential.	\$1.22 per hectare
F commercial differential		\$3.66 per hectare

The rating classifications are illustrated in the following maps:





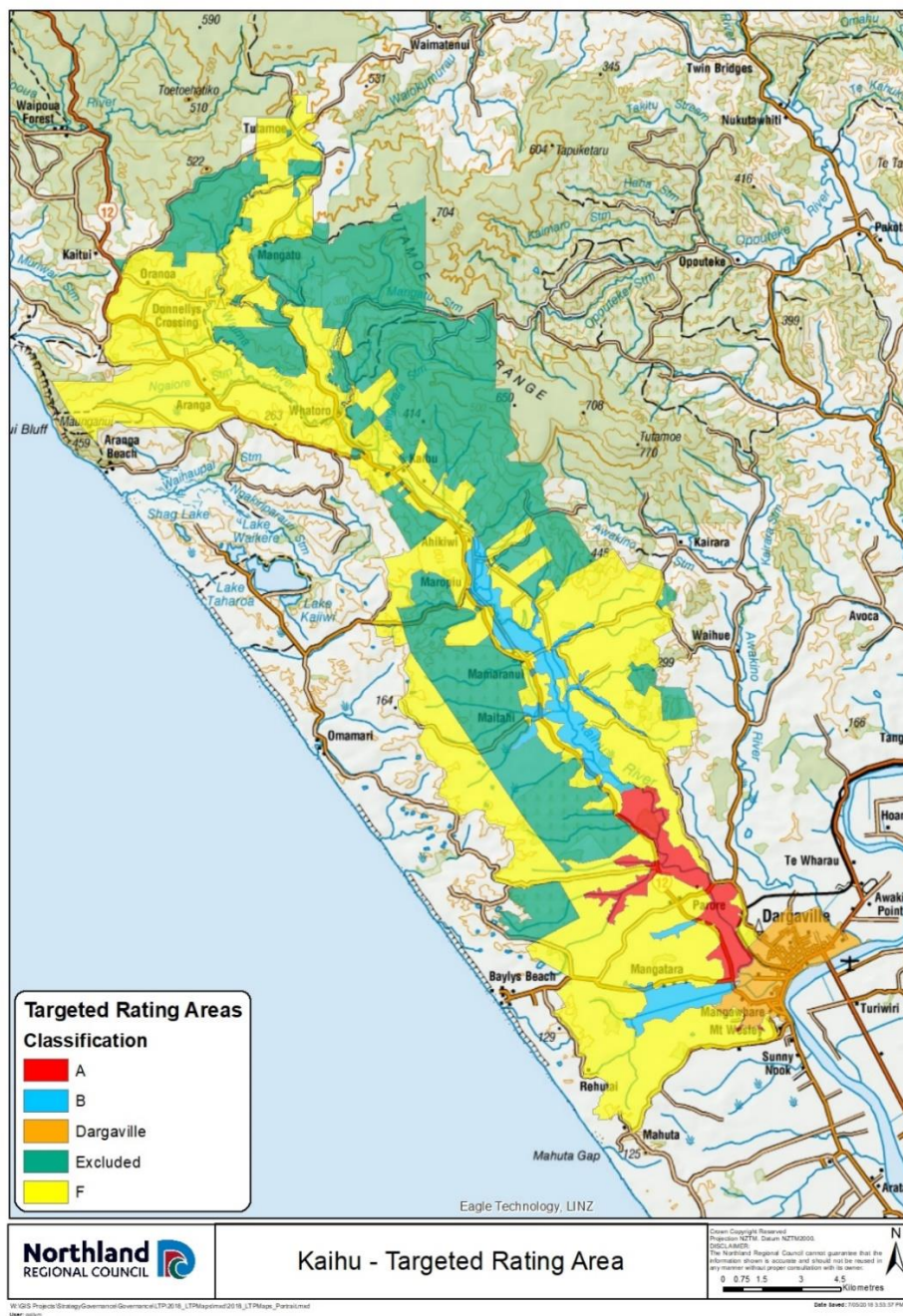


**m. Targeted Kaihū River management rate**

A targeted rate set under the LGRA, and set differentially by location and area of benefit as defined in the following table:

Class	Description	Rate Including GST
A	Land on the floodplain and side valleys downstream of Rotu Bottleneck.	\$21.22 per hectare
B	Class B – land on the floodplain and tributary side valleys between Ahikiwi and the Rotu Bottleneck and in the Mangatara Drain catchment upstream of SH12.	\$11.68 per hectare
F	Land within the Kaihū River rating area not falling within Class A and Class B.	\$1.65 per hectare
<b>Urban Contribution</b> – A contribution from the Kaipara District Council instead of a separate rate per property:		\$5015 per annum

The rating classifications are illustrated in the following map:

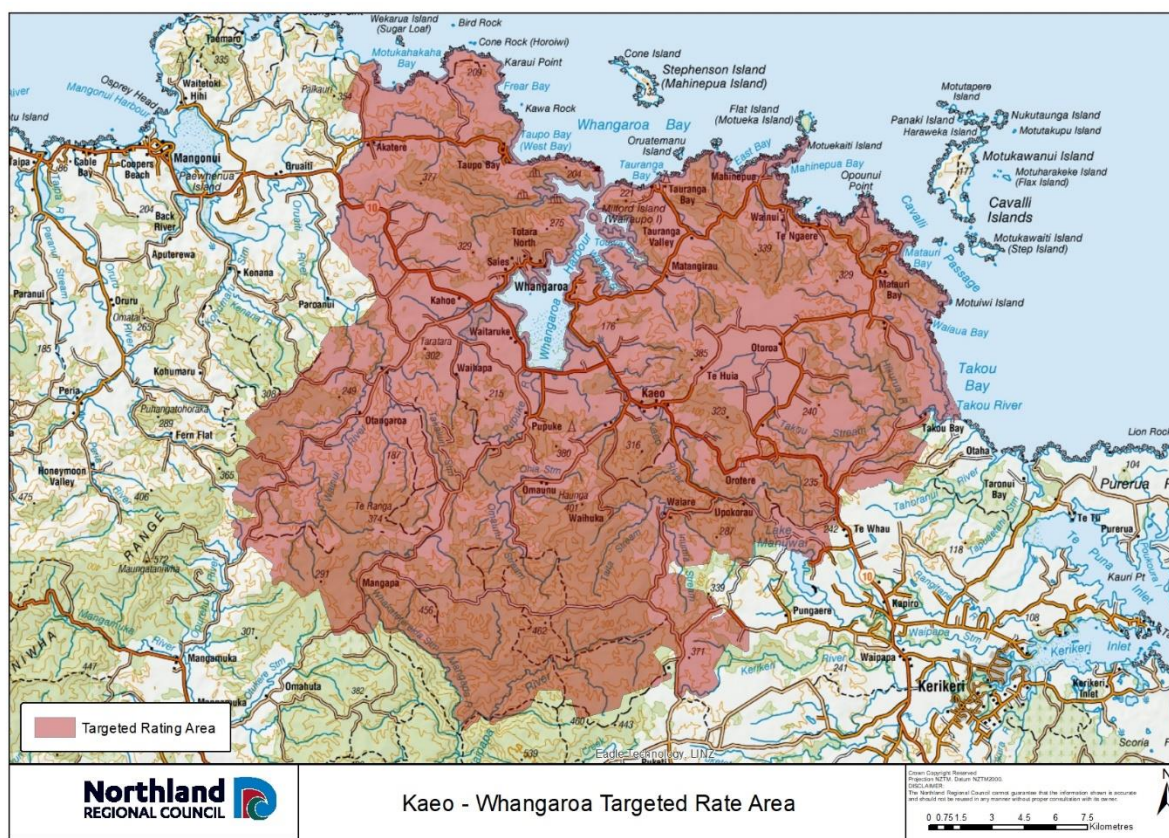


**n. Targeted Kaeo-Whangaroa rivers management rate**

A targeted rate set under the LGRA, set on a uniform basis in respect of each rateable separately used or inhabited part of a rating unit falling within the former Whangaroa Ward rating rolls of 100-199, as illustrated in the map below:

	<u>Including GST</u>
Former Whangaroa Ward	\$53.86 per SU1P

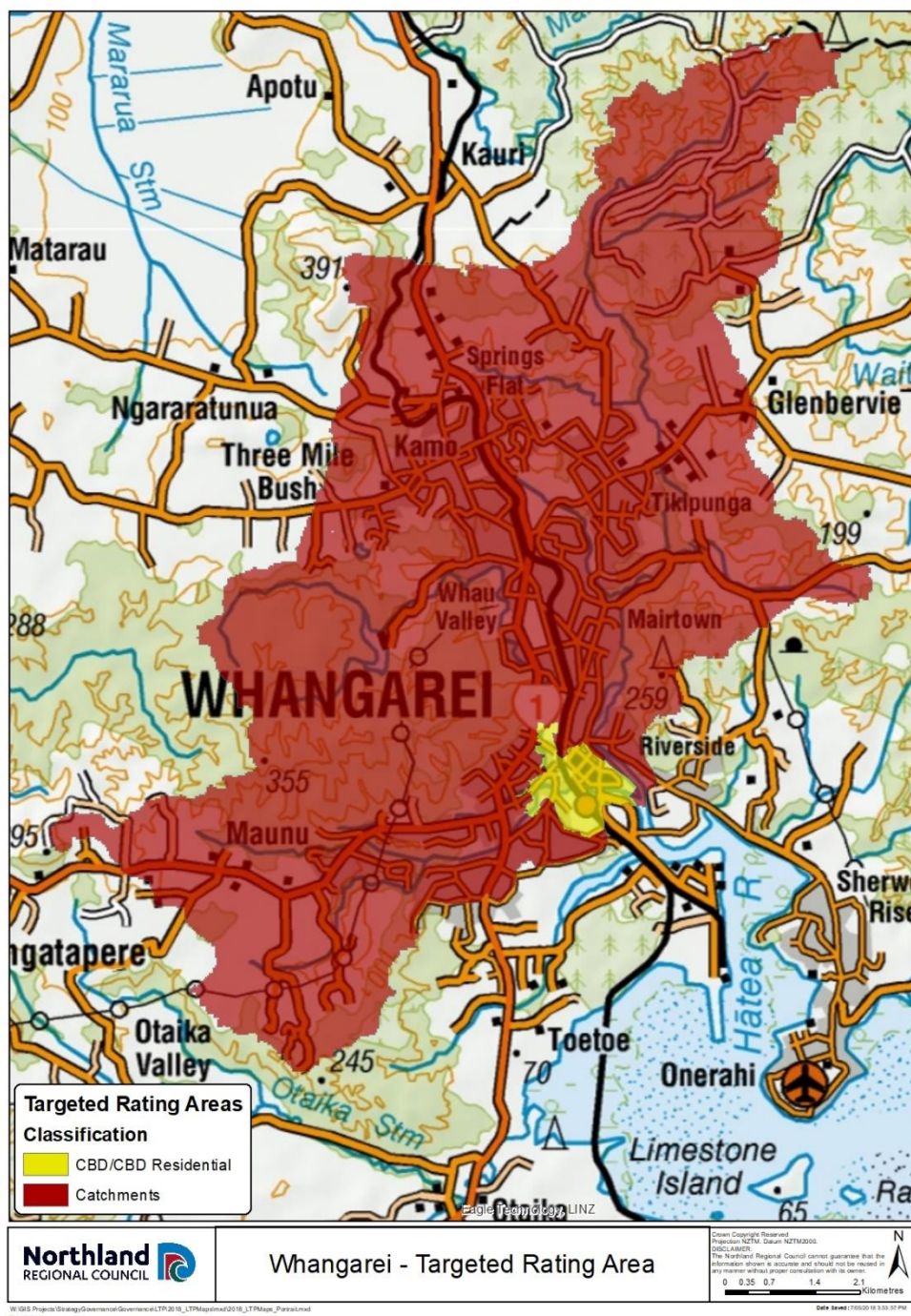




#### o. Targeted Whangārei urban rivers management rate

A targeted rate set under the LGRA, and assessed on all rateable properties defined by reference to the differential categories, and differentiated by location (illustrated in the map below) and, for some categories, land use. It is set as a fixed amount per each rateable separately used or inhabited part (SUIP) of a rating unit, as follows:

Category	Including GST
1 Commercial properties located in the Whangārei Central Business District flood area:	\$350.61 per SUIP
2 Residential properties located in the Whangārei Central Business District flood area:	\$136.40 per SUIP
3 Properties located in the contributing water catchment area (including properties falling in the Waiarohia, Raumanga, Kirikiri and Hātea River Catchments):	\$44.29 per SUIP



Differential categories for the Whangārei urban rivers management rate:

<p><b>Residential properties in the Whangārei central business district</b></p>	<p>Residential properties in the Whangārei central business district (CBD) flood area are defined as all rating units which are used principally for residential or lifestyle residential purposes, including retirement villages, flats etc.</p> <p>Residential properties also includes multi-unit properties, these being all separate rating units used principally for residential purposes, and on which is situated multi-unit type residential accommodation that is used principally for temporary or permanent residential accommodation and for financial reward, including, but not limited to, hotels, boarding houses, motels, tourist accommodation, residential clubs and hostels but excluding</p>
---	---



	any properties that are licensed under the Sale and Supply of Alcohol Act 2012.
<b>Commercial properties in the Whangārei central business district</b>	Commercial properties in the Whangārei CBD flood area are all separate rating units used principally for commercial, industrial or related purposes or zoned for commercial, industrial or related purposes in accordance with the Whangārei district plan. For the avoidance of doubt, this category includes properties licensed under the Sale and Supply of Alcohol 2012; and private hospitals and private medical centres.

### 3. Payment dates for rates, discounts, and penalty regime

That the Northland Regional Council resolves the following:

#### **Far North District constituency:**

All rates within the Far North District constituency are payable in four equal instalments, on the following dates:

<b>Instalment</b>	<b>Due date for payment</b>
Instalment 1	20 August 2018
Instalment 2	20 November 2018
Instalment 3	20 February 2019
Instalment 4	20 May 2019

The Northland Regional Council resolves to add the following penalties to unpaid Far North District constituency rates:

- In accordance with section 58(1)(a) of the LGRA, a penalty of ten percent (10%) will be added to any portion of each instalment of Far North District constituency rates assessed in the 2018/19 financial year that is unpaid on or by the respective due date for payment as stated above. These penalties will be added on the following dates:

<b>Instalment</b>	<b>Date penalty will be added</b>
Instalment 1	27 August 2018
Instalment 2	27 November 2018
Instalment 3	27 February 2019
Instalment 4	27 May 2019

#### **Kaipara District constituency:**

All rates within the Kaipara District constituency are payable in four equal instalments, on the following dates:

Instalment	Due date for payment
Instalment 1	20 August 2018
Instalment 2	20 November 2018
Instalment 3	20 February 2019
Instalment 4	20 May 2019

The Northland Regional Council resolves to add the following penalties to unpaid Kaipara District constituency rates:

- In accordance with section 58(1) (a) of the LGRA, a penalty of ten percent (10%) of so much of each instalment of the Kaipara District constituency rates assessed in the 2018/19 financial year that are unpaid after the relevant due date for each instalment will be added on the relevant penalty date for each instalment stated below, except where a ratepayer has entered into an arrangement by way of direct debit authority, or an automatic payment authority, and honours that arrangement. These penalties will be added on the following dates:

Instalment	Date penalty will be added
Instalment 1	21 August 2018
Instalment 2	21 November 2018
Instalment 3	21 February 2019
Instalment 4	21 May 2019

- In accordance with section 58(1)(b) of the LGRA, a penalty of ten per cent (10%) of the amount of all Kaipara District constituency rates (including any penalties) from any previous financial years that are unpaid on 01 July 2018 will be added on 05 July 2018.
- In accordance with section 58(1)(c) of the LGRA, a penalty of ten per cent (10%) of the amount of all Kaipara District constituency rates to which a penalty has been added under the point immediately above and which remain unpaid will be added on 05 January 2019.

**Whangārei District constituency:**

All rates within the Whangārei District constituency are payable in four equal instalments, on the following dates:

Instalment	Due date for payment
Instalment 1	20 August 2018
Instalment 2	20 November 2018
Instalment 3	20 February 2019
Instalment 4	20 May 2019

The Northland Regional Council resolves to add the following penalties to unpaid Whangārei District constituency rates:

- In accordance with section 58(1)(a) of the LGA, a penalty of ten percent (10%) will be added to any portion of each instalment of Whangārei District constituency rates



assessed in the 2018/19 financial year that is unpaid on or by the respective due date for payment as stated above. These penalties will be added on the following dates:

Instalment	Date penalty will be added
Instalment 1	23 August 2018
Instalment 2	23 November 2018
Instalment 3	25 February 2019
Instalment 4	23 May 2019

- In accordance with section 58(1)(b) of the LGRA, a penalty of ten per cent (10%) will be added to any Whangārei District constituency rates (including any penalties) from any financial year prior to 1 July 2018 that still remain unpaid as at 01 July 2018. This penalty will be added on 3 September 2018.

The Northland Regional Council resolves to apply the following discount to Whangārei District constituency rates:

- In accordance with section 55(3) of the LGRA, where the total rates assessed for the 2018/19 year and any arrears on a rating unit in the Whangārei District constituency are paid in full on or by the due date of the first instalment, a discount of two percent (2%) of the total rates assessed on that rating unit in the 2018/19 financial year will be applied.

**Carried**

## **Adoption of rating policies pertaining to the Kaipara and Whangārei districts (Supplementary Item 6.6)**

**ID: A1071515**

**Report from Bree Torkington, Assistant Management Accountant**

**Moved (Yeoman/Stolwerk)**

1. That the report 'Adoption of rating policies effective 1 July 2018' by Bree Torkington, Assistant Management Accountant and dated 30 May 2018, be received.

**Carried**

**It was further moved (Yeoman/Stolwerk)**

2. That having undertaken consultation in accordance with sections 82 and 83, and pursuant to section 102 and sections 108-110 of the Local Government Act 2002, and sections 55 and 56 of the Local Government (Rating) Act 2002, and having considered Schedule 11 of the Local Government Act 2002, the council adopt the rating policies for the Kaipara district and Whangārei district (including the Policy on the Remission and Postponement of Rates on Māori Freehold Land), effective from 1 July 2018, included on pages 14-28 of the attachment pertaining to supplementary item 6.6 of the 21 June 2018 council agenda.
3. That council authorise Dave Tams, Group Manager – Corporate Excellence, to make any necessary minor drafting, typographical, or presentation corrections to the rating policies prior to the document going to print.

**Carried**

## **Investment and Growth Reserve: Enabling Investment Allocation - Extended Regional Promotions (Item 6.7)**

**ID: A1073256**

**Report from Darryl Jones, Economist**

**Moved (Sinclair/Stolwerk)**

1. That the report 'Investment and Growth Reserve: Enabling Investment Allocation - Extended Regional Promotions' by Darryl Jones, Economist and dated 6 June 2018, be received.
2. That council agree to allocate \$200,000 in each of the next three financial years (i.e. 2018/19–2020/21) from the Investment and Growth Reserve to Northland Inc. to undertake regional promotion activities.
3. That council delegates to the Chief Executive Officer the arrangements for allocating of the funding.
4. That Northland Inc. provide council with six-monthly reporting to council on performance measures set out in the proposal.

**Carried**

*Secretarial Note: Items 6.8 and 7.3 were addressed following Item 8.0 to allow for the attendance of Northland Inc. Limited representatives.*

## **Northland Inc. Limited: Statement of Intent 2018-2021 (Item 6.8)**

**ID: A1072819**

**Report from Darryl Jones, Economist**

**Moved (Sinclair/Stolwerk)**

1. That the report 'Northland Inc. Limited: Statement of Intent 2018-2021' by Darryl Jones, Economist and dated 5 June 2018, be received.
2. That council agree to Northland Inc. Limited's Statement of Intent 2018–2021 as set out in **Attachment 2** pertaining to Item 6.8 of the 21 June 2018 council agenda.

**Carried**

## **Making of section 8 (Disease and pathogens) and section 10.1 (Marine Pathway Management Plan) of the Northland Regional Pest and Marine Pathway Management Plan 2017-2027 (Item 6.9)**

**ID: A1073766**

**Report from Don McKenzie, Biosecurity Manager**

**Moved (Stolwerk/Finlayson)**

1. That the report 'Making of section 8 (Disease and pathogens) and section 10.1 (Marine Pathway Management Plan) of the Northland Regional Pest and Marine Pathway Management Plan 2017-2027' by Don McKenzie, Biosecurity Manager and dated 7 June 2018, be received.
2. That council make section 8 (Disease and pathogens) of the Northland Regional Pest and Marine Pathway Management Plan 2017–2027 in accordance with section 77(1) of

the Biosecurity Act 1993 by fixing the council seal to section 8 (Disease and pathogens) of the Northland Regional Pest and Marine Pathway Management Plan 2017–2027 as attached to the report to council ‘Making of section 8 (Disease and pathogens) and section 10.1 (Marine Pathway Management Plan) of the Northland Regional Pest and Marine Pathway Management Plan 2017–2027’ dated 29 May 2018.

3. That council make section 10.1 (Marine Pathway Management Plan) of the Northland Regional Pest and Marine Pathway Management Plan 2017–2027 in accordance with section 97(1) of the Biosecurity Act 1993 by fixing the council seal to section 10.1 (Marine Pathway Management Plan) of the Northland Regional Pest and Marine Pathway Management Plan 2017–2027 as attached to the report to council ‘Making of section 8 (Disease and pathogens) and section 10.1 (Marine Pathway Management Plan) of the Northland Regional Pest and Marine Pathway Management Plan 2017–2027’ dated 29 May 2018.
4. That 1 July 2018 is the date section 8 (Disease and pathogens) of the Northland Regional Pest and Marine Pathway Management Plan 2017–2027 commences in accordance with sections 77(5) and 97(5) of the Biosecurity Act 1993.
5. That 1 July 2018 is the date section 10.1 (Marine Pathway Management Plan) of the Northland Regional Pest and Marine Pathway Management Plan 2017–2027 commences in accordance with sections 77(5) and 97(5) of the Biosecurity Act 1993.
6. That Bruce Howse, Group Manager – Environmental Services, be delegated authority to make minor grammatical or formatting amendments to section 8 (Disease and pathogens) and section 10.1 (Marine Pathway Management Plan) of the Northland Regional Pest and Marine Pathway Management Plan 2017–2027 as necessary prior to the date of commencement as per section 100G(4) of the Biosecurity Act 1993.

**Carried**

## **Amendment to the Northland Regional Council/Northland Transportation Procurement Strategy 2017 to 2021 (Item 6.10)**

**ID: A1073353**

**Report from Peter Thomson, Northland Transportation Alliance Manager, and Chris Powell, Transport Manager**

**Moved (Blaikie/Sinclair)**

1. That the report ‘Amendment to the Northland Regional Council/Northland Transportation Alliance Procurement Strategy 2017 to 2021’ by Peter Thomson, Northland Transportation Alliance Manager and Chris Powell, Transport Manager and dated 6 June 2018, be received.
2. That the Northland Regional Council approve the request that the Northland Transportation Alliance make the following changes to the Northland Transportation Alliance Procurement Strategy 2017 to 2021:
  - Reference the fact that whilst the Northland Transportation Alliance Procurement Strategy 2017 to 2021 is the overarching Regional Procurement Strategy, the NRC Public Transport Procurement Strategy is currently a sub strategy, which will expire in June 2018, and not be replaced.

- Change references to 'direct appointment' in Table 5 to be consistent with the wording in the NRC PT procurement strategy ('appropriate supplier selection method').

**Carried**

### **Investment Subcommittee and Property Subcommittee Membership (Item 6.11)**

**ID: A1072173**

**Report from Dave Tams, Group Manager, Corporate Excellence and Phil Heatley, Strategic Projects Manager**

**Moved (Yeoman/Bain)**

1. That the report 'Investment Subcommittee and Property Subcommittee Membership' by Dave Tams, Group Manager, Corporate Excellence and Phil Heatley, Strategic Projects Manager and dated 1 June 2018, be received.
2. That council approves Cr Stolwerk as an alternate member of the Investment Subcommittee.
3. That council approves Cr Stolwerk as an alternate member of the Property Subcommittee.
4. That the Terms of Reference for each respective subcommittee be updated accordingly.

**Carried**

### **Amendment to delegations (Item 6.12)**

**ID: A1073237**

**Report from Justin Murfitt, Resource Management Planning and Policy Manager**

**Moved (Yeoman/Sinclair)**

1. That the report 'Amendment to delegations' by Justin Murfitt, Resource Management Planning and Policy Manager and dated 6 June 2018, be received.
2. That council delegates authority to the Resource Management Planning and Policy Manager and the Group Manager – Regulatory Services to settle appeals by way of mediated agreements where council is an interested party under section 274 of the Resource Management Act 1991.
3. That the Delegations Manual be amended accordingly to reflect recommendation 2 above and to make other minor changes for consistency and clarity.

**Carried**

### **Chair's Report to Council (Item 7.1)**

**ID: A1071176**

**Report from Bill Shepherd, Chairman**

**Moved (Shepherd/Sinclair)**

That the report 'Chair's Report to Council' by Bill Shepherd, Chairman, and dated 1 June 2018, be received.

**Carried**

*Secretarial Note: Councillor Yeoman noted that she had not attended the Karikari estate event and requested that the report be amended accordingly.*

## **Chief Executive's Report to Council (Item 7.2)**

**ID: A1067281**

**Report from Malcolm Nicolson, Chief Executive Officer**

**Moved (Shepherd/Stolwerk)**

That the report 'Chief Executive's Report to Council' by Malcolm Nicolson, Chief Executive Officer and dated 21 June 2018, be received.

**Carried**

*Secretarial Note:*

- *Appreciation was extended to the Biosecurity team for their work on the pest programme.*
- *Items 6.8 and 7.3 were addressed following Item 8.0 to allow for the attendance of Northland Inc. Limited representatives.*

## **Northland Inc. Limited: Reporting Against Statement of Intent - Quarter Three 2017/18 (Item 7.3)**

**ID: A1072767**

**Report from Darryl Jones, Economist**

**Moved (Finlayson/Smart)**

That the report 'Northland Inc. Limited: Reporting Against Statement of Intent - Quarter Three 2017/18' by Darryl Jones, Economist and dated 5 June 2018, be received.

**Carried**

*Secretarial Note: Item 8.0 was address prior to Items 6.8 and 7.3 to allow for the attendance of Northland Inc. Limited representatives.*

## **Receipt of Committee Minutes (Item 8.0)**

**ID: A1072220**

**Report from Chris Taylor, Governance Support Manager**

**Moved (Smart/Dimery)**

That the unconfirmed minutes of the:

- Property Subcommittee – 8 May 2018;
- Investment Subcommittee – 30 May 2018; and
- Regional Transport Committee – 6 June 2018

be received.

**Carried**

## Business with Public Excluded (Item 9.0)

### Moved (Shepherd/Sinclair)

1. That the public be excluded from the proceedings of this meeting to consider confidential matters.
2. That the general subject of the matters to be considered whilst the public is excluded, the reasons for passing this resolution in relation to this matter, and the specific grounds under the Local Government Official Information and Meetings Act 1987 for the passing of this resolution, are as follows:

Item No.	Item Issue	Reasons/Grounds
9.1	Confirmation of Confidential Minutes - 15 May 2018	The public conduct of the proceedings would be likely to result in disclosure of information, as stated in the open section of the meeting.
9.2	Receipt of Confidential Committee Minutes	The public conduct of the proceedings would be likely to result in disclosure of information, as stated in the open section of the meeting.
9.3	Human Resources Report	The public conduct of the proceedings would be likely to result in disclosure of information, the withholding of which is necessary to protect the privacy of natural persons, including that of deceased natural persons s7(2)(a).
9.4	Appointment of Northland Inc. Directors	The public conduct of the proceedings would be likely to result in disclosure of information, the withholding of which is necessary to protect the privacy of natural persons, including that of deceased natural persons s7(2)(a).
9.5	Marsden Point Rail Link Properties	The public conduct of the proceedings would be likely to result in disclosure of information, the withholding of which is necessary to enable council to carry out, without prejudice or disadvantage, commercial activities s7(2)(h) and the withholding of which is necessary to enable council to carry on, without prejudice or disadvantage, negotiations (including commercial and industrial negotiations) s7(2)(i).
9.6	Consolidation of Council's Freehold Interests in Whangārei's CBD	The public conduct of the proceedings would be likely to result in disclosure of information, the withholding of which is necessary to enable council to carry out, without prejudice or disadvantage, commercial activities s7(2)(h) and the withholding of which is necessary to enable council to carry on, without prejudice or disadvantage, negotiations (including commercial and industrial negotiations) s7(2)(i).

3. That the Independent Financial Advisor be permitted to remain during business with the public excluded.

**Carried**

## Conclusion

**The meeting concluded at 11.55am.**