

Northland Regional Council Minutes

Meeting held in the Council Chamber
36 Water Street, Whangārei
on Tuesday 27 June 2023, commencing at 10.15am

Tuhinga/Present:

Chairperson, Tui Shortland

Councillors:

John Blackwell

Joe Carr

Jack Craw

Geoff Crawford

Peter-Lucas Jones

Amy Macdonald (*Via audio visual link*)

Marty Robinson

Rick Stolwerk

I Tae Mai/In Attendance:

Full Meeting

Independent Financial Advisor

Independent Risk Advisor

Tāhūhū Rangapū - Chief Executive Officer

Pou Taumatua - GM Corporate Services

Pou Whakaritenga - GM Regulatory Services

Pou Manawhakahaere - GM Governance and Engagement

Pou Tiaki Pūtaiao – GM Biosecurity

Pou Tiaki Taiao – GM Environmental Services

Pou Tiaki Hapori - GM Community Resilience

Human Resources Manager

Translator

Governance Specialist

Part Meeting

Regional Harbourmaster

Management Accountant

Assistant Management Accountant

Financial Accountant

Corporate Planner/Legal Advisor

Policy Specialist

Financial Planning and Reporting Officer

The Chair declared the meeting open at 10.21am and proceedings commenced with the Tauāki ā roto by full council.

Ngā whakapāha/Apologies (Item 1.0)

There were no apologies.

Nga whakapuakanga/Declarations of Conflicts of Interest (Item 2.0)

It was advised that councillors should make declarations item-by-item as the meeting progressed.

Confirmation of Extraordinary Council Meeting Minutes 16 May 2023 and Council Minutes 23 May 2023. (Item 5.1)

Report from Meloney Tupou, Māori Governance and Engagement Support Admin

Moved (Stolwerk/Robinson)

That the minutes of the extraordinary council meeting held on 16 May 2023 and the council meeting held on 23 May 2023, be confirmed as a true and correct record and that these be duly authenticated with the Chair's electronic signature.

Carried

Receipt of Action Sheet (Item 5.2)

Report from Chris Taylor, Governance Specialist

Moved (Carr/Robinson)

That the action sheet be received.

Carried

Financial Report to 31 May 2023 (Item 6.1)

Report from Taka Skipwith, Financial Accountant

Moved (Stolwerk/Craw)

That the report 'Financial Report to 31 May 2023' by Taka Skipwith, Financial Accountant and dated 12 June 2023, be received.

Carried

Secretarial Note: For the month of May:

- *The Long Term Fund had made a loss of \$39k and the Short Term Fund had made a loss of \$31k.*
- *The \$70k loss across council's managed funds portfolio resulted in an unfavourable variance of \$673k (compared to the \$603k reported).*
- *The associated impact on the net (cost)/surplus after transfers from/(to) reserves was a favourable variance of \$1.922m (compared to the \$1.948m reported).*
- *There were three pre-determined carry forwards; being tree removal, fishing controls and transfer of the unspent E-Fund to the Land Management Reserve which totalled approximately \$1.25m, and a \$228k climate change contractual commitment that would be funded from the year end surplus reported to council in August.*

Secretarial Note: Item 7.3 'Adoption of Mahere-ā-Tau 2023/24 | Annual Plan 2023/24' and Item 7.4 'Adoption of User Fees and Charges Policy 2023/24' were addressed prior to Item 7.1 'Rates for the year 1 July 2023 to 30 June 2024' in accordance with legal advice.

Rates for the year 1 July 2023 to 30 June 2024 (Item 7.1)

Report from Casey Mitchell, Management Accountant; Shivam Shivam, Planning and Reporting Officer and Kim Harvey, Assistant Management Accountant

Moved (Carr/Blackwell)

1. That the report 'Rates for the year 1 July 2023 to 30 June 2024 by Casey Mitchell, Management Accountant; Shivam Shivam, Planning and Reporting Officer and Kim Harvey, Assistant Management Accountant and dated 28 April 2023, be received.

Carried

It was further moved (Craw/Stolwerk)

2. That council notes that it has had regard to section 100T of the Biosecurity Act 1993 and confirms that its analysis of Section 100T of the Biosecurity Act 1993, as included in the Long Term Plan 2021-2031, remains appropriate in relation to setting the Pest Management Rate for 2023-2024.

Carried

Secretarial Note: Detail on each of council's reserves and their purpose to be provided as part of the Long Term Plan process (including the total reserve funds accumulated from rates).

It was further moved (Stolwerk/Jones)

3. That the Northland Regional Council resolves to set the following rates under the Local Government (Rating) Act 2002 (LGRA) for the financial year commencing 1 July 2023 and ending 30 June 2024:

a. Targeted council services rate

A targeted rate as authorised by the LGRA. The rate is calculated on the total projected capital value, as determined by the certificate of projected valuation of each constituent district in the Northland region. An additional \$1.73 (including GST) per each rateable separately used or inhabited part (SUIP) of a rating unit is to be assessed across the Whangārei constituency to provide funding for the ongoing maintenance of the Hātea River Channel. The rate is differentiated by location in the Northland region and assessed as a fixed amount per each rateable separately used or inhabited part (SUIP) of a rating unit in the Far North and Whangārei Districts, and on each rateable rating unit (RU) in the Kaipara district. The rate is set as follows:

	<u>Including GST</u>
Far North District	\$159.04 per SUIP
Kaipara District	\$186.25 per RU
Whangārei District	\$180.61 per SUIP

The Whangārei District targeted council services rate amount of \$159.04 (including GST) per SUIP **includes** funding for the Hātea River Channel amount of \$1.73 (including GST).

b. Targeted land and freshwater management rate

A targeted rate as authorised by the LGRA. The rate is assessed on the land value of each rateable rating unit in the region. The rate is set per dollar of land value. The rate per dollar of land value is different for each constituent district because the rate is allocated based on projected land value, as provided for in section 131 of the LGRA. The rate is set as follows:

Including GST

Far North District	\$0.0002510 per dollar of land value
Kaipara District	\$0.0003699 per dollar of land value
Whangārei District	\$0.0002802 per dollar of land value

c. Targeted pest management rate

A targeted rate as authorised by the LGRA. The rate is calculated on the total projected capital value, as determined by the certificate of projected valuation of each constituent district in the Northland region. The rate is a fixed amount, differentiated by location in the Northland region. The rate will be assessed on each rateable separately used or inhabited part (SUIP) of a rating unit in the Far North and Whangārei Districts, and each rateable rating unit (RU) in the Kaipara District. The rate is set as follows:

Including GST

Far North District	\$78.29 per SUIP
Kaipara District	\$91.68 per RU
Whangārei District	\$88.06 per SUIP

d. Targeted flood infrastructure rate

A targeted rate as authorised by the LGRA. The rate is a fixed amount assessed on each rateable separately used or inhabited part (SUIP) of a rating unit in the Far North and Whangārei Districts, and each rateable rating unit (RU) in the Kaipara District. The rate is set as follows:

Including GST

Far North District	\$36.56 per SUIP
Kaipara District	\$36.56 per RU
Whangārei District	\$36.56 per SUIP

e. Targeted emergency and hazard management rate

A targeted rate as authorised by the LGRA. The rate is calculated on the total projected capital value, as determined by the certificate of projected valuation of each constituent district in the Northland region. The rate is a fixed amount, differentiated by location in the Northland region. The rate will be assessed on each rateable separately used or inhabited part (SUIP) of a rating unit in the Far North and Whangārei Districts, and each rateable rating unit (RU) in the Kaipara District. The rate is set as follows:

Including GST

Far North District	\$44.90 per SUIP
Kaipara District	\$52.58 per RU
Whangārei District	\$50.50 per SUIP

f. Targeted emergency services rate

A targeted rate as authorised by the LGRA. The rate is a fixed amount assessed on each rateable separately used or inhabited part (SUIP) of a rating unit in the Far North and Whangārei Districts, and each rateable rating unit (RU) in the Kaipara District. The rate is set as follows:

	<u>Including GST</u>
Far North District	\$11.44 per SUIP
Kaipara District	\$11.44 per RU
Whangārei District	\$11.44 per SUIP

g. Targeted regional sporting facilities rate.

A targeted rate as authorised by the LGRA. The rate is a fixed amount assessed on each rateable separately used or inhabited part (SUIP) of a rating unit in the Far North and Whangārei Districts, and each rateable rating unit (RU) in the Kaipara District. The rate is set as follows:

	<u>Including GST</u>
Far North District	\$16.37 per SUIP
Kaipara District	\$16.37 per RU
Whangārei District	\$16.37 per SUIP

h. Targeted regional economic development rate.

A targeted rate as authorised by the LGRA. This rate is assessed on the land value of each rateable rating unit in the region. The rate is set per dollar of land value. The rate per dollar of land value is different for each constituent district because the rate is allocated based on projected land value, as provided for in section 131 of the LGRA. The rate is set as follows:

Including GST

Far North District	\$0.0000194 per dollar of land value
Kaipara District	\$0.0000282 per dollar of land value
Whangārei District	\$0.0000214 per dollar of land value

i. Targeted Whangārei transport rate

A targeted rate as authorised by the LGRA. The rate is a fixed amount assessed on each rateable separately used or inhabited part of a rating unit (SUIP) in the Whangārei District. The rate is set as follows:

	<u>Including GST</u>
Whangārei District	\$43.17 per SUIP

j. Targeted Far North transport rate

A targeted rate as authorised by the LGRA. The rate is a fixed amount assessed on each rateable separately used or inhabited part of a rating unit (SUIP) in the Far North District. The rate is set as follows:

	<u>Including GST</u>
Far North District	\$8.68 per SUIP

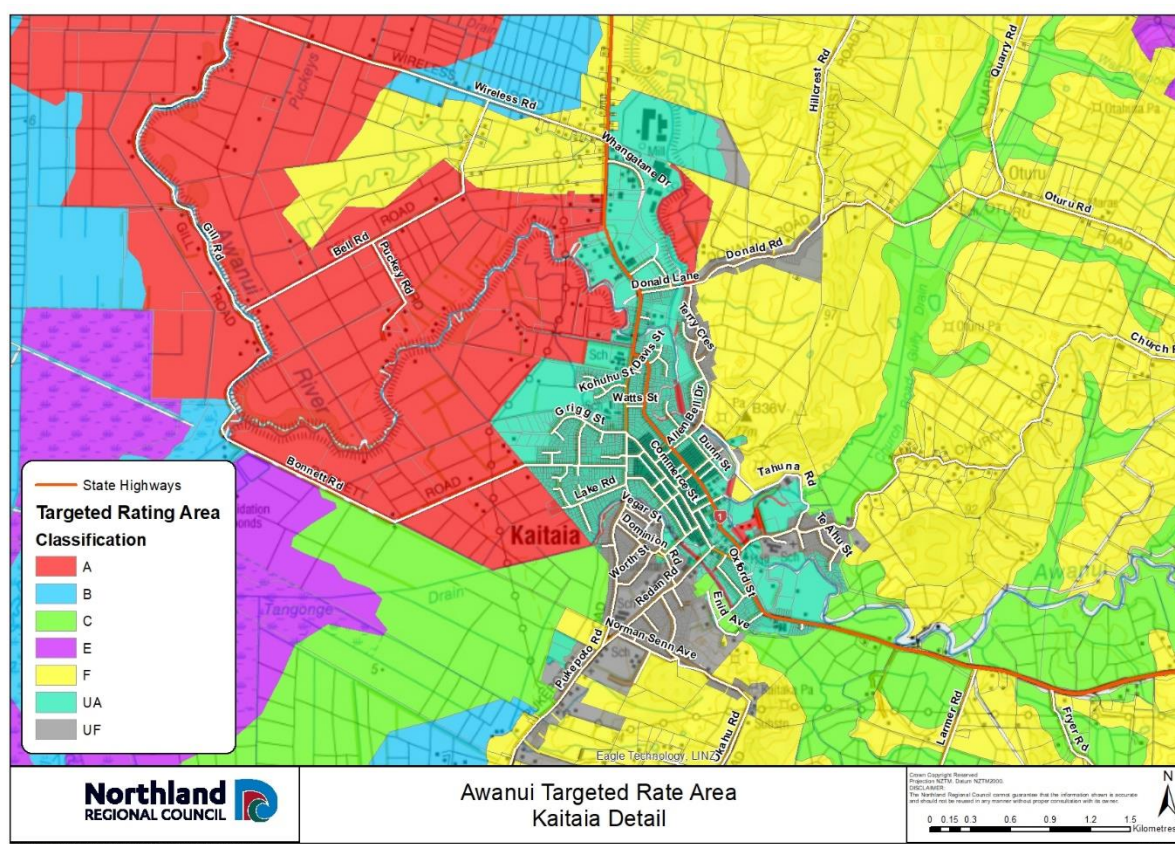
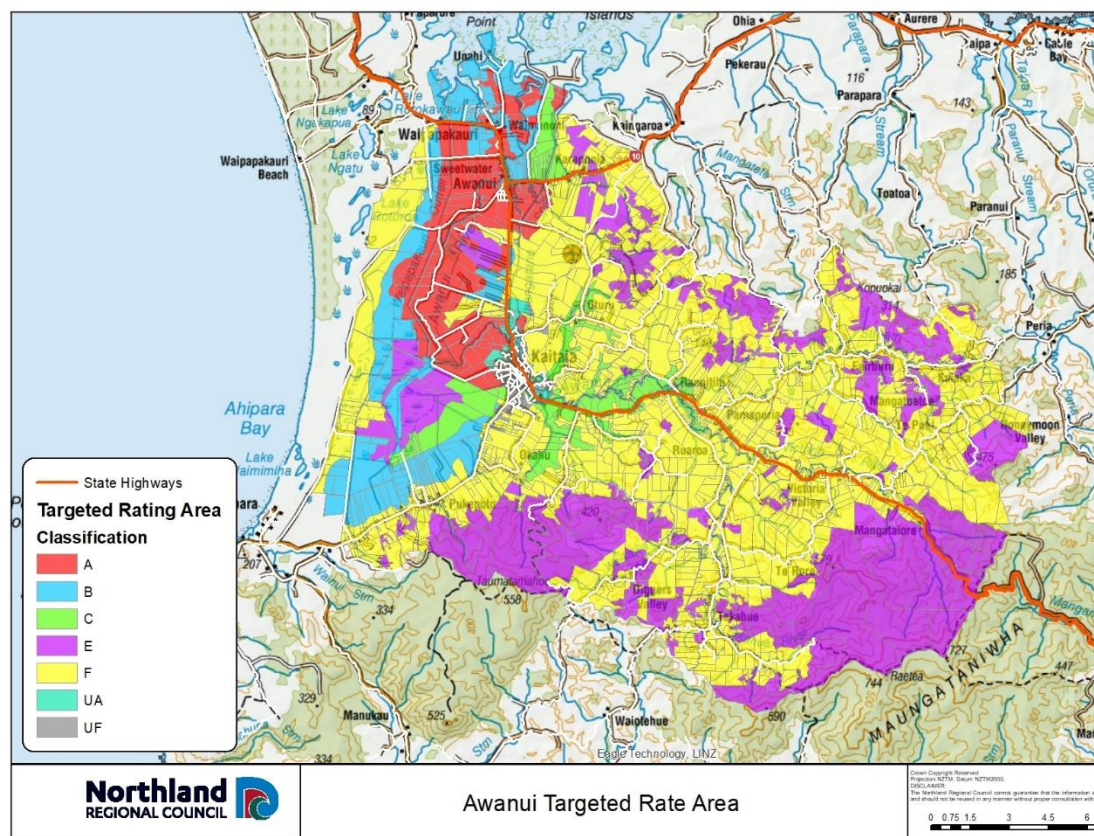
k. Targeted Awanui River management rate

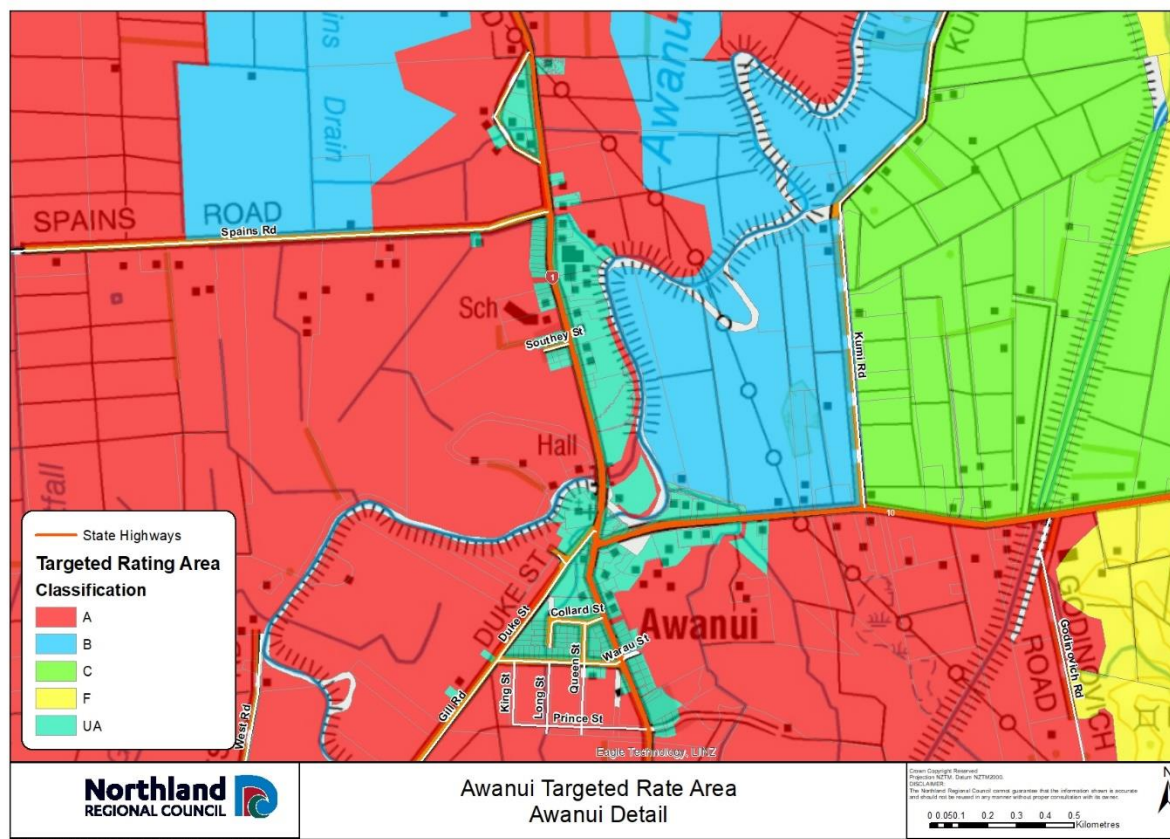
A targeted rate set under the LGRA, set differentially by location and area of benefit as defined in the Awanui River Flood Management Plan, and as defined in the following table:

The rate is set differentially as follows:

Category	Description	Rate <u>including GST</u>
UA	Urban rate class UA (floodplain location) \$262.50 direct benefit plus \$25.83 indirect benefit per separately used or inhabited part of a rating unit (SUIP).	\$288.33 per SUIP
UA	Urban rate class UA – commercial differential.	\$864.99 per SUIP
UF	Urban rate classes UF (higher ground) \$25.83 direct benefit plus \$25.83 indirect benefit per separately used or inhabited part of a rating unit.	\$51.66 per SUIP
UF	Urban rate class UF – commercial differential.	\$154.98 per SUIP
Rural	Rural rate differentiated by class, \$10.67 per separately used or inhabited part of a rating unit (SUIP) of indirect benefit plus a rate per hectare for each of the following classes of land in the defined Kaitaia flood rating district as illustrated in the following maps and table.	\$10.67 per SUIP
Class	Description	Rate <u>including GST</u>
A & B	High benefit: rural land which receives high benefit from the Awanui scheme works due to reduced river flooding risk and/or reduced duration of flooding and/or coastal flooding – all rateable land other than in the commercial differential.	\$21.84 per hectare
A & B commercial differential		\$65.52 per hectare
C	Moderate benefit: land floods less frequently and water clears quickly – all rateable land other than in the commercial differential.	\$9.98 per hectare
C commercial differential		\$29.94 per hectare
F	Contributes runoff waters and increases the need for flood protection - all rateable land other than in the commercial differential.	\$0.71 per hectare
F commercial differential		\$2.13 per hectare

The rating classifications are illustrated in the following maps:





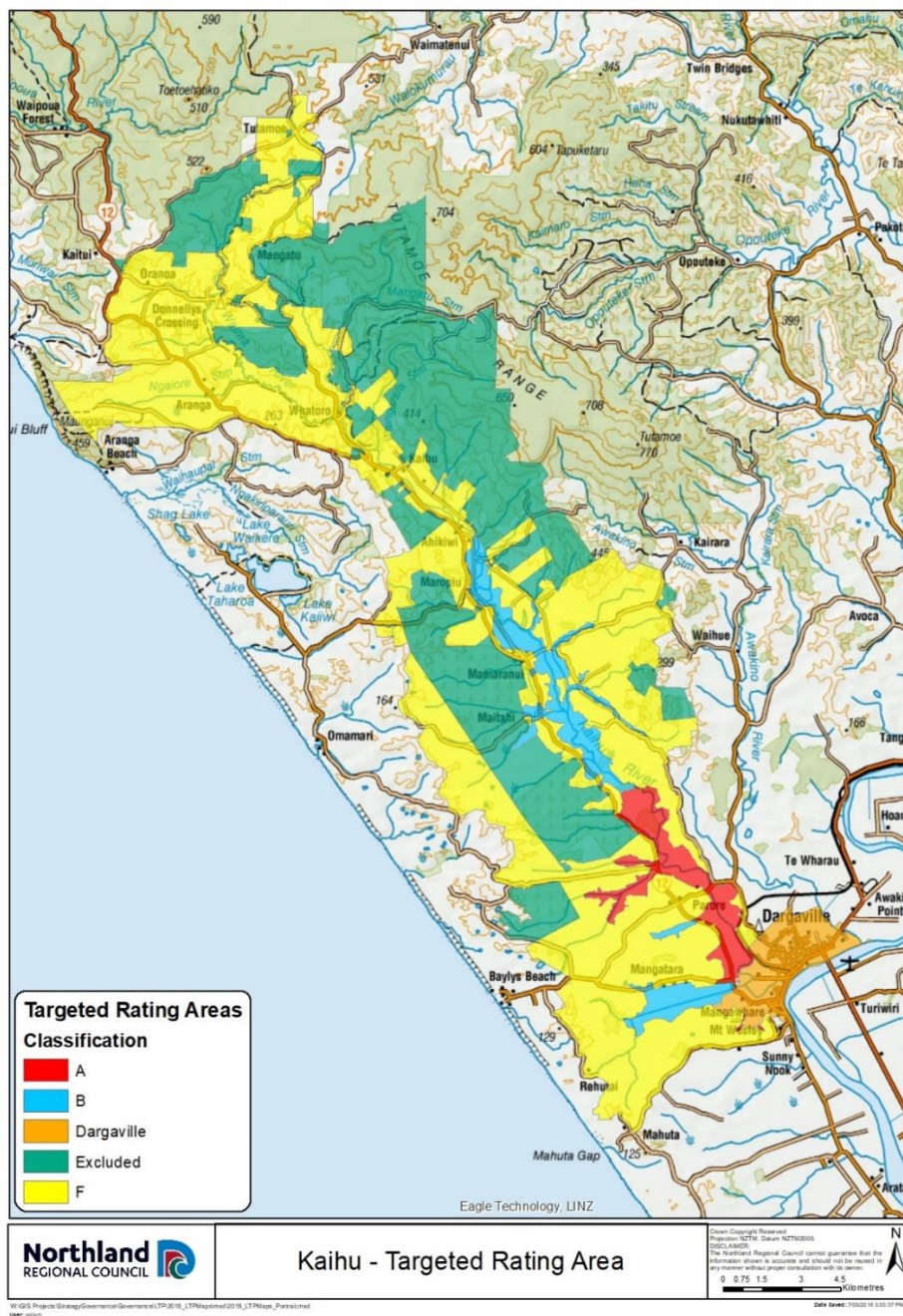
I. Targeted Kaihū River management rate

A targeted rate set under the LGRA, and set differentially by location and area of benefit as defined in the following table:

Class	Description	Rate Including GST
A	Land on the floodplain and side valleys downstream of Rotu Bottleneck.	\$23.13 per hectare
B	Land on the floodplain and tributary side valleys between Ahikiwi and the Rotu Bottleneck and in the Mangatara Drain catchment upstream of SH12.	\$11.39 per hectare
F	Land within the Kaihū River rating area not falling within Class A and Class B.	\$1.60 per hectare

Urban Contribution – A contribution from the Kaipara District Council instead of a separate rate per property: \$5,015 per annum

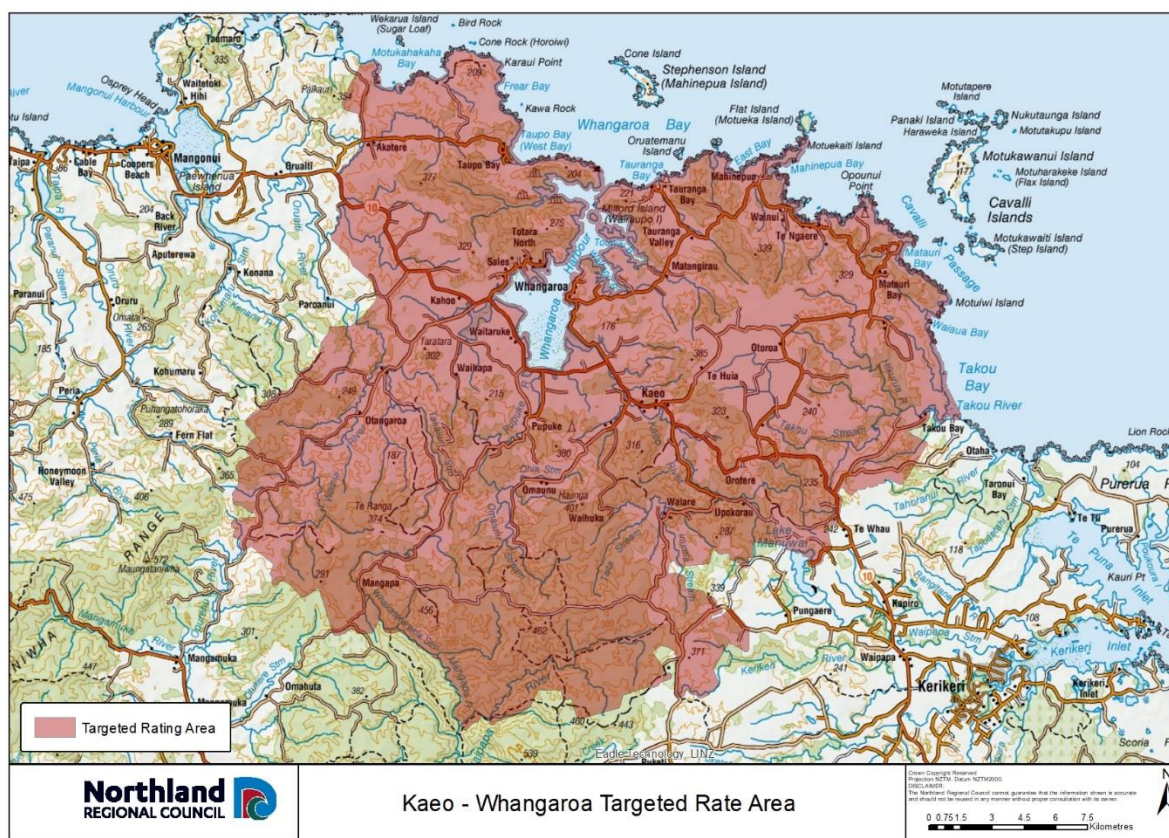
The rating classifications are illustrated in the following map:



I. Targeted Kaeo-Whangaroa rivers management rate

A targeted rate set under the LGRA, set on a uniform basis in respect of each rateable separately used or inhabited part of a rating unit falling within the former Whangaroa Ward rating rolls of 100-199, as illustrated in the map below:

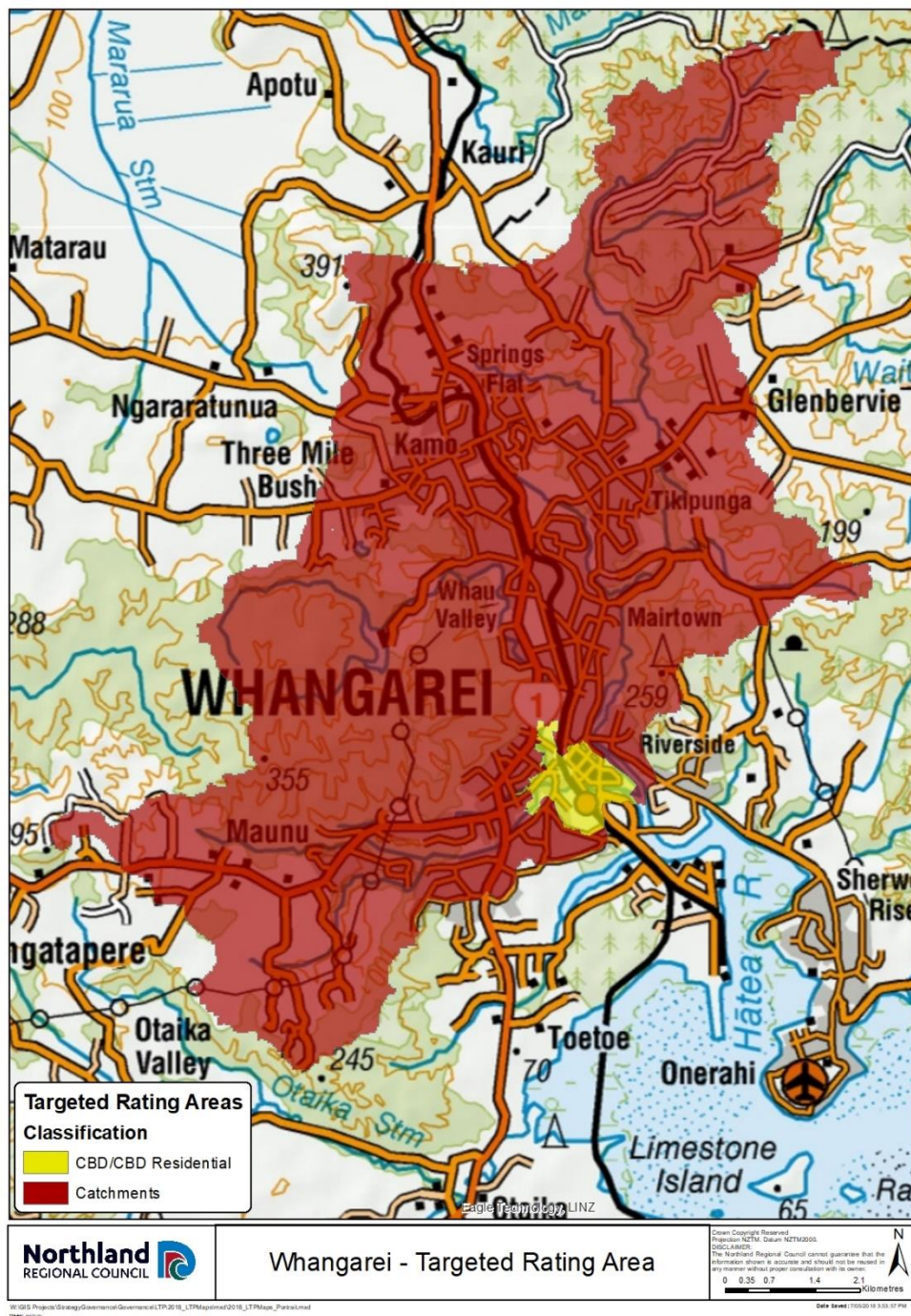
	<u>Including GST</u>
Former Whangaroa Ward	\$55.39 per SUiP



m. Targeted Whangārei urban rivers management rate

A targeted rate set under the LGRA and assessed on all rateable properties defined by reference to the differential categories and differentiated by location (illustrated in the map below) and, for some categories, land use. It is set as a fixed amount per each rateable separately used or inhabited part (SUIP) of a rating unit, as follows:

Category	Including GST
1 Commercial properties located in the Whangārei Central Business District flood area:	\$338.46 per SUIP
2 Residential properties located in the Whangārei Central Business District flood area:	\$176.43 per SUIP
3 Properties located in the contributing water catchment area (including properties falling in the Waiarohia, Raumanga, Kirikiri and Hātea River Catchments):	\$41.42 per SUIP

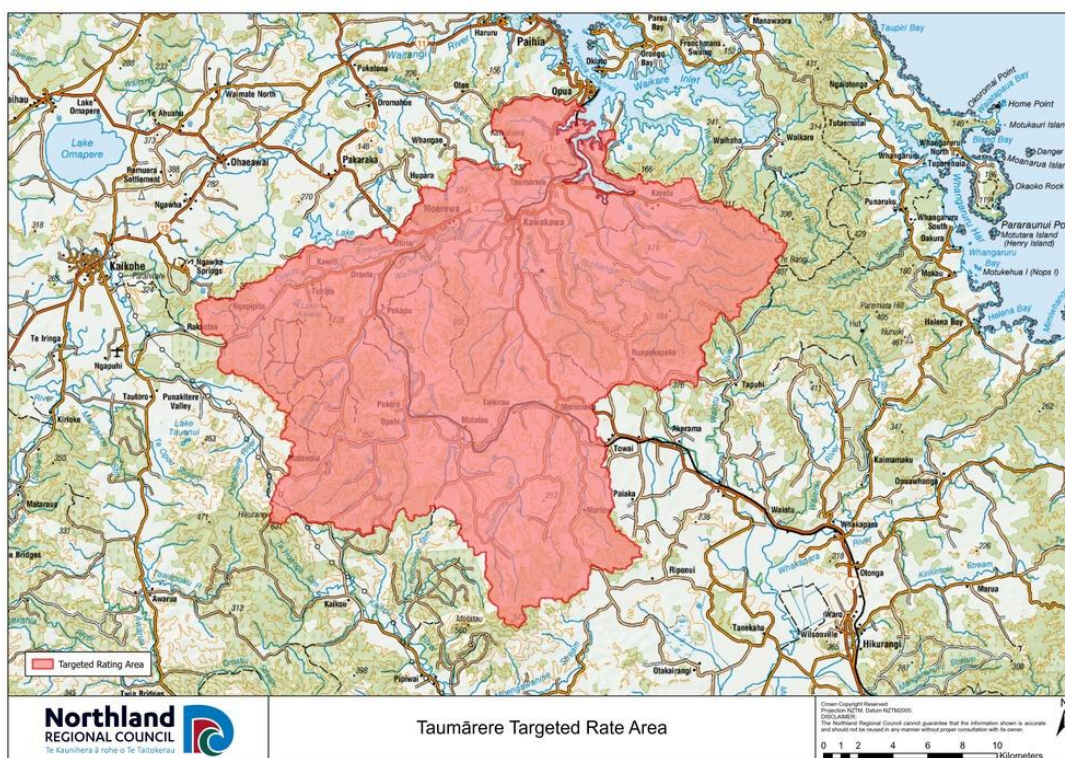


n. Targeted Taumārere rivers management rate

A targeted rate set under the LGRA, set on a uniform basis in respect of each rateable separately used or inhabited part of a rating unit falling within the Tamārere, as illustrated in the map below:

Including GST
\$60.64 per SUIP

Taumārere



4. That the Northland Regional Council resolves the following with respect to payment dates for rates and the penalty regime:

Far North District constituency:

The Northland Regional Council resolves that all rates within the Far North District constituency are payable in four equal instalments, on the following dates:

Instalment	Due date for payment
Instalment 1	21 August 2023
Instalment 2	20 November 2023
Instalment 3	20 February 2024
Instalment 4	20 May 2024

The Northland Regional Council resolves to add the following penalties to unpaid Far North District constituency rates:

- In accordance with section 58(1)(a) of the LGRA, a penalty of ten percent (10%) will be added to any portion of each instalment of Far North District constituency rates assessed in the 2023/24 financial year that is unpaid on or by the respective due date for payment as stated above. These penalties will be added on the following dates:

Instalment	Date penalty will be added
Instalment 1	28 August 2023
Instalment 2	27 November 2023
Instalment 3	27 February 2024
Instalment 4	27 May 2024

Kaipara District constituency:

The Northland Regional Council resolves that all rates within the Kaipara District constituency are payable in four equal instalments, on the following dates:

Instalment	Due date for payment
Instalment 1	20 August 2023
Instalment 2	20 November 2023
Instalment 3	20 February 2024
Instalment 4	20 May 2024

The Northland Regional Council resolves to add the following penalties to unpaid Kaipara District constituency rates:

- In accordance with section 58(1) (a) of the LGRA, a penalty of ten percent (10%) of so much of each instalment of the Kaipara District constituency rates assessed in the 2023/24 financial year that are unpaid after the relevant due date for each instalment will be added on the relevant penalty date for each instalment stated below, except where a ratepayer has entered into an arrangement by way of direct debit authority, and honours that arrangement. These penalties will be added on the following dates:

Instalment	Date penalty will be added
Instalment 1	21 August 2023
Instalment 2	21 November 2023
Instalment 3	21 February 2024
Instalment 4	21 May 2024

- In accordance with section 58(1)(b) of the LGRA, a penalty of ten per cent (10%) of the amount of all Kaipara District constituency rates (including any penalties) from any previous financial years that are unpaid on 4 July 2023 will be added on 6 July 2023.
- In accordance with section 58(1)(c) of the LGRA, a penalty of ten per cent (10%) of the amount of all Kaipara District constituency rates to which a penalty has been added under the point immediately above and which remain unpaid on 08 January 2024 will be added on 09 January 2024.

Whangārei District constituency:

The Northland Regional Council resolves that all rates within the Whangārei District constituency are payable in four equal instalments, on the following dates:

Instalment	Due date for payment
Instalment 1	20 August 2023
Instalment 2	20 November 2023
Instalment 3	20 February 2024
Instalment 4	20 May 2024

The Northland Regional Council resolves to add the following penalties to unpaid Whangārei District constituency rates:

- In accordance with section 58(1)(a) of the LGA, a penalty of ten percent (10%) will be added to any portion of each instalment of Whangārei District constituency rates assessed in the 2023/24 financial year that is unpaid on or by the respective due date for payment as stated above. These penalties will be added on the following dates:

Instalment	Date penalty will be added
Instalment 1	23 August 2023
Instalment 2	22 November 2023
Instalment 3	22 February 2024
Instalment 4	22 May 2024

- In accordance with section 58(1)(b) of the LGRA, a penalty of ten per cent (10%) will be added to any Whangārei District constituency rates (including any penalties) from any financial year prior to 1 July 2023 that still remain unpaid as at 4 July 2023. This penalty will be added on 6 September 2023.

The district councils have advised that their rates adoption dates are as follows:

- Far North District Council – 30 June 2023
- Kaipara District Council – 28 June 2023
- Whangārei District Council – 29 June 2023.

Should their collection and/or penalty dates change through the rate setting process we will need to amend our resolution accordingly.

Carried

(In putting the motion the Chair called for an expression of opinion by a show of hands, the result being Councillors Craw, Macdonald, Robinson, Shortland and Stolwerk in favour of the motion and Councillors Blackwell, Carr and Crawford against the motion. Councillor Jones abstained from voting).

Consideration and adoption of guidance on the remission of rates for Māori freehold land under development in the Far North District. (Item 7.2)

Report from Casey Mitchell, Management Accountant and Kyla Carlier, Corporate Strategy Manager

Moved (Robinson/Stolwerk)

1. That the report 'Consideration and adoption of the policies on the Remission and Postponement of Rates on Māori Freehold Land pertaining to the Far North district' by Casey Mitchell, Management Accountant and dated 12 June 2023, be received.
2. That the council supports and approves the addition of guidance documentation to the suite of policies on the Remission and Postponement of Rates on Māori Freehold Land pertaining to the Far North district, as they are relevant to the Northland Regional Council, effective from 1 July 2023 (included as the attachment pertaining to Item 7.2 of the 27 June 2023 council meeting agenda).
3. That council authorise Bruce Howse, Group Manager - Corporate Excellence, to make any necessary minor drafting, typographical, or presentation corrections to the rating policies prior to them being published on councils website.

Carried

Secretarial Note: Item 7.3 'Adoption of Mahere-ā-Tau 2023/24 | Annual Plan 2023/24' and Item 7.4 'Adoption of User Fees and Charges Policy 2023/24' were addressed prior to Item 7.1 'Rates for the year 1 July 2023 to 30 June 2024' in accordance with legal advice.

Adoption of Mahere-ā-Tau 2023/24 | Annual Plan 2023/24 (Item 7.3)

Report from Robyn Broadhurst, Corporate Planning Specialist

Moved (Carr/Craw)

1. That the report 'Adoption of Mahere-ā-Tau 2023/24 | Annual Plan 2023/24' by Robyn Broadhurst, Corporate Planning Specialist and dated 23 May 2023, be received.

Carried

Secretarial Note:

- *In accordance with the Local Government Act 2022, the Annual Plan must be adopted by 30 June 2023 in order for the district councils to strike the rates on behalf of the regional council.*
- *The content of the Annual Plan reflected the decisions made by council at the Annual Plan Deliberations on 16 May 2023.*

It was further moved (Craw/Carr)

2. That in accordance with section 95 of the Local Government Act 2002, the council adopts the Annual Plan 2023/24 (included at Attachment 1 pertaining to Item 7.3 of the 27 June 2023 council agenda).

Carried

(In putting the motion the Chair called for an expression of opinion by a show of hands, the result being Councillors Craw, Macdonald, Robinson, Shortland and Stolwerk in favour of the motion and Councillors Blackwell, Carr, Crawford and Jones against the motion.

It was further moved (Stolwerk/Robinson)

3. That council authorises Bruce Howse, Group Manager – Corporate Services to make any necessary minor drafting, typographical, rounding, or presentation corrections to the Annual Plan 2023/24 prior to final publication of the document.

Carried

Secretarial Note: Subsequent to adoption of the annual plan, a minor typographical/presentation error was noted on the last page of the final document. This error was corrected in all hardcopies and online copies of the document, under delegation set out by resolution 3 of agenda item 7.3. The correction included altering the dollar value for 'Rates Indicator' on page 60 from \$558,868.68 to \$558.87 and the 'Debt Benchmark' percentage from 0% to -43%.

Adoption of User Fees and Charges Policy 2023/24 (Item 7.4)

Report from Nicola Hartwell, Legal Advisor (Corporate Policy Specialist) and Kyla Carlier, Corporate Strategy Manager

Moved (Stolwerk/Craw)

1. That the report 'Adoption of User Fees and Charges Policy 2023/24' by Nicola Hartwell, Legal Advisor (Corporate Policy Specialist) and Kyla Carlier, Corporate Strategy Manager and dated 30 May 2023, be received.
2. That council sets and adopts the User Fees and Charges 2023/24 (included as Attachment 1 pertaining to Item 7.4 of the 27 June 2023 council meeting agenda).
3. That council authorises Group Manager – Corporate Services to make any necessary minor drafting, typographical, rounding, or presentation corrections to the User Fees and Charges 2023/24 prior to final publication of the document.

Carried

(Councillors Carr and Crawford voted against the motion)

Council appointees to Marsden Maritime Holdings (MMH) Board Nomination Committee (Item 7.5)

Report from Bruce Howse, Pou Taumatua – Group Manager Corporate Services

Moved (Stolwerk/Macdonald)

1. That the report 'Council appointees to MMH Board Nomination Committee' by Bruce Howse, Pou Taumatua – Group Manager Corporate Services and dated 2 June 2023, be received.
2. That Chair Shortland, Cr Jones and Cr Stolwerk are appointed as members to the MMH Board Nomination Committee (BNC).
3. That Chair Shortland be appointed as the Chair of the MMH BNC.
4. That Deputy Chair Craw be appointed as a backup member of the BNC, should any of those other council members appointed to the BNC not be able to participate in the recruitment process.

Carried

Harbour Remediation Business Case (Item 7.6)

Report from Ruben Wylie, Pou Tiaki Taiao

Moved (Carr/Robinson)

1. That the report 'Harbour Remediation Business Case' by Ruben Wylie, Pou Tiaki Taiao and dated 8 June 2023, be received.
2. That council confirm that the \$300,000 funding allocated for a Harbour Remediation Business Case (as per resolution 2 of item 7.4 of the 26 April 2022 council meeting) is used to develop a business case for the remediation of the Hokianga Harbour.
3. That a strategic case is prepared in general accordance with the scope set out in this report and presented to the Natural Resources Working Party for endorsement before commencing the full business case.

Carried

Secretarial Note: Given that the project would require a 'substantial commitment' from council, there would be a staged approach to developing the business case for the remediation of the Hokianga Harbour. The first step was to develop an initial strategic business case to understand the problems to be addressed and the benefits to be achieved, including an assessment of risks and uncertainties.

Chair's Report to Council (Item 8.1)

Report from Tui Shortland, Chair

Moved (Shortland/Carr)

That the report 'Chair's Report to Council' by Tui Shortland, Chair and dated 29 May 2023, be received.

Carried

Chief Executive's Report to Council (Item 8.2)

Report from Jonathan Gibbard, Tāhūhū Rangapū - Chief Executive Officer

Moved (Carr/Blackwell)

That the report 'Chief Executive's Report to Council' by Jonathan Gibbard, Tāhūhū Rangapū - Chief Executive Officer and dated 29 May 2023, be received.

Carried

Secretarial Note:

- *Although council's poplar and willow nursery had suffered damage from the recent severe weather events, to date production had been maintained.*
- *Appreciation was extended to staff involved in resolving the remaining appeals on the Proposed Regional Plan, with the plan soon to become fully operative.*
- *The Kaipara Moana Remediation Pou Tātaki to provide an update to the Natural Resources Working Party.*
- *Negotiations were continuing with the provider of the Enterprise System, with a formal decision to be made by council in August.*

Receipt of Committee Minutes (Item 9.1)

Report from Meloney Tupou, Māori Governance and Engagement Support Admin

Moved (Carr/Jones)

That the unconfirmed minutes of the:

- Joint Regional Economic Development Committee – 20 April 2023
- Te Oneroa-a-Tōhe Board – 28 April 2023
- Joint Regional Economic Development Committee - 18 May 2023
- Investment and Property Subcommittee – 31 May 2023
- Audit and Risk Subcommittee – 31 May 2023
- Civil Defence Emergency Management Group – 6 June 2023

be received.

Carried

Secretarial Note:

- *An update on the Financial Strategy to be provided at the next Investment and Property Subcommittee meeting.*
- *Attention was drawn to the importance of working closely with the local community regarding any speed signage erected for Te Oneroa-a-Tōhe / Ninety Mile Beach.*

Kaupapa ā Roto/Business with Public Excluded (Item 10.0)

Moved (Robinson/Blackwell)

1. That the public be excluded from the proceedings of this meeting to consider confidential matters.
2. That the general subject of the matters to be considered whilst the public is excluded, the reasons for passing this resolution in relation to this matter, and the specific grounds under the Local Government Official Information and Meetings Act 1987 for the passing of this resolution, are as follows:

Item No.	Item Issue	Reasons/Grounds
10.1	Confirmation of Confidential Minutes - 23 May 2023	The public conduct of the proceedings would be likely to result in disclosure of information, as stated in the open section of the meeting.
10.2	Receipt of Confidential Committee Minutes	The public conduct of the proceedings would be likely to result in disclosure of information, as stated in the open section of the meeting .
10.3	Human Resources Report - May 2023	The public conduct of the proceedings would be likely to result in disclosure of information, the withholding of which is necessary to protect the privacy of natural persons, including that of deceased natural persons s7(2)(a).

10.4	SIPO Review	The public conduct of the proceedings would be likely to result in disclosure of information, the withholding of which is necessary to prevent the disclosure or use of official information for improper gain or improper advantage s7(2)(j).
------	-------------	--

3. That the Independent Advisors be permitted to stay during business with the public excluded.

Carried

Whakamutunga (Conclusion)

The meeting concluded at 12.41pm.

Confirmed as a true and correct record 31 July 2023



Chair Tui Shortland