

Northland Regional Council Minutes

Extraordinary meeting held in the Council Chamber
36 Water Street, Whangārei
on Tuesday 4 June 2019, commencing at 9.30am

Present:

Chairman, Bill Shepherd
Deputy Chairman, David Sinclair
Councillors:
John Bain
Justin Blaikie
Paul Dimery
Mike Finlayson
Penny Smart
Rick Stolwerk
Joce Yeoman

In Attendance:

Full Meeting

GM – Strategy, Governance and Engagement
GM - Corporate Excellence
GM - Regulatory Services
Corporate Planning Manager
Policy Specialist
Management Accountant
Assistant Management Accountant
Environmental Monitoring Officer – Waste Management

Part Meeting

Chief Executive Officer

The Chair declared the meeting open at 9.30am.

Apologies (Item 1.0)

There were no apologies.

Declarations of Conflicts of Interest (Item 2.0)

It was advised that councillors should make declarations item-by-item as the meeting progressed.

Adoption of User Fees and Charges 2019/20 | Kaupapa Here a Utu (Item 3.1)

ID: A1194707

Report from Kyla Carlier, Corporate Planning Manager and Robyn Broadhurst, Policy Specialist

Moved (Yeoman/Stolwerk)

1. That the report 'Adoption of User Fees and Charges 2019/20 | Kaupapa Here a Utu' by Kyla Carlier, Corporate Planning Manager and Robyn Broadhurst, Policy Specialist and dated 20 May 2019, be received.
2. That council adopts the User Fees and Charges 2019/20; included as Attachment 1 pertaining to Item 3.1 of the 4 June 2019 extraordinary council meeting agenda.
3. That council authorises Jonathan Gibbard, Group Manager –Strategy, Governance and Engagement to make any necessary minor drafting, typographical, rounding, or presentation corrections to the User Fees and Charges 2019/20 prior to final publication of the document.

Carried

Adoption of the Annual Plan 2019/20 | Mahere-a-Tau 2019/20 (Item 3.2)

ID: A1163608

Report from Kyla Carlier, Corporate Planning Manager

Moved (Finlayson/Blaikie)

1. That the report 'Adoption of the Annual Plan 2019/20 | Mahere-a-Tau 2019/20 ' by Kyla Carlier, Corporate Planning Manager and dated 15 May 2019, be received.
2. That in accordance with section 95 of the Local Government Act 2002, the council adopts the Annual Plan 2019/20; included as Attachment 1 pertaining to Item 3.2 of the 4 June 2019 extraordinary council meeting agenda.
3. That the council authorises Jonathan Gibbard, Group Manager – Strategy and Governance to make any necessary minor drafting, typographical, rounding, or presentation corrections to the Annual Plan 2019/20 prior to the document going to print.

Carried

Rates for the year 1 July 2019 to 30 June 2020 (Item 3.3)

ID: A1196118

Report from Dave Tams, Group Manager, Corporate Excellence and Casey Mitchell, Assistant Management Accountant

Moved (Stolwerk/Smart)

1. That the report 'Rates for the year 1 July 2019 to 30 June 2020' by Dave Tams, Group Manager, Corporate Excellence and Casey Mitchell, Assistant Management Accountant and dated 24 May 2019, be received.
2. That council notes that it has had regard to section 100T of the Biosecurity Act 1993 and confirms that its analysis of Section 100T of the Biosecurity Act 1993, as included in the Long Term Plan 2018-2028, remains appropriate in relation to setting the Pest Management Rate for 2019/20.

3. That the Northland Regional Council resolves to set the following rates under the Local Government (Rating) Act 2002 (LGRA) for the financial year commencing 1 July 2019 and ending 30 June 2020:

a. Targeted council services rate

A targeted rate as authorised by the LGRA. The rate is calculated on the total projected capital value, as determined by the certificate of projected valuation of each constituent district in the Northland region. An additional \$1.73 (including GST) per each rateable separately used or inhabited part (SUIP) of a rating unit is to be assessed across the Whangārei constituency to provide funding for the ongoing maintenance of the Hātea River Channel. The rate is differentiated by location in the Northland region and assessed as a fixed amount per each rateable separately used or inhabited part (SUIP) of a rating unit in the Far North and Whangārei districts, and on each rateable rating unit (RU) in the Kaipara district. The rate is set as follows:

	<u>Including GST</u>
Far North District	\$82.16 per SUIP
Kaipara District	\$112.05 per RU
Whangārei District	\$104.25 per SUIP

The Whangārei District targeted council services rate amount of \$104.25 (including GST) per SUIP **includes** funding for the Hātea River Channel amount of \$1.73 (including GST).

b. Targeted land management rate

A targeted rate as authorised by the LGRA. The rate is assessed on the land value of each rateable rating unit in the region. The rate is set per dollar of land value. The rate per dollar of land value is different for each constituent district because the rate is allocated based on projected land value, as provided for in section 131 of the LGRA. The rate is set as follows:

	<u>Including GST</u>
Far North District	\$0.0001168 per dollar of land value
Kaipara District	\$0.0001063 per dollar of land value
Whangārei District	\$0.000991 per dollar of land value

c. Targeted freshwater management rate

A targeted rate as authorised by the LGRA. The rate is assessed on the land value of each rateable rating unit in the region. The rate is set per dollar of land value. The rate per dollar of land value is different for each constituent district because the rate is allocated based on projected land value, as provided for in section 131 of the LGRA. The rate is set as follows:

	<u>Including GST</u>
Far North District	\$0.0002379 per dollar of land value
Kaipara District	\$0.0002166 per dollar of land value
Whangārei District	\$0.0002022 per dollar of land value

d. Targeted pest management rate

A targeted rate as authorised by the LGRA. The rate is calculated on the total projected capital value, as determined by the certificate of projected valuation of each constituent district in the Northland region. The rate is a fixed amount, differentiated by location in the Northland

region. The rate will be assessed on each rateable separately used or inhabited part (SUIP) of a rating unit in the Far North and Whangārei districts and each rateable rating unit (RU) in the Kaipara District. The rate is set as follows:

	<u>Including GST</u>
Far North District	\$46.78 per SUIP
Kaipara District	\$63.80 per RU
Whangārei District	\$58.37 per SUIP

e. Targeted flood infrastructure rate

A targeted rate as authorised by the LGRA. The rate is a fixed amount assessed on each rateable separately used or inhabited part (SUIP) of a rating unit in the Far North and Whangārei districts and each rateable rating unit (RU) in the Kaipara District. The rate is set as follows:

	<u>Including GST</u>
Far North District	\$26.02 per SUIP
Kaipara District	\$26.02 per RU
Whangārei District	\$26.02 per SUIP

f. Targeted civil defence and hazard management rate

A targeted rate as authorised by the LGRA. The rate is calculated on the total projected capital value, as determined by the certificate of projected valuation of each constituent district in the Northland region. The rate is a fixed amount, differentiated by location in the Northland region. The rate will be assessed on each rateable separately used or inhabited part (SUIP) of a rating unit in the Far North and Whangārei districts and each rateable rating unit (RU) in the Kaipara District. The rate is set as follows:

	<u>Including GST</u>
Far North District	\$16.58 per SUIP
Kaipara District	\$22.61 per RU
Whangārei District	\$20.68 per SUIP

g. Targeted emergency services rate

A targeted rate as authorised by the LGRA. The rate is a fixed amount assessed on each rateable separately used or inhabited part (SUIP) of a rating unit in the Far North and Whangārei districts and each rateable rating unit (RU) in the Kaipara District. The rate is set as follows:

	<u>Including GST</u>
Far North District	\$11.69 per SUIP
Kaipara District	\$11.69 per RU
Whangārei District	\$11.69 per SUIP

h. Targeted regional sporting facilities rate

A targeted rate as authorised by the LGRA. The rate is a fixed amount assessed on each rateable separately used or inhabited part (SUIP) of a rating unit in the Far North and Whangārei districts and each rateable rating unit (RU) in the Kaipara District. The rate is set as follows:

	<u>Including GST</u>
Far North District	\$16.74 per SUIP
Kaipara District	\$16.74 per RU
Whangārei District	\$16.74 per SUIP

i. Targeted regional infrastructure rate

A targeted rate as authorised by the LGRA. This rate is assessed on the land value of each rateable rating unit in the region. The rate is set per dollar of land value. The rate per dollar of land value is different for each constituent district, because the rate is allocated based on projected land value, as provided for in section 131 of the LGRA. The rate is set as follows:

	<u>Including GST</u>
Far North District	\$0.0000297 per dollar of land value
Kaipara District	\$0.0000270 per dollar of land value
Whangārei District	\$0.0000253 per dollar of land value

j. Targeted Whangārei transport rate

A targeted rate as authorised by the LGRA. The rate is a fixed amount assessed on each rateable separately used or inhabited part of a rating unit (SUIP) in the Whangārei District. The rate is set as follows:

	<u>Including GST</u>
Whangārei District	\$22.83 per SUIP

k. Targeted Far North transport rate

A targeted rate as authorised by the LGRA. The rate is a fixed amount assessed on each rateable separately used or inhabited part of a rating unit (SUIP) in the Far North District. The rate is set as follows:

	<u>Including GST</u>
Far North District	\$8.68 per SUIP

l. Targeted Awanui River management rate

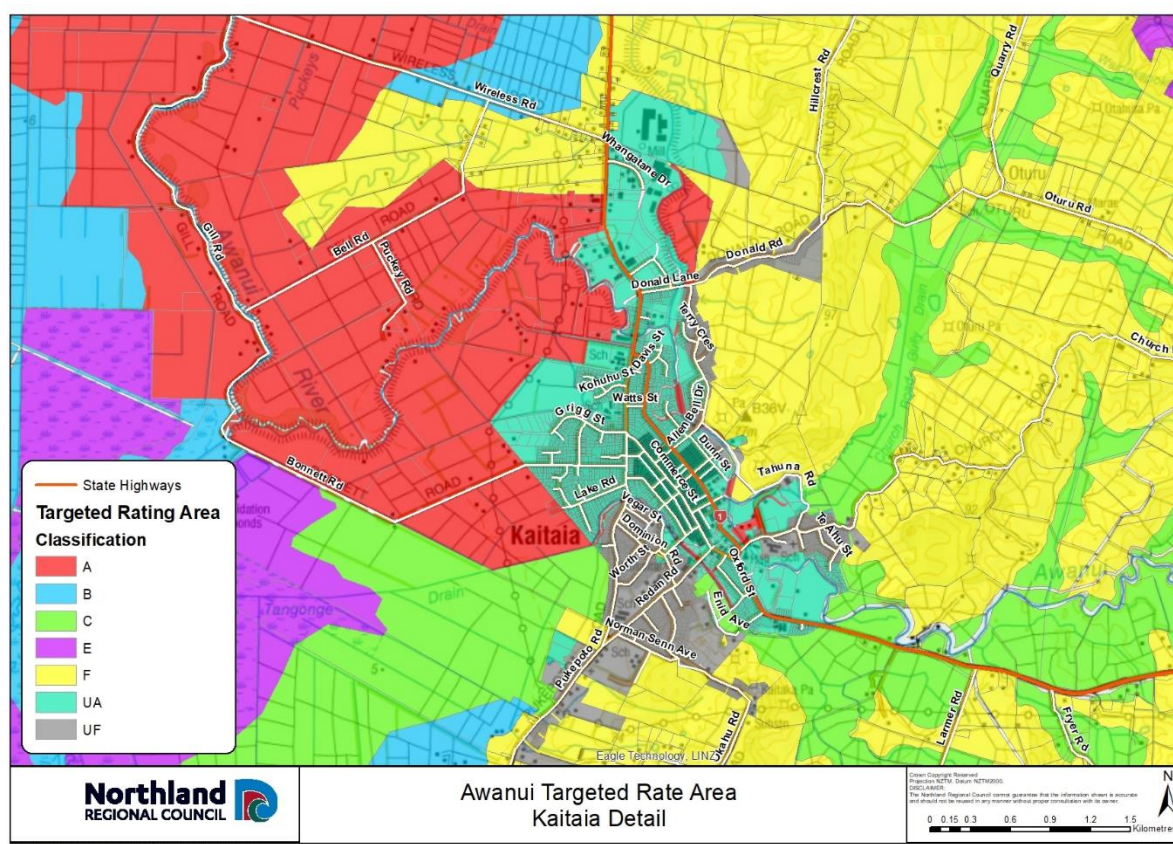
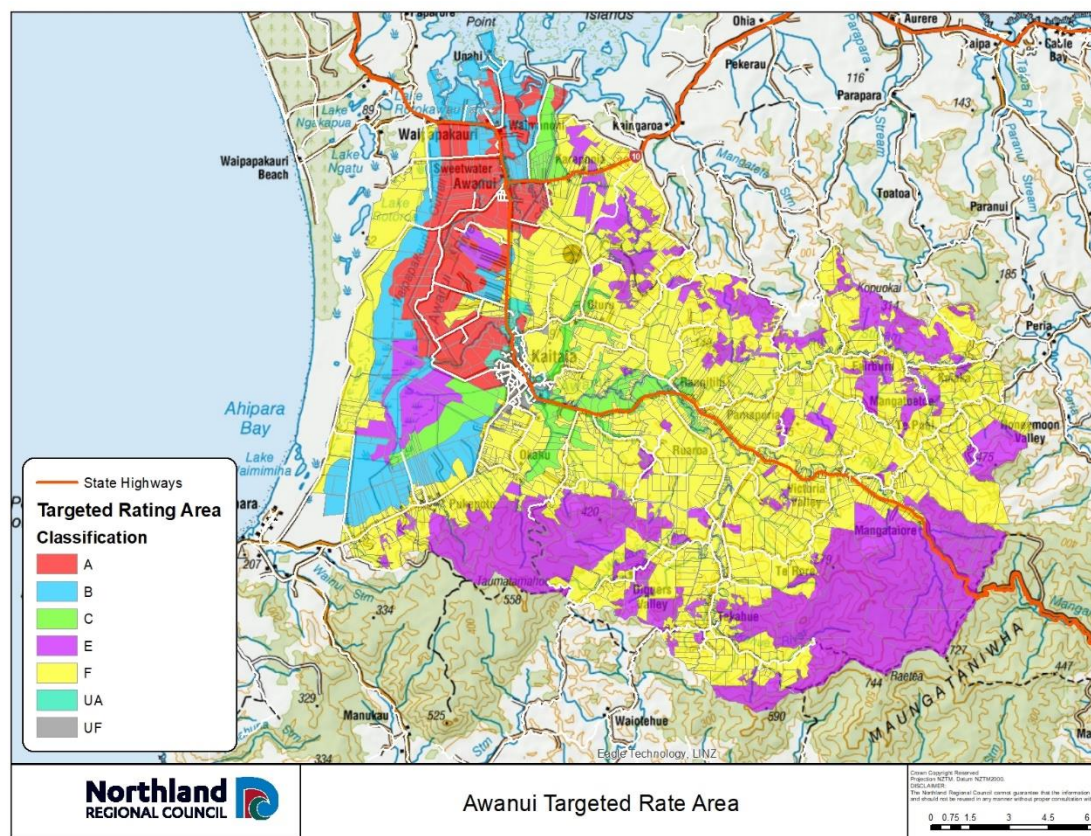
A targeted rate set under the LGRA, set differentially by location and area of benefit as defined in the Awanui River Flood Management Plan, and as defined in the following table:

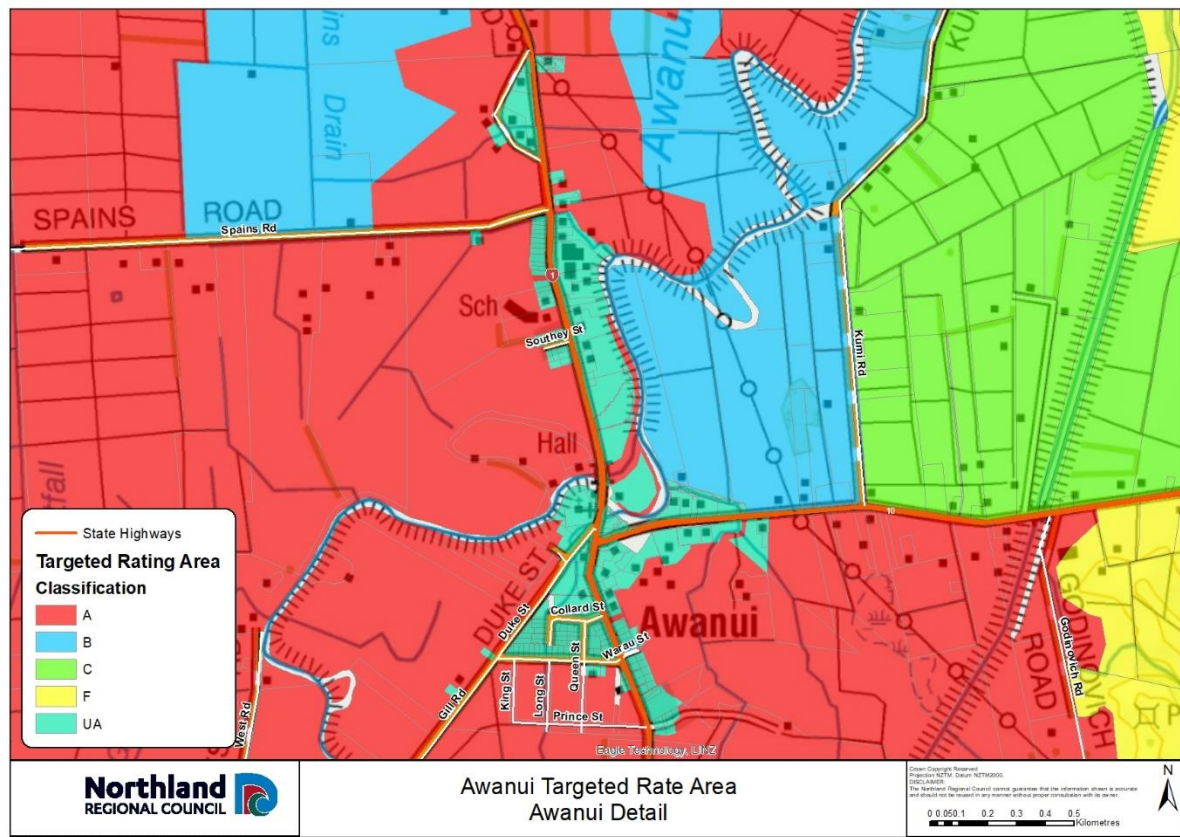
The rate is set differentially as follows:

Category	Description	Rate <u>including GST</u>
UA	Urban rate class UA (floodplain location) \$297.95 direct benefit plus \$30.01 indirect benefit per separately used or inhabited part of a rating unit (SUIP).	\$327.96 per SUIP

UA	Urban rate class UA – commercial differential.	\$983.87 per SUIP
UF	Urban rate classes UF (higher ground) \$30.00 direct benefit plus \$30.01 indirect benefit per separately used or inhabited part of a rating unit.	\$60.01 per SUIP
UF	Urban rate class UF – commercial differential.	\$180.03 per SUIP
Rural	Rural rate differentiated by class, \$13.35 per separately used or inhabited part of a rating unit (SUIP) of indirect benefit plus a rate per hectare for each of the following classes of land in the defined Kaitāia flood rating district as illustrated in the following maps and table.	\$13.35 per SUIP
Class	Description	Rate <u>including GST</u>
A & B	High benefit; rural land which receives high benefit from the Awanui scheme works due to reduced river flooding risk and/or reduced duration of flooding and/or coastal flooding – all rateable land other than in the commercial differential.	\$24.47 per hectare
A & B commercial differential		\$73.40 per hectare
C	Moderate benefit; land floods less frequently and water clears quickly – all rateable land other than in the commercial differential.	\$11.07 per hectare
C commercial differential		\$33.21 per hectare
F	Contributes runoff waters, and increases the need for flood protection - all rateable land other than in the commercial differential.	\$1.09 per hectare
F commercial differential		\$3.27 per hectare

The rating classifications are illustrated in the following maps:





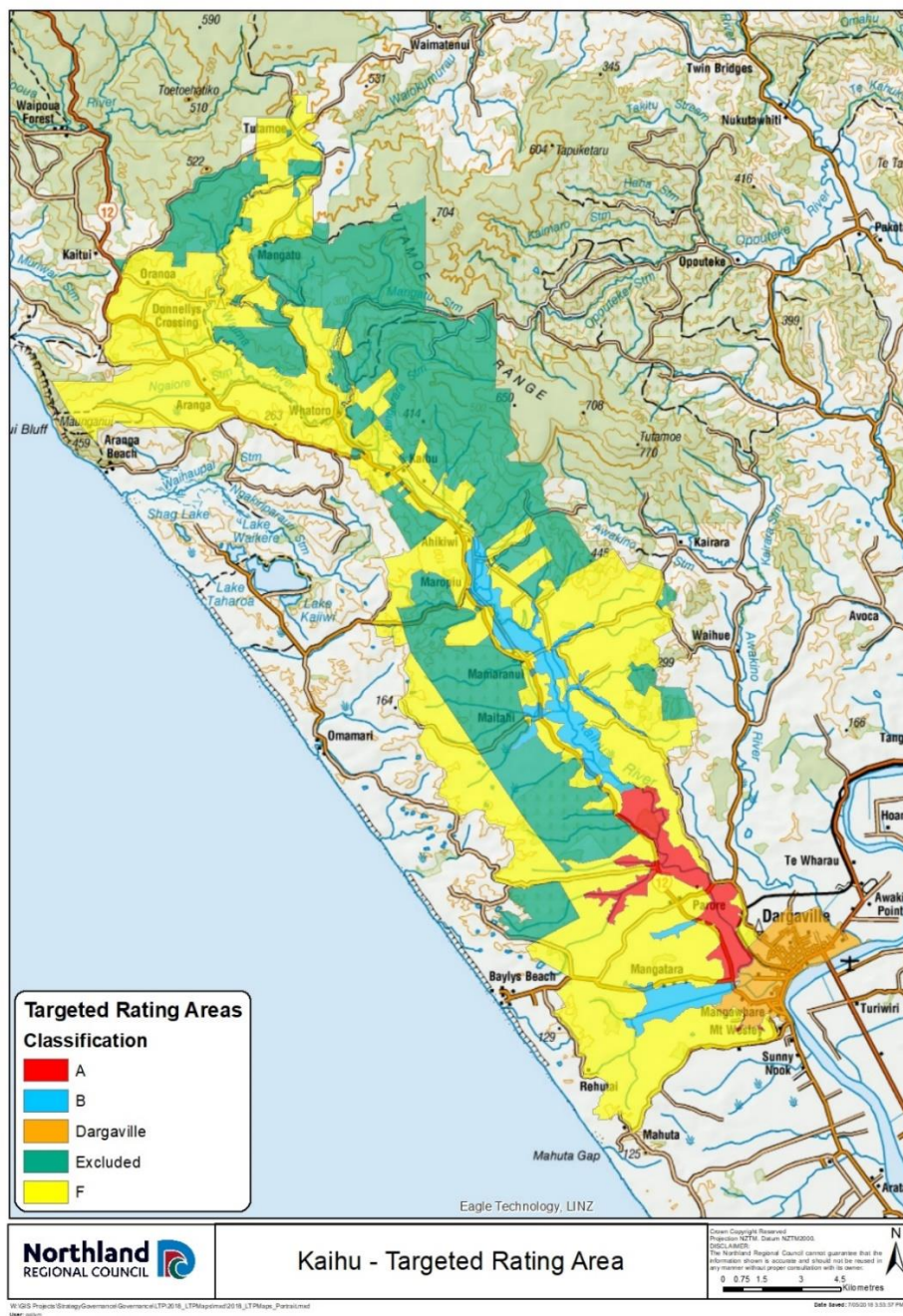
m. Targeted Kaihū River management rate

A targeted rate set under the LGRA, and set differentially by location and area of benefit as defined in the following table:

Class	Description	Rate <u>Including GST</u>
A	Land on the floodplain and side valleys downstream of Rotu Bottleneck.	\$23.72 per hectare
B	Land on the floodplain and tributary side valleys between Ahikiwi and the Rotu Bottleneck and in the Mangatara Drain catchment upstream of SH12.	\$11.68 per hectare
F	Land within the Kaihū River rating area not falling within Class A and Class B.	\$1.64 per hectare

Urban Contribution – A contribution from the Kaipara District Council instead of a separate rate per property: \$5,015 per annum

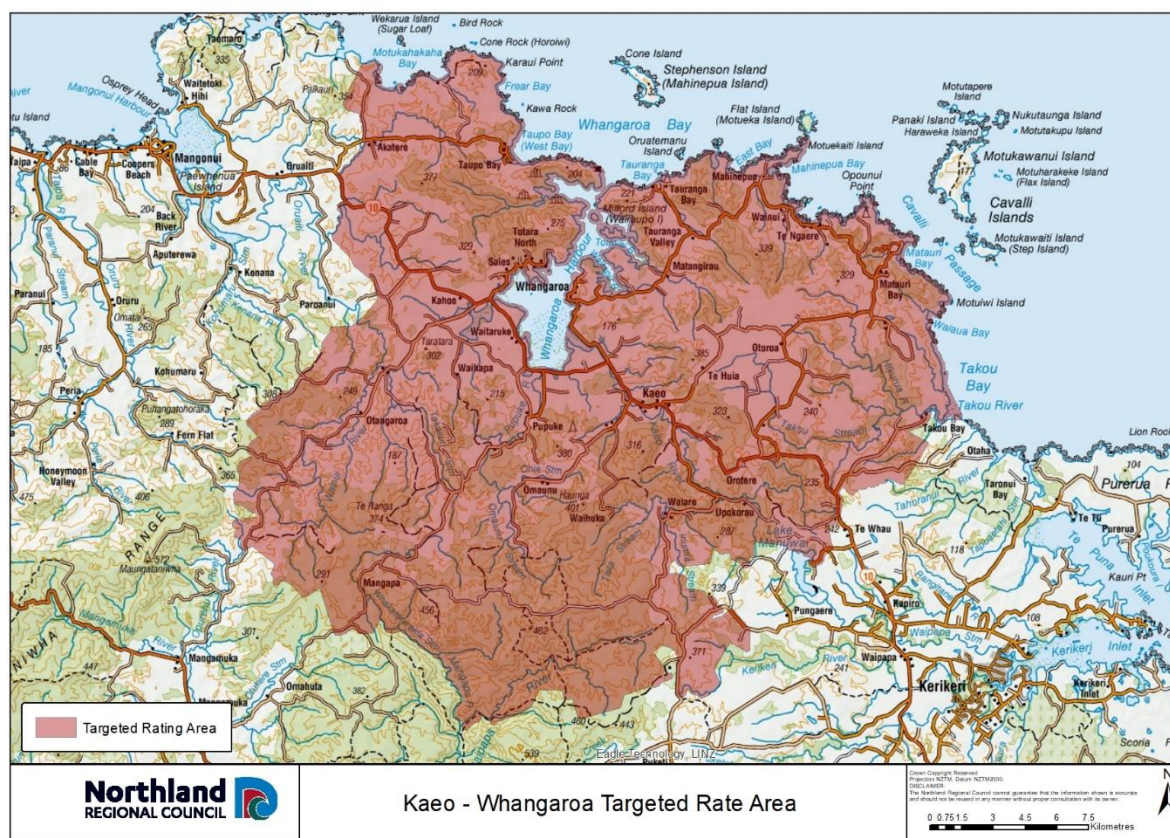
The rating classifications are illustrated in the following map:



n. Targeted Kaeo-Whangaroa rivers management rate

A targeted rate set under the LGRA, set on a uniform basis in respect of each rateable separately used or inhabited part of a rating unit falling within the former Whangaroa Ward rating rolls of 100-199, as illustrated in the map below:

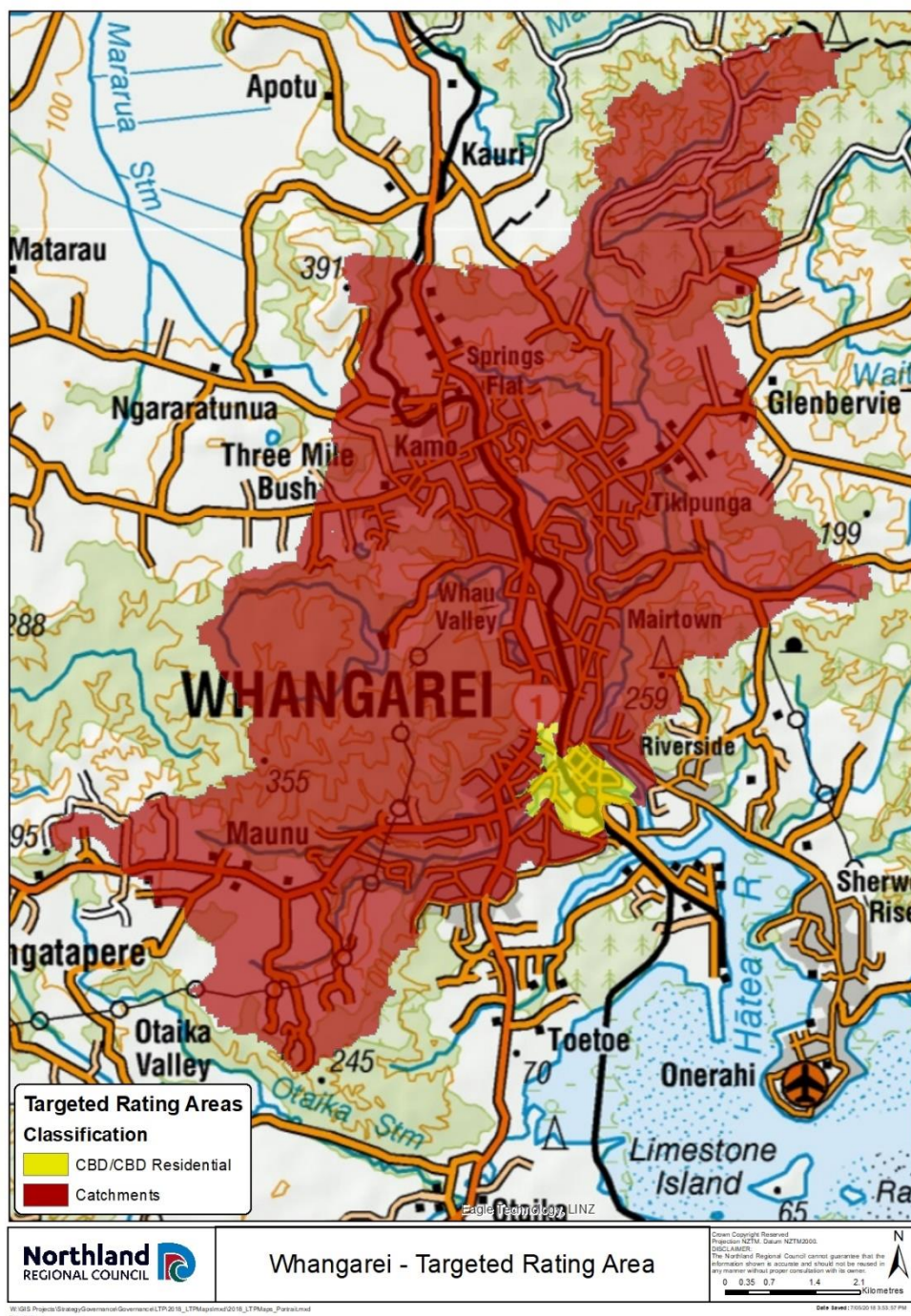
	Including GST
Former Whangaroa Ward	\$52.06 per SU1P



o. Targeted Whangārei urban rivers management rate

A targeted rate set under the LGRA, and assessed on all rateable properties defined by reference to the differential categories, and differentiated by location (illustrated in the map below) and, for some categories, land use. It is set as a fixed amount per each rateable separately used or inhabited part (SUIP) of a rating unit, as follows:

Category	Including GST
1 Commercial properties located in the Whangārei Central Business District flood area:	\$352.25 per SUIP
2 Residential properties located in the Whangārei Central Business District flood area:	\$174.16 per SUIP
3 Properties located in the contributing water catchment area (including properties falling in the Waiarohia, Raumanga, Kirikiri and Hātea River Catchments):	\$43.34 per SUIP



Differential categories for the Whangārei urban rivers management rate:

<p>Residential properties in the Whangārei central business district</p>	<p>Residential properties in the Whangārei central business district (CBD) flood area are defined as all rating units which are used principally for residential or lifestyle residential purposes, including retirement villages, flats etc.</p> <p>Residential properties also includes multi-unit properties, these being all separate rating units used principally for residential purposes, and on which is situated multi-unit type residential accommodation that is used principally for temporary or permanent residential accommodation and for financial reward, including, but not limited to, hotels, boarding houses, motels, tourist accommodation, residential clubs and hostels but excluding</p>
---	---

	any properties that are licensed under the Sale and Supply of Alcohol Act 2012.
Commercial properties in the Whangārei central business district	Commercial properties in the Whangārei CBD flood area are all separate rating units used principally for commercial, industrial or related purposes or zoned for commercial, industrial or related purposes in accordance with the Whangārei district plan. For the avoidance of doubt, this category includes properties licensed under the Sale and Supply of Alcohol 2012; and private hospitals and private medical centres.

4. Payment dates for rates, discounts, and penalty regime

That the Northland Regional Council resolves the following:

Far North District constituency:

All rates within the Far North District constituency are payable in four equal instalments, on the following dates:

Instalment	Due date for payment
Instalment 1	20 August 2019
Instalment 2	20 November 2019
Instalment 3	20 February 2020
Instalment 4	20 May 2020

The Northland Regional Council resolves to add the following penalties to unpaid Far North District constituency rates:

- In accordance with section 58(1)(a) of the LGRA, a penalty of ten percent (10%) will be added to any portion of each instalment of Far North District constituency rates assessed in the 2019/20 financial year that is unpaid on or by the respective due date for payment as stated above. These penalties will be added on the following dates:

Instalment	Date penalty will be added
Instalment 1	27 August 2019
Instalment 2	27 November 2019
Instalment 3	27 February 2020
Instalment 4	27 May 2020

Kaipara District constituency:

All rates within the Kaipara District constituency are payable in four equal instalments, on the following dates:

Instalment	Due date for payment
Instalment 1	20 August 2019
Instalment 2	20 November 2019
Instalment 3	20 February 2020
Instalment 4	20 May 2020

The Northland Regional Council resolves to add the following penalties to unpaid Kaipara District constituency rates:

- In accordance with section 58(1) (a) of the LGRA, a penalty of ten percent (10%) of so much of each instalment of the Kaipara District constituency rates assessed in the 2019/20 financial year that are unpaid after the relevant due date for each instalment will be added on the relevant penalty date for each instalment stated below, except where a ratepayer has entered into an arrangement by way of direct debit authority, or an automatic payment authority, and honours that arrangement. These penalties will be added on the following dates:

Instalment	Date penalty will be added
Instalment 1	21 August 2019
Instalment 2	21 November 2019
Instalment 3	21 February 2020
Instalment 4	21 May 2020

- In accordance with section 58(1)(b) of the LGRA, a penalty of ten per cent (10%) of the amount of all Kaipara District constituency rates (including any penalties) from any previous financial years that are unpaid on 01 July 2019 will be added on 03 July 2019.
- In accordance with section 58(1)(c) of the LGRA, a penalty of ten per cent (10%) of the amount of all Kaipara District constituency rates to which a penalty has been added under the point immediately above and which remain unpaid will be added on 06 January 2020.

Whangārei District constituency:

All rates within the Whangārei District constituency are payable in four equal instalments, on the following dates:

Instalment	Due date for payment
Instalment 1	20 August 2019
Instalment 2	20 November 2019
Instalment 3	20 February 2020
Instalment 4	20 May 2020

The Northland Regional Council resolves to add the following penalties to unpaid Whangārei District constituency rates:

- In accordance with section 58(1)(a) of the LGA, a penalty of ten percent (10%) will be added to any portion of each instalment of Whangārei District constituency rates

assessed in the 2019/20 financial year that is unpaid on or by the respective due date for payment as stated above. These penalties will be added on the following dates:

Instalment	Date penalty will be added
Instalment 1	23 August 2019
Instalment 2	25 November 2019
Instalment 3	25 February 2020
Instalment 4	25 May 2020

- In accordance with section 58(1)(b) of the LGRA, a penalty of ten per cent (10%) will be added to any Whangārei District constituency rates (including any penalties) from any financial year prior to 1 July 2019 that still remain unpaid as at 4 July 2019. This penalty will be added on 4 September 2019.

The Northland Regional Council resolves to apply the following discount to Whangārei District constituency rates:

- In accordance with section 55(3) of the LGRA, where the total rates assessed for the 2019/20 year and any arrears on a rating unit in the Whangārei District constituency are paid in full on or by the due date of the first instalment, a discount of two percent (2%) of the total rates assessed on that rating unit in the 2019/20 financial year will be applied.

Carried

Conclusion

The meeting concluded at 9.38am.