

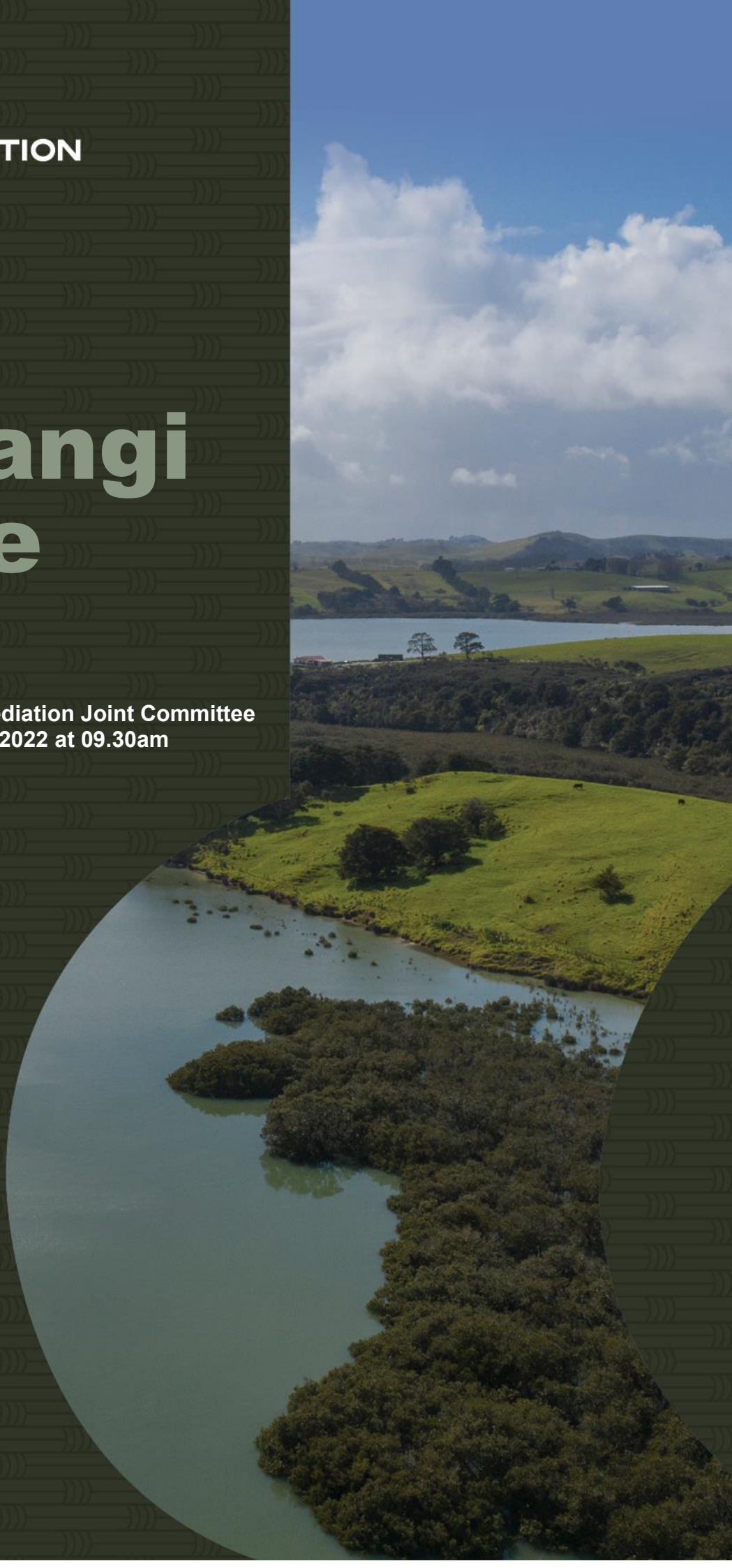
Agenda

Rārangi Take

Kaipara Moana Remediation Joint Committee
Monday 21 February 2022 at 09.30am



kmr.org.nz



Kaipara Moana Remediation Joint Committee Agenda

Meeting to be held in the remote
on Monday 21 February 2022, commencing at 09.30am

Recommendations contained in the agenda are NOT decisions of the meeting. Please refer to minutes for resolutions.

NGĀ MANA WHAKAHAERE (MEMBERSHIP OF THE KAIPARA MOANA REMEDIATION JOINT COMMITTEE)

Tame Te Rangi (Chair), Te Runanga o Ngāti Whātua
Penny Smart (Deputy Chair), Northland Regional Council
Amy Macdonald, Northland Regional Council
Cherie Povey, Ngā Maunga Whakahii o Kaipara
Daniel Newman, Auckland Council
Danielle Hancock, Auckland Council
Georgina Connelly, Te Uri o Hau
Greg Sayers, Auckland Council
Jane Sherard, Ngā Maunga Whakahii o Kaipara
Joce Yeoman, Northland Regional Council
Malcolm Welsh, Te Uri o Hau
Virginia Warriner, Te Runanga o Ngāti Whātua

KARAKIA / WHAKATAU

RĪMITI (ITEM)	Page
1.0 HOUSEKEEPING	
2.0 NGĀ WHAKAPAHĀ (APOLOGIES)	
3.0 NGA WHAKAPUAKANGA (DECLARATIONS OF INTEREST)	
4.0 WHAKĀE NGĀ MINITI (CONFIRMATION OF MINUTES)	
4.1 Confirmation of Minutes - 13 December 2021	3
5.0 WHIWHINGA MAHI (RECEIPT OF ACTION TRACKER AND FORWARD WORKPLAN)	
5.1 Receipt of Action Tracker	8
5.2 Receipt of Forward Workplan	11
6.0 NGĀ RĪMITI (ITEMS)	
6.1 Kaipara Moana Remediation Programme Draft Six Month Report	13
6.2 Catchment Reference Groups (Establishment)	28
6.3 Surge Planting Initiative (Winter 2022)	33
6.4 Pou Tātaki Report	39

TITLE: Confirmation of Minutes - 13 December 2021


From: Sandra Harris, Administrator Kaipara Maurikura

Authorised by Justine Daw, Pou Tātaki, on 17 February 2022
Group Manager/s:

Ngā mahi tūtohutia / Recommendation

That the minutes of the Kaipara Moana Remediation meeting held on 13 December 2021, be confirmed as a true and correct record.

Attachments/Ngā tapirihanga

Attachment 1: Kaipara Moana Remediation Joint Committee Minutes 13 December 2021 [↓](#) 

Kaipara Moana Remediation Joint Committee
13 December 2021

Kaipara Moana Remediation Joint Committee Minutes

Meeting held Remotely
<https://youtu.be/66-MWfSux0c>
<https://youtu.be/aBdUjKYILBE>
on Monday 13 December 2021, commencing at 09:30am

Tuhinga (Present):

Tame Te Rangi (Chair), Te Runanga o Ngāti Whātua
Penny Smart (Deputy Chair), Northland Regional Council (Chair)
Amy Macdonald, Northland Regional Council
Cherie Povey, Ngā Maunga Whakahii o Kaipara
Daniel Newman, Auckland Council
Danielle Hancock, Auckland Council (Rodney Local Board Member)
Georgina Connelly, Te Uri o Hau
Greg Sayers, Auckland Council
Jane Sherard, Ngā Maunga Whakahii o Kaipara
Joce Yeoman, Northland Regional Council
Malcolm Welsh, Te Uri o Hau
Virginia Warriner, Te Runanga o Ngāti Whātua

I Tae Mai (In Attendance):

Alan Wilcox – Former Interim Pou Tātaki	John Hutton – Strategic Business Manager Kaipara Maurikura
Duncan Kervell - Land and Catchments Projects Contractor	Sandra Harris – Administrator Kaipara Maurikura
Malcolm Nicolson - NRC	Karina Marsom - Mātanga – Pākihi
William Wright - Ringa-Hononga Mana Whenua Mana Whenua Relations Lead	Justine Daw – Pou Tātaki
Lisette Rawson - Amo - Rauora Kōawa	Ben Hope - Ringa-Pārongo
Darren van Beek - Pūtahi-Tira Mahi, Whanake, Auaha Workforce, Business Growth and Innovation Advisor	Tahiroa Bishop - Pūtohu – Rauora Kōawa Catchment Remediation Advisor

Secretarial Note: Prior to the meeting start, discussion on recording and livestream of meetings (in order to meet Covid-19 framework and local government legislation) was held. Committee members were introduced to new Maurikura staff.

The Chair declared the meeting open at 9.36am.

Karakia Timatanga and Whakatau

Kaipara Moana Remediation Joint Committee
13 December 2021

Ngā whakapahā/Apologies (Item 1.0)

Moved (Warriner / Sherard)

That the apologies for lateness from Councillor Amy MacDonald, Kaipara Uri member Georgina Connelly be received.

Secretarial Note: Connelly arrived 10.22am and MacDonald arrived 11.10am

Carried

Nga whakapuakanga (Declarations of Conflicts of Interest)

It was advised that members should make declarations item-by-item as the meeting progressed.

Confirmation of Minutes - 15 November 2021 (Item 4.1)

Report from Sandra Harris, Administrator Kaipara Maurikura

Moved (Smart / Welsh)

That the minutes of the Kaipara Moana Remediation meeting held on 15 November 2021 be confirmed as a true and correct record.

Interim Pou Tātaki Report (Item 5.1)

Report from Alan Wilcox, Interim Pou Tātaki

Moved (Sherard / Warriner)

That the report 'Interim Pou Tātaki Report' by Alan Wilcox, Interim Pou Tātaki and dated 9 December 2021, be received.

Funding Criteria Adjustment for Sediment Reduction Plans (Item 5.2)

Report from Lisette Rawson, Amo - Rauora Kōawa | Catchment Remediation Manager; Duncan Kervell, Kaipara Maurikura Land Management Specialist and John Hutton, Strategic Business Manager, Kaipara Maurikura

1. That the report 'Funding Criteria Adjustment for Sediment Reduction Plans' by Lisette Rawson, Amo - Rauora Kōawa | Catchment Remediation Manager; Duncan Kervell, Kaipara Maurikura Land Management Specialist and John Hutton, Strategic Business Manager, Kaipara Maurikura and dated 7 December 2021, be received.

Moved (Welsh / Smart)

2. That changes to funding principles and criteria annotated in Attachment 1 are agreed.

Moved (Sayers / Yeoman)

Kaipara Moana Remediation Joint Committee
13 December 2021

Operating under Covid-19 Protection Framework - Traffic Light System (Item 5.3)

Report from Ben Hope, Ringa-Pārongo | Communications Lead; Willie Wright, Ringa-Hononga Mana Whenua | Mana Whenua Relations Lead and Justine Daw, Pou Tātaki

1. That the report 'Operating under Covid-19 Protection Framework - Traffic Light System' by Ben Hope, Ringa-Pārongo | Communications Lead; Willie Wright, Ringa-Hononga Mana Whenua | Mana Whenua Relations Lead and Justine Daw, Pou Tātaki and dated 7 December 2021, be received.

Moved (Smart / Welsh)

2. That the new Traffic Light system be applied to the Kaipara Moana Remediation programme in accordance with two guiding principles:
 - a. protecting the health and safety of all those working under the Kaipara Moana Remediation banner
 - b. honouring Kaipara Moana Remediation partnership commitments by meeting face-to-face (kanohi ki te kanohi), once it is safe to do so
3. That the Joint Committee note the interim approach to applying the Framework to KMR activities, and approve the recommended interim approach to managing Joint Committee meetings for the first quarter of 2022, as outlined in Attachment 1, both subject to amendment before finalisation to reflect:
 - a. Requirements under the forthcoming Northland Regional Council COVID-19 vaccination policy [*Note: This was released on the evening of 13 December*]
 - b. As relevant, guidance in the forthcoming central government COVID-19 vaccination risk assessment tool
 - c. Joint Committee meetings will only be held online (remotely) under both the Red and Orange Traffic Light settings
 - d. The stricter of the KMR COVID-19 policy settings will apply if Auckland and Northland are under different Traffic Light settings
 - e. A recommendation that all Joint Committee members receive a negative COVID-19 test result before attending any in-person KMR hui, workshops or other public events at all Traffic Light levels, in addition to other requirements in the KMR COVID-19 policy
4. A review of the KMR COVID-19 policy will be brought to the Joint Committee meeting in March 2021 for consideration.

Moved (Newman / Povey)

Secretarial Note: Additional Recommendation was verbally recommended and included to resolution 3,3a,3b,3c,3d,3e following conversation of the Joint Committee members.

Kaipara Moana Remediation Joint Committee
13 December 2021

Strategic Risk Framework (Item 5.4)

Report from Justine Daw, Pou Tātaki and John Hutton, Strategic Business Manager, Kaipara Maurikura

1. That the report 'Strategic Risk Framework' by Justine Daw, Pou Tātaki and John Hutton, Strategic Business Manager, Kaipara Maurikura and dated 7 December 2021, be received.

Moved (Connelly / Sherard)

2. Note that the Framework will guide regular risk assessment, management, and reporting, and inform a detailed Risk Register to be included in the Kaipara Moana Remediation Year 3 Annual Work Plan for 2022-2023.

Moved (Warriner / Sherard)

Any other Business (Item 5.5)

Secretarial Note: An update on Maurikura Dedication held 3 December was provided to the Joint Committee. Discussion on the Kaipara Moana Joint Committee 2022 calendar was raised by Joint Committee members.

Karakia Mutunga

Whakamutunga (Conclusion)

The meeting concluded at 12.22.

TITLE: **Action Tracker**

From: Sandra Harris, Administrator Kaipara Maurikura

Authorised by Justine Daw, Pou Tātaki, on 17 February 2022
Group Manager/s:

Whakarāpopototanga / Executive summary

This report tables to the meeting an Action Tracker, which records actions still to be resolved from previous Kaipara Moana Remediation Joint Committee Meetings. It serves as a helpful record for both the Kaipara Maurikura and the Joint Committee to have visibility of outstanding actions, including to inform development of a forward schedule of work for the Joint Committee. The Action Tracker complements the formal Joint Committee papers and minutes, both of which are published on the Kaipara Moana Remediation website.

Nga mahi tutohutia / Recommendation

That the Action Tracker be received.

Attachments/Ngā tapirihanga

Attachment 1: Action Tracker [↓](#) 

Kaipara Moana Remediation Programme

**Joint Committee
Action Tracker (February 2022)**

Meeting Date	Ref #	Action	Who	Due	Status	Comments
17 May 2021						
Members Allowance Policy Review (Item 5.3)	1	That the members' Allowance Policy be reviewed annually, with the next review occurring in April 2022.	Pou Tātaki	April 2022	On forward calendar	This review will also include a review of sign-off delegation for members' expense claims.
25 June 2021						
Kaipara Maurikura Establishment Update (Item 5.3)	2	That a six-monthly report on the Kaipara Maurikura performance be presented to the February 2022 Joint Committee meeting.	John Hutton	February 2022	On the forward calendar	
22 July 2021						
Digital Tools Investment - remediation grant management & sediment reduction planning system (Item 5.2)	3	That KMR staff are requested to report on progress to the Joint Committee in November 2021 and April 2022.	Karina Marson	April 2022	On forward calendar	

Meeting Date	Ref #	Action	Who	Due	Status	Comments
20 September 2021						
In-Kind Contribution Process (Item 5.2)	4	That a set of rules be developed for a graduated system to quantify in-kind contributions. That the KMR consults representatives of contributor groups to ensure the in-kind contribution process is effective and equitable. That the approach taken be submitted to the Ministry for the Environment for its consideration and feedback. That approval by the Kaipara Moana Remediation Joint Committee to amend the in-kind contribution process will be sought if changes are proposed.	Steph Versteeg / Lisette Rawson / Willie Wright /	March 2022	On forward calendar	
15 November 2021						
Procurement of the Kaipara Moana Remediation Freshwater Management Tool (Item 5.1)	5	That the Pou Tātaki develop a long-term agreement with Auckland Council (Healthy Waters) for hosting, operation and maintenance costs associated with the Kaipara Moana Remediation Freshwater Management Tool [FWMT]	Pou Tātaki / Karina	Q1, Year 3 (TBC)		Timing for this report-back depends on several factors, primarily finalisation of scope and delivery timelines for the KMR FWMT module, which is itself dependent on the delivery of a digital river network by NRC.
13 December 2021						
Operating in Covid 19 Framework (Item 5.3)	6	A review of the KMR COVID-19 policy will be brought to the Joint Committee meeting in March 2021 for consideration	Pou Tātaki	March 2022	On forward calendar	Given the expected timing of the omicron outbreak, we are likely to need to delay this paper to better understand risk and future national COVID settings.

Note: Once an action is closed for a month, it will be removed from the table

TITLE: **Forward Workplan**

From: Justine Daw, Pou Tātaki

Authorised by Justine Daw, Pou Tātaki, on 17 February 2022
Group Manager/s:

Whakarāpopototanga / Executive summary

This report tables to the meeting an indicative forward Joint Committee Workplan, which sets out a high-level view of expected discussions and papers to be tabled over the calendar year 2022. It serves as a helpful record for both the Kaipara Maurikura and the Joint Committee, and will be refreshed on a monthly basis to reflect any new minuted Resolutions for which report-backs are required, new items for discussion, and any changes in timeframes

Nga mahi tutohutia / Recommendation

That the indicative Forward Workplan for the Joint Committee be received.

Attachments/Ngā tapirihanga

Attachment 1: Indicative Forward Workplan [↓](#) 



Joint Committee Indicative Forward Workplan (2022)

Meeting type	Feb	March	April	May	June	July ¹	August	Sept	Oct ²	Nov	Dec
Workshop	14/2 Programme stocktake Accelerating delivery	14/3 In kind contributions Strategic planning		16/5 Partnerships & Engagement Mātauranga Māori		18/7 Soil Conservation Science programme		19/9 Risk		14/11 Freshwater Tool (Modelling outcomes)	
Hui	21/2 6 Month Report Catchment Reference Groups Surge Planting		11/4 Annual Plan (Draft) Whenua Whānui Fund Digital Tools Members' Allowances COVID-19 settings		13/6 Annual Plan Budget (Draft) Programme Audit <i>Catchment Reference Groups</i> <i>Surge Planting</i>		15/8 Annual Report Financial Review COVID-19 settings		31/10* COVID-19 settings		12/12 6 month performance (draft)
People & Culture						Maurikura Performance appraisals	(Chair/Deputy) PT performance appraisal				

¹ Programme papers in the July-December period are dependent on the forthcoming Annual Plan. However, known 'corporate' review processes are scheduled as they are not dependent on the Annual Plan.

² Local Government elections may require a move to this meeting date

TITLE: Kaipara Moana Remediation Programme Draft Six Month Report

ID:

From: John Hutton, Strategic Business Manager, Kaipara Maurikura

Authorised by Justine Daw, Pou Tātaki, on 17 February 2022
Group Manager:

He Rāpopoto hautū / Executive summary

The Kaipara Moana Remediation Deed of Funding requires the preparation of an abbreviated Six Month Report and provision of it to the Ministry for the Environment by 28 February 2022.

A draft Six Month Report is attached (Attachment A). It is recommended the Joint Committee approve the draft in principle and delegate to the Chair and Deputy Chair final approval for provision to the Ministry for the Environment, with the ability of the Pou Tātaki to make minor editorial changes prior to submission if required. This will ensure any additional information, including better data on project outputs, can be included and adjustments to the report made if required.

Ngā tūtohu / Recommendation(s)

1. That the report 'Kaipara Moana Remediation Programme Draft Six Month Report' by John Hutton, Strategic Business Manager, Kaipara Maurikura and dated 15 February 2022, be received.
2. That the 'Draft Six Month Report' document under Appendix One be approved in principle.
3. Delegate to the Chair and Deputy Chair the power to approve a final draft of the Six Month Report for provision to the Ministry for the Environment, with the ability of the Pou Tātaki to make minor editorial changes prior to submission if required.

Horopaki / Context

Under the Kaipara Moana Remediation Deed of Funding, signed with the Ministry for the Environment on 9 February 2021, the Joint Committee must submit a Six Month Report to the Ministry for the period from 1 July to 31 December in each Financial Year (except for the first Financial Year in which the Deed is entered into). The report must be submitted either within two months of 31 December, or by a later date to be agreed in writing by the parties.

A draft Six Month Report is attached for approval in principle.

Tātari me ngā tūtohu / Analysis and advice

Six Month Report requirements

Section 4.12 of the Kaipara Moana Remediation Deed of Funding (Part B) sets out what is required in each Six Month Report, including:

- i. an update on progress towards delivering environmental outputs as outlined in the Annual Work Plan

- ii. where any formal training of personnel is funded by the Grant: the number of personnel who undertook formal training, the number who completed the training, and the number of any New Zealand Qualifications Authority credits obtained
- iii. a financial summary that provides an update on expenditure to date.

The Six Month Report also provides an opportunity to communicate key messages to the Ministry about the Kaipara Moana Remediation Programme. While the status of the KMR programme is generally well understood by Ministry staff, the Report provides a brief description of progress in establishing key partnerships and delivering remediation works, and also the challenges faced during the establishment phase of the programme and the impacts of protracted Covid-19 restrictions.

An invoice for the following 6-month period and corresponding projected expenditure tracked against the Annual Work Plan budget can also be provided. Normally this would happen by 30 November of the financial year. For this 2021-2022 financial year, it was assessed that the Crown funding already held by the Kaipara Moana Remediation Programme (KMR) would be sufficient to support the programme to 31 June 2022, and therefore no invoice for further Crown funding was required.

Finalising the draft Six Month Report and delegations to the Chair and Deputy Chair

It is proposed the draft Six Month Report is approved in principle, with the Chair and Deputy Chair being delegated the power to approve a final report for submission to the Ministry for the Environment by 28 February 2022. It is also recommended the Pou Tātaki is given the ability to make minor editorial changes to the report before submission. This is to avoid the need for the Chair and Deputy Chair to approve the report a second time if typographical and other minor matters need attention.

Six Month Report formatting and look

The Six Month Report is an abbreviated report for MfE's internal use, and does not require formatting and illustrations consistent with the KMR brand and identity, as is provided in the Annual Report. Rather, the report follows the formatting and look of the Annual Work Plan, which is based on a template provided by the Ministry for the Environment for all Jobs for Nature projects.

Considerations

1. Aromātai whāinga haumi mō te ora / Wellbeing Investment objectives and assessment

Provision of a Six Month Report to the Ministry for the Environment is a requirement under the Kaipara Moana Remediation Deed of Funding. The continuation of Crown funding, which enables the programme to meet investment objectives, is contingent on meeting obligations under the Deed.

2. Ngā ritenga take pūtea / Financial implications

There are no financial implications in approving the Six Month Report. Budget for its preparation is covered by the general operating budget of the Kaipara Maurikura business unit and the data used is gathered as a normal part of KMR operations.

3. Ngā hiranga me ngā hononga / Significance and Engagement

In relation to section 79 of the Local Government Act 2002, the decisions arising from this report are considered to be of low significance when assessed against Northland Regional Council's significance and engagement policy. This does not mean that this matter is not of

significance to tangata whenua and/or individual communities, but that the joint committee is able to make these decisions without undertaking further consultation or engagement.¹

4. Ngā tūraru me ngā mauru / Risks and mitigation

The Six Month Report provides accountability and transparency to the work of the KMR programme, and assurance to programme partners on performance.

5. Ngā whāinga mō āmuri / Next steps

If approved in principle, the draft Six Month Report will be finalised under delegation by the Chair and Deputy Chair and provided to the Ministry for the Environment by 28 February 2022.

Ngā tapirihanga / Attachments

Attachment 1: Attachment A – Draft KMR Six Month Report [↓](#) 

¹ This joint committee operating under the Local Government Act which requires a significance and engagement policy (which identifies when matters require special consultation with tangata whenua and the community) and to have regard to that policy when making decisions. As the administrative support for the joint committee is provided by the Northland Regional Council, it's that councils Significant and Engagement Policy that will apply to joint committee decision making.

Kaipara Moana Remediation Programme

Six Month Report, FY2021-22

[Draft for approval in principle, 16 February 2022]

Undertaken by

**Ngā Maunga Whakahii o Kaipara, Te Rūnanga o
Ngāti Whātua, Te Uri o Hau Settlement Trust,
Northland Regional Council, and Auckland Council**

(Year Two - 2021/22)

1 Contact details			
KMR main contact (name and organisation)	Stephanie Versteeg	Ministry's main contact	Ilka Pelzer
Organisation	Kaipara Maurikura		
Email address	stephaniev@kmr.org.nz	Email address	Ilka.Pelzer@mfe.govt.nz
Phone	027 2819106	Phone	021 08799467
Postal address	c/o Northland Regional Council Private Bag 9021 Whangārei Mail Centre Whangārei 0148	Postal address	PO Box 10362 Wellington 6143
Physical address	36 Water Street Whangārei 0110	Physical address	23 Kate Sheppard Pl Wellington 6011

2 Six Month Report – overview
Kaipara Moana Remediation Programme – Six Month Report
<p>Under the Kaipara Moana Remediation (KMR) Deed of Funding, the Kaipara Moana Remediation Joint Committee will submit to the Ministry for the Environment an abbreviated report that relates to the period from 1 July to 31 December in each Financial Year. The report will:</p> <ul style="list-style-type: none"> • provide an update on progress towards delivering environmental outputs as outlined in the Annual Work Plan • record the number of people who undertook and completed formal training • give a financial summary that provides an update on expenditure to date <p>A financial summary with projected expenditure for the following 6-month period tracked against the Annual Work Plan budget is required to invoice the Crown for funding for the following 6-month period. As at 31 December 2021, existing Crown funding currently held can be utilised to cover the period to 30 June 2022, and there is no need for further Crown funding for this 6-month period.</p>

3 Commentary on KMR Programme progress to 31 December 2021

The KMR Programme has, in difficult circumstances, made solid progress in the period 1 July to 31 December 2021. This has been a period of programme establishment, including policy and capacity development, accompanied by a shift to delivery. The programme is, however, running behind on some KPI areas recorded in the Year 2 Work Plan.

Critical headwinds for the six months to 31 December 2021 have included:

- Protracted Covid-19 lockdowns, particularly in the Auckland area, including border closures that have inhibited the movement of personnel and engagement with landowners
- Slower than planned recruitment of staff for the Kaipara Maurikura, in part caused by Covid-19 lockdowns, which has limited progress in scaling up delivery
- Delays to training Field Advisors, again due to Covid-19 lockdowns, with a flow-on impact of slowing landowner engagement
- General hesitancy to engage in community and marae settings
- Bottlenecks (labour, accredited suppliers).

Key successes have nevertheless been achieved, including matters not captured by the Jobs for Nature Focus Area Indicators. These include:

- Kaipara Maurikura almost fully staffed (13 full time roles)
- Contracts with key partners finalised with work underway e.g. Environs Ltd, Fonterra
- Initial Field Advisor Training undertaken, with 15 participants of whom 11 are likely to become KMR Field Advisors, and further trainings planned for early 2022.
- KMR website established with effective and distinctive branding, with web statistics showing interest being generated
- Direct communication and engagement with over 200 landowners interested in KMR grants funding
- Shift to six-weekly Pānui / updates to drive landowner engagement and uptake
- 10 community / Whenua Whānui Fund applicant groups engaged with
- 8 delivery partners (i.e., Environs, Fonterra, Forest Bridge Trust) and 42 suppliers (i.e., fencers, nurseries) met, with accreditation process well progressed for suppliers
- Development of key digital tools contracted for and underway.

While the KMR programme is ramping up on-the-ground delivery, headwinds remain and are anticipated to impact on progress over the six months to 30 June 2022:

- Omicron impacts on workforce and ability to engage with landowners and delivery remediation works
- Key systems still in 'build mode', including digital tools
- Some strategic and operational policies still to be finalised, including for space-planting and afforestation remediation options
- Fast-changing operating context (environmental regulation, Treaty settlement negotiations, social and economic pressures including inflation and supply-chain pressures).

The financial summary provided below reflects expenditure at 31 December 2021. It should be noted that expenditure will not be evenly spread throughout this financial year. Significant budget has been committed to projects which are in progress, and where financial transactions are either resolved at project end or otherwise made in staged payments. Remediation works supported by KMR grants funding and currently underway are typically accounted for at project close, when grants money is paid to landowners – this is also when in-kind contributions are counted. Further, key investment decisions in digital tools have passed through the development and contracting stage in the first six months of FY2021-22, with development costs falling mainly in the second six months and extending into FY2022-23.

4 Contribution to the Jobs for Nature Focus Area Indicators

The Kaipara Moana Remediation funding is part of the Government Jobs for Nature (J4N) Programme. This programme has specific targets and indicators for that will be used to track the impact of the programme.

Context of J4N Indicators for KMR – the metrics below for the KMR Programme were provided as estimates in July 2021, with acknowledgement they would need to be refined as FY2021-22 progressed. Significant uncertainty on the speed and level to which grants funding would be taken up was identified. Assumptions about average land area per farm, farm type, and planting and fencing rates were acknowledged as needing to be reassessed when better data is available.

Limitations on data provided – the data provided below is considered largely accurate, including the number of Farm Environment Plans completed (these include ‘Sediment Reduction Plans’ and similar grants-funding remediation plans), plants planted or contracted to be planted, and metres of fencing built or contracted. Areas planted are an estimated based on 4,500 stems per hectare, and typically comprise long ribbons of riparian planting along streambanks.

Funding arrangements with landowners are made as contracts, with work being undertaken at different speeds depending on season and circumstances, and with verification taking time after actual completion – hence the inclusion of both ‘completed’ and ‘contracted’ outputs. Generally, most planting outputs were completed in the winter 2021 season, while fencing outputs are being completed in the 2021-22 summer. Verification of planting outcomes takes place around 6 months after work is completed, to check plant survivability.

The data is less reliable for the number of people hours worked. Calculations have been made based on outputs in fencing and planting against standard hours (i.e., 150 hours for 1 hectare of planting). More reliable data will be available when key digital tools are completed and in use to manage grants funding.

Focus Area	Metric	Six-month actual	Six-month target	Total Year 2 target
Freshwater restoration	Number of plants planted in riparian, lake, or wetlands areas <i>Note – actual based on planting completed and contracted</i>	307,887	114,750 (268%)	650,250 (47%)
	Area (ha) of riparian, lake, or wetlands planting completed <i>Note – actual based on planting completed and contracted</i>	68	26 (262%)	145 (47%)
	Length (km) of new fencing constructed and maintenance of existing fencing <i>Note – actual based on completed and contracted</i>	131	91 (144%)	168 (78%)
On farm and other restoration activities	Number of Farm Environment Plans agreed and underway (total)	78	184 (42%)	248 (31%)

	<ul style="list-style-type: none"> Sediment Reduction Plans (grants) Tiaki FEPs 	<ul style="list-style-type: none"> 46 32 	<ul style="list-style-type: none"> 128 56 	<ul style="list-style-type: none"> 192 56
	Area (ha) of works covered by Farm Environment Plans completed	12,991	32,460 (40%)	48,690 (27%)
	Area (ha) of afforestation or other biodiversity planting not in riparian, lake, or wetlands margins completed	0	0	0
	Area (ha) of space-planting for erosion control completed	0	0	0
Nature based employment	<p>Number of people-hours worked in each reporting period</p> <p><i>Actuals based on (i) monthly estimates provided for JAN reporting; (ii) revised estimates based on 6 month fencing and planting outputs. Noting individuals were often engaged on a part-time basis so total hours do not directly translate to FTE based on a 40 hour week. Includes both contractor and landowner labour.</i></p>	38,417	44,290 (87%)	74,155 (52%)
	<p>Number of people undertaking formal training in each reporting period</p> <p><i>Note – 4-day KMR Field Advisor training course. No formal qualification at this stage, although work is underway to register in qualifications framework.</i></p>	15	No target set for this financial year	

5 Project key tasks/activities for Year 2 (2021/22)					
YEAR 2 Project	Project Summary	Progress Update - Commentary	YEAR 2 Estimated budget (\$ million)		
			Six Month Actuals (\$ million)		
			Crown contribution	Other (Council, Landowner, Partner) Contribution	TOTAL Budget
Remediation			\$6.150	\$7.494	13.644
			(\$0.773)	(\$1.285)	(\$2.058)
K2021-001 Sediment Reduction Plans – Remediation Grants Funding	<i>Grants funding to landowners across the Kaipara Moana catchment through Sediment Reduction Plans (as priority identification and funding agreements), to undertake riparian and wetland fencing and planting.</i>	Actuals represent grants funding provided after on-farm remediation works are completed and signed off, with landowner contributions matching grants funding. 18 Sediment Reduction Plan projects contracted for grants funding of \$442,653 with landowners. Pace of engagement and delivery rapidly increasing as new KMR Field Advisors are trained and begin work with landowners.	\$2.700 (\$0.139)	\$3.300 (\$0.906)	\$6.000 (1.045)
K2021-002 Kaipara Uri Partnership	<i>Delivery of environmental services to the KMR and landowners by a Kaipara Uri environmental entity, including nursery outcomes and landowner engagement to achieve Sediment Reduction Plans for grants funding. Associated benefits are to help build organisational capacity and workforce outcomes for Kaipara Uri.</i>	Service delivery contract between KMR and Environs Ltd (Te Uri o Hau Trust acting on behalf of Kaipara Uri) entered into. Work underway in a range of areas, including support for the Kaipara Maurikura on mana whenua engagement, developing Sediment Reduction Plans with landowners, and Mātauranga Māori Strategy.	\$0.300 (\$0.125)	\$0.300 (\$0.000)	\$0.600 (\$0.125)
K2021-003 Catchment Reference Group Project	<i>Identification and development of remediation projects (consistent with KMR objectives and grants funding criteria) by hapū and marae community groups in upper-catchment river systems not affiliated to Kaipara Uri, with</i>	Engagement undertaken with number of catchment groups to identify remediation projects and how to progress Catchment Reference Group approach.	\$0.560 (\$0.000)	\$0.600 (\$0.000)	\$1.160 (\$0.000)

	<i>assistance provided by the same to deliver remediation works with landowners.</i>				
K2020-005 NRC (North Kaipara) Grants Funding	<i>On-farm mitigation works in the 2021 calendar year by using the Northland Regional Council's current Environment Fund criteria and process, and as a stopgap while KMR processes are put in place, noting timeframes to completion have been extended to April/May 2022 to accommodate Covid related delays.</i>	Total of 37 remediation projects (\$298,610 grants funding) progressed. 7 completed in FY2020-21, and a further 7 completed at 31 December 2021 (\$45,545 grants funding). 23 projects being finalised (\$175,916 grants funding). Landowner contributions matching grants funding accounted for when projects are completed.	\$0.000 (\$0.000)	\$0.538 (\$0.121)	\$0.538 (\$0.121)
K2020-006 Fonterra Tiaki Partnership	<i>A partnership pilot between the KMR Programme and Fonterra to December 2022, with two key outputs. First, to complete \$1.8 million of on-farm remediation works with Fonterra-suppliers based on KMR grants funding criteria and consistent with the Sediment Reduction Plan approach. Second, to support the completion of 150 new Farm Environment Plans for Fonterra suppliers using the Fonterra Tiaki platform.</i>	Contract between Fonterra and KMR negotiated and entered into. As at 31 December, 32 Tiaki Farm Environment Plans completed and 8 Fonterra farmers contracted for grants funding with work underway (\$116,380 granted). Fonterra provides an in-kind contribution of \$3,000 per Tiaki FEP. Landowner contributions match grant funding. Project uptake increasing significantly as further resource in Fonterra Sustainable Dairy Advisors is provided.	\$1.455 (\$0.300)	\$1.442 (\$0.213)	2.897 (\$0.513)
K2020-007 Waiotū Catchment Care Group	<i>Deliver on farm actions identified by farmer/community-led group comprising 19 neighbouring landowners whose properties drain into the Waiotū River using KMR grants funding criteria. Noting the project is anticipated to run to June 2023 at a total cost of \$1.705 million.</i>	Engagement undertaken but slower pace of uptake than anticipated, hindered in part by Covid restrictions. Two remediation projects completed (\$9,302 granted) with other projects in development.	\$0.865 (\$0.000)	\$0.823 (\$0.028)	\$1.688 (\$0.028)
K2020-008 Waterway Wetland Remediation – Forest Bridge Trust	<i>Delivery of remediation works through the Hoteo River catchment coordinated by The Forest Bridge Trust, supporting 15 landowners to fence and plant riparian strips, wetland areas and bush blocks.</i>	12 remediation projects contracted (\$259,602 granted), of which 4 are completed. Additional 4 projects being negotiated. Landowner contributions are accounted for when projects are completed. Significant time-delay	\$0.270 (\$0.208)	\$0.491 (\$0.017)	\$0.761 (\$0.226)

		impacts of Covid-19 lockdown restrictions in the Auckland area, where this work is being undertaken, resulting in an extension of project timeframes to 30 June 2022, and slower than anticipated project completion.			
Advocacy & Influence			\$0.130 (\$0.073)	\$0.130 (0.025)	\$0.260 (0.099)
K2021-004 Communications Strategy Implementation	<i>Development and maintenance of communications material for the KMR Programme with a focus on website-based and digital print and social media.</i>	KMR branding completed, website established, and key public-facing communications products produced.	\$0.120	\$0.120	\$0.240
Governance, Management & Planning			\$3.994 (\$0.560)	\$2.046 (\$0.509)	\$6.040 (\$1.070)
K2021-005 Kaipara Maurikura	<i>Operational vehicle for the KMR Programme, established as a business unit within the Northland Regional Council, until such time as a statutory co-governance body for the Kaipara is established.</i> <i>The Kaipara Maurikura will employ an estimated 14 staff who will fulfil the leadership, engagement, communications, project management, strategic and administrative roles required to drive remediation work. Budget includes costs of office space, IT, recruitment, and related costs.</i>	Kaipara Maurikura established with Pou Tātaki (General Manager) and 13 full-time staff employed. Business, administration and other systems in place or being developed. Governance needs of the Joint Committee serviced. Office space in NRC offices created. General Covid impacts on recruitment for and establishment of the Kaipara Maurikura.	\$1.100 (\$0.423)	\$1.100 (\$0.423)	\$3.128 (\$0.846)
K2021-006 Governance Costs	<i>Kaipara Moana Remediation Joint Committee costs including Kaipara Uri member fees, venue hire, catering, koha, travel and other associated costs.</i> <i>Note – Kaipara Maurikura staff will provide administrative support for the Joint Committee</i>	Kaipara Moana Remediation Joint Committee held four business meetings and two workshops between July and December 2021. Covid-19 restrictions meant most were held in a digital format.	\$0.000 (\$0.000)	\$0.200 (\$0.040)	\$0.200 (\$0.040)

	(budgeted for separately under K2021-005 above).				
K2021-007 Digital tools for Sediment Reduction Plans and grant funding administration	<i>Development and provision of digital tools to support the KMR Programme and ensure efficient and effective delivery of remediation works.</i>	Contracts negotiated and finalised, and development work underway with: <ul style="list-style-type: none"> • My Community (for SmartyGrants platform) • Media Suite (for Farm Planning / Sediment Reduction Plan tool) <p>However, as at 31 December no invoices paid for work done.</p>	\$0.500 (\$0.000)	\$0.200 (\$0.000)	\$0.700 (\$0.000)
K2020-011 Digital tools – design, preparation and procurement	<i>Project to define digital build requirements for the KMR programme and progress to decision-making by the Joint Committee on provider(s) and contracting for service.</i>	Project completed with Digital Tools Strategy in place, contracts negotiated and finalised with third party providers (refer K2021-007).	\$0.091 (\$0.026)	\$0.000 (\$0.009)	\$0.091 (\$0.034)
K2020-012 Fresh Water Management Tool – Kaipara	<i>Build water quality accounting framework for KMR (Freshwater Management Tool FWMT-Kaipara). Supports investment decision-making, farm plan prioritisation and accounting/reporting on KMR progress in improving water quality.</i>	Design and procurement process undertaken, with contract negotiations near completion with two third-party providers. Some delays due to Covid lockdowns. Build to progress in 2022 and first half 2023.	\$1.270 (\$0.000)	\$0.267 (\$0.034)	\$1.537 (\$0.034)
K2020-015 Land Features – Highly Erodible Land Delineation	<i>Categorisation, delineation and improved understanding, resolution and mapping of erosion terrains and highly erodible land (HEL) by bringing together several resources and data sets already available, with the addition of oblique aerial photography.</i>	Project design, tending and procurement process completed, with contract negotiations near completion. Build to progress in first half 2022.	\$0.260 (\$0.000)	\$0.009 (\$0.000)	\$0.219 (\$0.000)
K2020-016 Wetland Features – Mapping, delineation, and prioritisation	<i>Automate geospatial identification of wetlands greater than 500m² using existing resources and data, with the addition of oblique aerial photography.</i>	Project design, tending and procurement process undertaken. Negotiations underway with provider.	\$0.235 (\$0.000)	\$0.011 (\$0.000)	\$0.196 (\$0.000)

K2020-009 Advisor Training and Accreditation	<i>Develop training and workforce for up to 50 new employment opportunities by 2023.</i> <i>Noting this is a 2-3 year programme, with FY2021-22 focussed on development of training modules and initial tranche of training for remediation advisors. Likely contracting with tertiary providers in the longer-term. Requires further design and approval by Joint Committee.</i>	Training programme for KMR Field Advisors developed, with 5-day on-site training course undertaken. 15 participants, of whom 11 are likely to become KMR Field Advisors. Further training courses developed for February and March 2022.	\$0.200 (\$0.029)	\$0.015 (\$0.000)	\$0.215 (\$0.029)
K2020-002 Kaipara Nursery Strategy (Stage 2)	<i>Provide strategic and technical advice on steps required to implement outcomes approved in the Kaipara Moana Nursery Strategy.</i>	Planting guides, plant lists and other supporting documentation completed. Accreditation process undertaken with 19 nurseries.	\$0.136 (\$0.036)	\$0.010 (\$0.001)	\$0.146 (\$0.037)
K2020-004 Te Paiaka – Native Root Project	<i>Determine the plants most effective for riparian planting (and where on the streambank to plant) to minimise/mitigate streambank erosion.</i>	Data gathering and analysis well progressed, noting however this project has been badly impacted by Covid-19 lockdowns in the Auckland area, requiring an extension to timeframes and budget.	\$0.070 [TBC]	\$0.108 [TBC]	\$0.177 [TBC]
K2020-14 Korero Tuku Iho (Mātauranga Māori Strategy)	<i>Establish an understanding of the contribution of Mātauranga Māori and western science at a level that can be applied to the KMR work program, with a particular focus on bring local environmental knowledge to bear on remediation projects and planning.</i>	KMR contract with Environs Ltd (acting on behalf of Kaipara Uri) includes delivery of this project. Planning and engagement commenced.	\$0.080 (\$0.000)	\$0.023 (\$0.000)	\$0.103 (\$0.000)
K2020-014 The South Kaipara Streams Project – Stage 1	<i>Trial a new digital mapping methodology to assess erosion hotspots in stream networks, with the potential to implement this at a regional scale.</i>	Project completed with methodology, mapping, hot-spot identification and data undergoing peer-review process.	\$0.052 (\$0.047)	\$0.004 (\$0.004)	\$0.56 (\$0.051)
K2021-008 Soil Conservation Strategy	<i>Strategy drawing on existing literature and research to recommend the KMR Programme's approach to management of highly erodible land to reduce sediment loss, including options for retirement under plantation forestry or native, space planting to manage land in pasture, and</i>	Project planning undertaken to progress strategy and policy work in first quarter 2022.	\$0.100 (\$0.000)	\$0.000 (\$0.000)	\$0.100 (\$0.000)

	<i>alternatives land-use activities that generate soil conservation benefits while generating alternative incomes for landowners. The Strategy will inform decisions to provide KMR grants funding support to landowners in these areas.</i>				
	Total Estimated Budget for Year Two (2021/22)		\$10.276	\$9.670	\$19.945
	Six Month Actual		(\$1.406)	(\$1.820)	(\$3.226)

Declaration

This declaration must be completed by the chair of the joint committee.

As a duly authorised representative of the organisation:

- I declare that to the best of my knowledge, the information contained in all sections of this Six Month Report, or supplied by us in support of our Six Month Report is complete, true and correct.
- I declare that I have the authority to sign this Six Month Report and to provide this information.
- I understand that information presented to the Minister for the Environment and Ministry for the Environment is subject to disclosure under the Official Information Act 1982.

Name

Tame Te Rangi

Position

Chair, Kaipara Moana Remediation Joint Committee

Signature

By typing your name in the space provided you are electronically signing this Annual Work Plan.

TITLE: Catchment Reference Groups (Establishment)

ID:

From: Lisette Rawson, Amo - Rauora Kōawa | Catchment Remediation Manager and Willie Wright, Ringa-Hononga Mana Whenua | Mana Whenua Relations Lead

Authorised by Justine Daw, Pou Tātaki, on 17 February 2022
Group Manager:

He Rāpopoto hautū / Executive summary

The Joint Committee has previously considered, and taken decisions on, the criteria and levels of funding for remediation activities in the wider Kaipara Moana catchment led by hapū and community groups who may not be represented by Kaipara Uri entities. The establishment of Catchment Reference Groups to manage this funding was also agreed, and included in KMR's Annual Plan for Year 2 (current year).

This paper summarises previous decisions and seeks approval for an approach to establish Catchment Reference Groups for three river systems (Wairua, Mangakāhia and Hōteao). The intention is to release allocated funding to these groups for use this financial year, with further funding expected to be available in later years, subject to KMR Annual Work Plan approval processes.

In the first instance, we propose a representative from each of the three river systems and a Joint Committee representative (acting as Chair) meet to co-design Terms of Reference for the Catchment Reference Groups, consistent with KMR investment objectives and grant funding criteria. A contract would then be prepared to support each Group to self-organise to assess and fund relevant remediation project proposals, reporting regularly on progress and investment outcomes. Joint Committee approval will be required for any investments that are materially outside agreed grant funding criteria.

Ngā tūtohu / Recommendation(s)

1. That the report 'Catchment Reference Groups (Establishment)' by Lisette Rawson, Amo - Rauora Kōawa | Catchment Remediation Manager and Willie Wright, Ringa-Hononga Mana Whenua | Mana Whenua Relations Lead and dated 16 February 2022, be received.
2. *Note* that the Joint Committee has previously agreed the establishment of Catchment Reference Groups to support remediation activities in the wider Kaipara Moana catchment led by hapū and community groups who may not be represented by Kaipara Uri entities (A1437942).
3. *Note* that funding to support Catchment Reference Groups was approved by the Joint Committee as part of the Year 2 Annual Plan, supported by \$1,160,000 in total project value consistent with KMR investment objectives and Whenua Whānui grant funding criteria (A1437942; and resolution for item 5.2, 15 November 2021).
4. *Agree* to establish three Catchment Reference Groups with the ability to allocate funding for remediation activities in the Wairua, Mangakāhia and Hōteao river systems respectively.

5. Agree that the Kaipara Maurikura will convene a representative from each of the three river systems and a Joint Committee representative (acting as Chair) to co-design Terms of Reference for the Catchment Reference Groups.
6. Agree that associated contracts would allow each Catchment Reference Group to self-organise to assess and fund relevant remediation project proposals in line with the Terms of Reference, reporting regularly to the Maurikura on progress and investment outcomes.
7. Note that Joint Committee approval will be required for any proposed investments that are materially outside of the agreed grant funding criteria.
8. That a report-back on progress to establish the Catchment Reference Group be provided to the Joint Committee in May 2022.

Horopaki / Context

On 17 May 2021, the Joint Committee considered a paper (A1437942) entitled *Draft Kaipara Moana Remediation Programme Year 2 Work Plan*. The paper acknowledged that there were “hapū and marae communities residing within the Kaipara Moana catchments who may not be represented by Kaipara Uri entities. These groups are often involved in and lead local remediation efforts and may wish to participate in KMR-supported remediation work.”

The paper went on to note the following:

“If groups wish to work through a collective ‘Catchment Reference Group’ in each of the three main upper-catchment river systems, then the proposed budget can be used to fund remediation projects in these areas, consistent with KMR investment objectives and grant funding principles. One possibility is for hapū and marae groups to help mobilise landowners in their respective area to take up grant funding in the same way as for Remediation Grants through Sediment Reduction Plans. Some budget will be required to support the development of remediation projects and is unlikely to attract a 50% landowner contribution. It is recommended \$100,000 is set aside for this purpose. It is also recommended staff within Kaipara Maurikura are tasked to engage with hapū and marae communities residing in upper Kaipara Moana catchments. Budget for this would be covered from the Kaipara Maurikura budget”.

The paper continued on to note: *“If remediation grant funding for projects is required above the \$500,000 identified, with approval by the Joint Committee this could be made available through the Remediation Grants through Sediment Reduction Plans funding. It is possible remediation work undertaken through Catchment Reference Groups will extend into Year 3 or later, particularly as work often needs to be undertaken across the calendar year rather than financial year. Exact timeframes will only be known if the approach proceeds and when landowners indicate they are keen to proceed in this way.*

In the final Year 2 Annual Plan, the Joint Committee committed \$1,100,000 in total project value to be allocated equally across three river catchments in the upper Kaipara Moana catchment for remediation activities, consistent with KMR investment objectives and grant funding principles.

The agreed total Year 2 annual budget for the three Catchment Reference Groups is comprised as follows:

Total budget (FY2021-22) \$1,100,000
Crown grant contribution \$500,000
Council contribution \$100,000
Third party/Land-owner contribution \$500,000
(Note – values identified above are exclusive of GST).

In the report titled - 5.2 *Financial Status and Minor Budget Adjustments* for the Joint Committee meeting held on 15 November 2021 (Item 5.2), the Joint Committee subsequently increased this allocation as follows:

\$60,000 [to be transferred] to the budget for Catchment Reference Group Projects. This will help enable marae and other community groups to meet overhead in management expenses for sediment reduction projects (to be met on a 50/50 basis by tracked in-kind contributions),

This brings the total Year 2 annual budget for the three Catchment Reference Groups to:

Total budget (FY2021-22) \$1,160,000
Crown grant contribution \$560,000
Council contribution \$100,000
Third party/Land-owner contribution \$500,000
(Note – values identified above are exclusive of GST).

Tātari me ngā tūtohu / Analysis and advice

Supporting existing groups to continue to engage and complete remediation mahi in the wider Kaipara Moana catchment is important to achieving overall KMR programme outcomes. Local hapū and community groups are often active in planting and restoration of waterways, and have an excellent understanding of their communities and the challenges of their immediate environment.

The earlier Joint Committee papers referred in various places to support for groups 'in inland areas', 'upper catchments' (i.e where headwaters begin, as opposed to northern catchments), and in respect of groups which may not be represented by the Kaipara Uri entities. The papers also emphasised the importance of KMR providing ongoing support for hapū and community groups in their kaitiakitanga of and participation in restoring the mauri of the Kaipara Moana at an operational level.

Given the importance of remediation occurring across a complete river system, from the headwaters to the moana, and that all five rivers in the Kaipara Moana catchment deliver sediment loading into the moana, we are recommending the establishment of three Catchment Reference Groups with the ability to allocate funding to remediation projects across the Wairua, Mangakāhia River and Hōteō river systems, consistent with KMR grants funding criteria. This meets the intent of the original Joint Committee decision and is similar to the approach taken to date with third party providers working in partnership with the KMR such as Fonterra and the Forest Bridge Trust.

Several groups who are not represented by the Kaipara Uri entities are actively working in the wider Kaipara Moana catchment, having done so over many years. Such groups are potentially eligible for Catchment Reference Group project funding. Some of the groups have already been engaging with KMR's new Pūtohu-Hononga Hapū and Hāpori/Community and Hapū Engagement Advisor on expressions of interest for Whenua Whānui Fund funding, and some are developing applications. We consider it important that eligible groups have the opportunity to elect which KMR funding stream they wish to apply under, once the Catchment Reference Groups are established. However, care needs to be taken that projects from these groups are not further delayed by a decision to convene the Catchment Reference Groups.

There is also some urgency to contract and invest the allocated funding so that it can support the ongoing scaling up of KMR remediation activities this year, particularly in advance of the coming winter planting season. As highlighted in the accompanying *Surge Planting Initiative* paper, time is of the essence if the programme is to maximise winter planting outcomes. This proposal is one part of several mitigation actions proposed by the Maurikura to accelerate KMR programme delivery.

In order to meet these objectives, in the first instance, we propose that a representative from each of the three river systems and a Joint Committee representative (acting as Chair) be approached and invited to meet (virtually or in person depending on COVID-19 settings) to co-design a high-level

Terms of Reference for the Catchment Reference Groups, to ensure that each Catchment Reference Group can operate in ways that are consistent with KMR investment objectives and grant funding criteria, while reflecting appropriate concepts that recognise the mana of hapū and community groups in their kaitiakitanga of their local river system.

Once the Terms of Reference are agreed, a contract would then be prepared to support each Group to self-organise to assess and fund relevant remediation project proposals in line with the Terms of Reference. Regular reporting to the Maurikura on progress and investment outcomes would be required under the contract, as is required in contracts with other providers working in partnership with the KMR programme. We propose that Joint Committee approval will be required for any investments that are materially outside of the agreed grant funding criteria.

Notwithstanding the need for genuine engagement, it is in the collective interest that the Catchment Reference Groups are contracted before the end of April 2022. We recommend that while the Maurikura will support the process until contracting is complete, then move to an ongoing engagement and monitoring role, the Groups are self-organised following establishment, supported by an initial funding investment of \$20,000 per Group.

Considerations

1. Aromātai whāinga haumi mō te oranga / Wellbeing Investment objectives and assessment

By funding well-established groups, KMR can support groups already taking action, and with a proven track record, to accelerate remediation activities in line with KMR criteria, enabling them to 'get on with it'. The proposed approach involving co-design and delegated decision-making to each river system would enable wide oranga outcomes, as well as taiao outcomes.

2. Ngā ritenga take pūtea / Financial implications

Aside from the \$1,160,000 already in budget, there are no immediate financial implications to the proposal. Sound contract management will ensure that the contracted entities achieve their deliverables. In future years, we would propose to run further funding rounds through the Catchment Reference Groups, but this would be subject to normal annual planning processes and approvals, including from the Ministry for the Environment as contractor/investor.

3. Ngā hiranga me ngā hononga / Significance and Engagement

In relation to section 79 of the Local Government Act 2002, the decisions arising from this report are considered to be of low significance when assessed against Northland Regional Council's significance and engagement policy. This does not mean that this matter is not of significance to tangata whenua and/or individual communities, but that the joint committee is able to make these decisions without undertaking further consultation or engagement.²

4. Ngā tūraru me ngā mauru / Risks and mitigation

The approach proposed is similar to the contractual arrangements reached with Fonterra and Forest Bridge Trust. In addition, the Whenua Whānui Fund approach caters for the funding of community groups with established legal structures. Both approaches mitigate any perceived risks around the use of taxpayer funds and accountabilities.

5. Ngā whāinga mō āmuri / Next steps

² This joint committee operating under the Local Government Act which requires a significance and engagement policy (which identifies when matters require special consultation with tangata whenua and the community) and to have regard to that policy when making decisions. As the administrative support for the joint committee is provided by the Northland Regional Council, it is that council's Significant and Engagement Policy that will apply to joint committee decision making.

We recommend that, if agreed, that Kaipara Maurikura move swiftly to communicate the intent to establish three Catchment Reference Groups with the ability to allocate agreed funding across the Wairua, Mangakāhia and Hōteu, River systems.

The Kaipara Maurikura would then propose to convene an initial group of trusted local leaders, comprising a representative from each river system and a Joint Committee representative (Chair), as soon as practicable, to co-design Terms of Reference and processes for funding allocation, consistent with KMR investment objectives and grant funding principles.

A report-back would be provided to the Joint Committee on progress to establish the Kaipara Moana Catchment Reference Groups in May 2022.

Ngā tapirihanga / Attachments

Nil

TITLE: Surge Planting Initiative (Winter 2022)

ID:

From: Duncan Kervell, Kaipara Maurikura Land Management Specialist and Lisette Rawson, Amo - Rauora Kōawa | Catchment Remediation Manager

Authorised by Justine Daw, Pou Tātaki, on
Group Manager:

He Rāpopoto hautū / Executive summary

Most Kaipara Moana Remediation (KMR) activities have narrow seasonal windows, with the winter period being most critical for planting. All remediation activities require an approved Sediment Reduction Plan (SRP), completion of which is currently constrained by the limited (but growing) number of KMR approved Field Advisors.

To increase planting this winter (May to late August 2022) and mitigate ongoing KMR delivery risks, including those relating to COVID-19, approval is sought for an immediate 'Surge Planting' initiative. The proposed approach is to use Planting Plans (one of two central modules of every Sediment Reduction Plan) that meet KMR criteria as the basis for approval to begin planting on properties that are 'planting ready'. Engagement with a landowner to complete a full Sediment Reduction Plan, including recommendations for fencing projects, will be completed before the scheduled KMR post-planting quality assurance audit (within six months of planting). A satisfactory audit is required under current KMR arrangements before landowner grant payments are made.

The proposed 'Surge Planting' initiative is expected to lift delivery against programme and contract outcomes (*see agenda item on the Six Month Report*), while supporting accredited nurseries who would otherwise run the risk of carrying unpurchased stock. Staff are also progressing options to deliver local employment benefits through the creation and funding of 'Surge Planting' teams.

Ngā tūtohu / Recommendation(s)

1. That the report 'Surge Planting Initiative (Winter 2022)' by Duncan Kervell, Kaipara Maurikura Land Management Specialist and Lisette Rawson, Amo - Rauora Kōawa | Catchment Remediation Manager and dated 16 February 2022, be received.
2. *Note* that many Kaipara Moana Remediation (KMR) activities have narrow seasonal windows, with the winter period critical for planting.
3. *Note* that a number of landowners in the catchment are 'planting ready', but do not yet have an approved KMR Sediment Reduction Plan, running the risk of a second winter of lower-than-planned planting rates.
4. *Agree* in principle that Planting Plans that meet KMR criteria can trigger approval to commence planting on 'planting ready' properties, with a view to significantly lifting planting rates and landowner engagement this winter.
5. *Agree* that Full Sediment Reduction Plans for these properties must be completed by the time of the KMR post-planting quality assurance visit, which is a pre-condition of payment of any associated KMR landowner grants.
6. That a report-back on progress in developing a winter planting pipeline be provided to the Joint Committee in advance of the Joint Committee workshop in May 2022.
7. *Note* that if the JC approves this approach in principle, work will be undertaken with co-funding partners and investors (Ministry for the Environment, Auckland Council,

Northland Regional Council) to ensure they are comfortable with the proposed approach and make any adaptations, as needed.

Horopaki / Context

Many Kaipara Moana Remediation (KMR) planting activities have a narrow predetermined seasonal window, with the winter period critical for planting to ensure plant survival. Typically, riparian areas can be planted in the Kaipara catchment between June and July, with wetlands providing the opportunity for a longer planting season (May-August).

Currently, all KMR remediation activities are dependent on an approved Sediment Reduction Plan (SRP) (or Fonterra Tiaki Farm Environment Plan, which provides equivalent provisions). SRPs must be developed with the landowner by KMR Field Advisors then recommended for approval by senior Kaipara Maurikura staff.

Due to COVID-19 border closures and lockdowns, and slower than anticipated recruitment into the Kaipara Maurikura (the Maurikura), KMR Field Advisor training courses have been delayed. The Maurikura took action to prioritise and run two Field Advisor training courses in November 2021 and February 2022, as well as a focused training day in early February to facilitate greater mana-whenua participation in a forthcoming training course (8-11 March). However, the number of fully approved and operational KMR Field Advisors remains lower than desirable (seven at the time of writing).

Even with an expected 13 additional Field Advisors trained by 18 February, many will need ongoing operational support from the Maurikura before they can confidently operate independently. The vaccination mandate that requires all directly contracted Field Advisors to be fully vaccinated from 1 February 2022 has further complicated our ability to attract, train and accredit Field Advisors.

Tātari me ngā tūtohu / Analysis and advice

A number of landowners in the Kaipara Moana catchment are 'planting ready' with riparian or wetland areas already fenced off, but do not yet have a SRP in development or approved. Current capacity to prepare SRPs, and the requirement that an SRP is approved before KMR can fund planting, increases the risk of a second winter (May-July 2022) of lower-than-planned planting rates.

While the Maurikura is firmly focused on planned programme delivery to the greatest extent possible in an Omicron-affected operating environment, a reduced winter planting season would not only risk KMR not meeting delivery targets this year, it would also affect *next year's* (Year 3) programme delivery given the winter planting season goes through to August 2022.

To mitigate this operational delivery risk, the proposal is to increase planting activity through a Surge Planting initiative this winter. The proposed approach is to develop Planting Plans (a central module of every SRP) to 'front load' planting on properties that are 'planting ready' (described on the following page). This would be undertaken in line with the current KMR criteria, contracting and payment processes, which only pay out grants funding on satisfactory post-planting audits. Noting also that very little fencing work is undertaken over winter months, and therefore an initial focus on planting will not impede fencing that can be undertaken later in 2022 and early 2023.

Full SRPs will need to be completed within 6 months of planting (i.e. by the time of the scheduled KMR post-planting quality assurance visit) to enable the landowner to unlock grant payments. Other remediation activities such as fencing would still need to await a full and approved SRP.

The proposed Surge Planting initiative is expected to lift delivery of riparian and wetland areas planted and protected, which is one of the key Jobs for Nature Focus Area Indicators for the KMR programme. It will also support KMR-accredited nurseries who have stock available (based on a

recent KMR stocktake). In addition, staff will explore options to enhance local employment benefits through the creation and funding of 'Surge Planting' teams.

On specific outcomes, the Surge Planting initiative aims to:

- Deliver up to 500,000 plants in the ground over the planting season (equivalent to 100ha, or 100km of waterway planted at 5m either side)
- Reach an anticipated 70-200 'planting ready' landowners, depending on the size of the plantings
- Fast-track ('front load') the planting element of pipeline SRP, with a full SRP for participating landowners delivered before the 6-months-post-planting KMR audit.

To achieve this, the proposal is to:

- Target landowners who have
 - already fenced waterways/wetland areas suitable for planting, and
 - planting areas that can be prepared for planting between February and this winter i.e. not hugely weedy.
- Provide planting grants based on existing KMR criteria for landowners who only require a Planting Plan component of an SRP, allowing planting to commence, rather than completing a full SRP (which is a combination of planting and fencing recommendations). These landowners will become part of the KMR (or Fonterra/other, as relevant) pipeline to receive a full SRP (or Tiaki Farm Environment Plan (FEP), as relevant) over time
- As per current KMR programme delivery, work with landowners to provide field advice and other guidance, and develop Planting Plans, as well as providing 50% of costs of planting establishment (*note this equates to ~ \$10,000 per hectare in costs to KMR for plants, planting and site preparation*)
- KMR will assist in the co-ordination and organising of plants for landowners, sourced from the closest accredited nursery with suitable stock. (*note all plants from accredited KMR nurseries are eco-sourced*). Staff will explore whether this could include a delivery/planting role for Kaipara Uri and other mana whenua.

The Surge Planting initiative is achievable as:

- A recent KMR accredited nursery stocktake has indicated there is plenty of accredited stock (if limited species), which indicates the goal of planting up to 500,000 seedlings is realistic;
- KMR has accredited planting teams, should landowners require them. It is estimated that if 100ha is planted over 150 individual contracts with landowners, that would equate to roughly 1300 labour days, needing 16 people for 16 weeks for the 4-month planting season;
- While there are currently 7 KMR Field Advisors currently working on SRPs, the second training session for KMR Field Advisors is taking place and will likely conclude with at least half (based on previous work experience) able to move forward to contract stage and the delivery of full SRPs. Delivery of the estimated number of planting plans is considered feasible for a cohort this size, and the Maurikura would secure an independent expert to review the quality of planting plans; and
- Aside from the landowners that have already submitted an expression of interest to KMR, there are opportunities to engage with landowners that meet the criteria in the section above via the Waimā, Waitai, Waiora project in Northland, the Fonterra Tiaki project (Northland), the QEII National Trust, and Northland Regional Council and Auckland Council landowners that have previously been engaged through council channels.

The proposed Surge Planting approach will be evaluated following the planting season and whether this should be continued in future years. If this is a one-off initiative, we consider it does not present any equity issues with landowners in future years. Ultimately, all landowners will require an SRP (or equivalent Farm Environment Plan) in order to receive KMR funding. The key difference with this initiative is that where landowners are ready to plant this year, they can plant relevant areas prior to completion of a full SRP.

In line with KMR's bicultural settings, part of our vision for the Surge Planting initiative is to:

- Promote planting as part of Matariki, with potential peak planting week coinciding with the first national Matariki public holiday (24 June 2022). However, COVID-19 settings may limit this opportunity
- Coordinate/encourage planting days as possible with marae, Enviroschools, community care groups, etc., noting any promotions or events will need to be consistent with COVID restrictions.

Beyond the obvious benefits of accelerating KMR programme delivery, we consider the Surge Planting initiative will deliver a suite of wider benefits, including:

- Increased community visibility and credibility of KMR
- Improved relationships with landowners for further planting and partnership in future years
- Strengthened relationships with nurseries, demonstrating the benefits of accreditation and affiliation with the programme
- Simpler than a full SRP for recently trained Field Advisors to build skills and confidence;
- Testing KMR systems and processes at scale
- Strengthened relationships with managers of multiple Māori owned land, through KMR building trust and demonstrating support for positive engagement and ongoing partnership
- Potential for new employment opportunities for Uri/Mana Whenua to form or join KMR Surge Planting teams to augment existing (accredited) planting team capacity in the catchment.

Considerations

1. Aromātai whāinga haumi mō te ora / Wellbeing Investment objectives and assessment

By funding 'planting ready' landowners, KMR will support the full range of investment objectives – environmental, social and economic. In addition, if 'Surge Planting teams' from local Kaipara Uri / mana whenua can be put together to support winter planting efforts, then employment benefits would also accrue from the proposed initiative.

2. Ngā ritenga take pūtea / Financial implications

Aside from up-front investment to confirm planting orders (noting this is already provided for under current budget levels), there are no immediate financial implications to the Surge Planting proposal. The usual scheduled post-planting audits will identify and rectify any issues identified with plants planted, so as to provide assurance and rigour in terms of the investment.

3. Ngā hiranga me ngā hononga / Significance and Engagement

In relation to section 79 of the Local Government Act 2002, the decisions arising from this report are considered to be of low significance when assessed against Northland Regional Council's significance and engagement policy. This does not mean that this matter is not of

significance to tangata whenua and/or individual communities, but that the joint committee is able to make these decisions without undertaking further consultation or engagement.¹

4. Ngā tūraru me ngā mauru / Risks and mitigation

A reduced winter planting season will risk the KMR not meeting delivery against targets for this year and the next year. Not meeting these targets may affect confidence in the programme and goodwill towards it, resulting in reputational risk and increasing risks to leveraging the current investment to attract third party investments and opportunities. Taking action to mitigate the risks identified will also honour the intent of the KMR programme and best respond to the needs and aspirations of MOU partners, as well as Kaipara Uri and wider local nurseries.

Using the current KMR grants criteria, contracting process, quality assurance/audit process, and Planting Plan templates and process will reduce risks in respect of rolling out a new initiative at pace. An additional process step to further reduce risk is to have all Planting Plans reviewed by an independent planting expert before the Maurikura staff make a recommendation to approve commencement of planting activities. This adds a further level of assurance in respect of the fit to KMR criteria of the proposed planting activities. As is already the case under current processes, payment of grant funding to landowners will only be made on receipt of a satisfactory 6-month post-planting audit, as well as a satisfactorily completed Sediment Reduction Plan.

5. Ngā whāinga mō āmuri / Next steps

If the JC approves this approach in principle, work will be undertaken with co-funding partners and investors (Ministry for the Environment, Auckland Council, Northland Regional Council) to ensure they are comfortable with the proposed approach and adapt as needed.

If agreed, staff will move swiftly to communicate the Surge Planting initiative to landowners and partners, and continue work to identify and contact landowners known to be or expected to be ready for planting.

Draft contracts have been prepared to secure the services of an expert contractor to provide independent review of Planting Plans, and assurance that the landowners are 'planting ready'. This contractor will also take the lead on liaising with accredited nurseries to both ensure (and if needed propose amendments to) the Planting Plan includes plants that are available – that is, which are 'on the shelf' now, and pre-order plants needed for the winter planting season.

Staff are scheduled to host a Nursery Accreditation hui on 24 February 2022, and propose to use this engagement to ensure the sector is aware of and ready to support this initiative.

The Maurikura will also engage Ministry for Social Development and potentially other partners through the Employment Hub on the feasibility of additional (funding) support to enable Kaipara Uri or mana whenua Surge Planting teams to augment existing (accredited) planting team capacity in the region. This may include using marae-based teams overseen by an accredited kaitiaki or accredited supplier/partner. Staff will engage proactively with the MOU parties and Senior Officials Oversight Group members to identify potential candidates for Surge Planting team employment, and are scheduled to talk to Environs Ltd on this matter.

Staff will also explore other potential avenues to support 'gig employment' in Surge Planting teams. In particular, we are looking to find additional funding to support free delivery of plants and / or planting for landowners to drive uptake.

The Joint Committee will be provided an update progress, both through regular Pou Tātaki reporting, and with a formal report-back in May 2022.

Ngā tapirihanga / Attachments

Nil

TITLE: Pou Tātaki Report

ID:

From: Justine Daw, Pou Tātaki

Authorised by Justine Daw, Pou Tātaki, on 17 February 2022
Group Manager:

He Rāpopoto hautū / Executive summary

This update report by the Pou Tātaki, Justine Daw, provides an overview of the Kaipara Moana Remediation (KMR) work programme to the Kaipara Moana Remediation Joint Committee (Joint Committee) for information.

Ngā tūtohu / Recommendation(s)

1. That the report 'Pou Tātaki Report' by Justine Daw, Pou Tātaki and dated 16 February 2022, be received.

Horopaki / Context

The Joint Committee last met in formal hui on 13 December 2021. This update report provides information on developments in the KMR programme and the Kaipara Maurikura since then.

The reporting (*see over page*) is structured by six new work programme areas, around which the Maurikura staff are consolidating work planning, delivery and monitoring:

- The first two of these areas (*Thriving Maurikura, Effective Governance*) largely face inwards, with a focus on ensuring an effective and well-managed Maurikura, and how it supports governance of the KMR programme.
- The second two areas (*Programme Delivery, Digital Tools*) focus on planning, delivery and monitoring of major projects, with a focus on activities relevant to sediment reduction, as well as digital tool development.
- The last two programme areas (*Engagement and Partnership, Strategy and Opportunities*) are largely externally-facing and focused on future directions, outreach and partnerships, including those that bring in new third party investments to support restoration activity by landowners participating in the Kaipara Moana Remediation programme.

The Kaipara Maurikura will be refining this reporting view as the Maurikura systems and processes develop, and would welcome any feedback from the Joint Committee on the new approach.

Summing up – An Overview of the Reporting Period

As discussed at the 14 February Joint Committee workshop, this reporting period has seen the benefits of 'fresh legs' and a larger team. The Maurikura has been able to accelerate KMR programme delivery, with a major focus on bringing forward delivery of Sediment Reduction Plans, and associated remediation activities this financial year. We are also beginning to re-engage externally more systematically. While more is to be done, the trajectory is positive, with others providing positive feedback on our delivery over the past two months. As time allows, we continue to explore a small number of potential high-value, high-impact third-party investment opportunities.

Tātari me ngā tūtohu / Analysis and advice

Thriving Maurikura	<p>The Maurikura is now close to full staffing at 13 (including 3 secondees), with an offer made to a new Contracts Manager. 1 position remains vacant, with a needs assessment due to Quarter 2 to ensure that this role meets ongoing critical capability needs.</p> <p>Induction is complete for all but 1 of the Maurikura staff. While marae protocol training is planned for mid-March, we are likely to defer this in view of the COVID-19 settings.</p> <p>In line with Northland Regional Council (NRC) policy, the Maurikura is now operating in two distinct 'work bubbles' to manage COVID-19 impacts while ensuring business continuity. People leaders are supporting well-being in a number of ways, as the Maurikura increasingly work from home, with an expectation this will be the norm by the end of February or so.</p>
Effective Governance	<p>An Action Tracker and Forward Workplan have been developed to better enable responsiveness to Joint Committee decision-making.</p> <p>In line with feedback, we are now moving to quarterly meetings with the Senior Officials Oversight Group, supplemented by more regular, direct communications.</p>
Programme Delivery	<p><i>Sediment Reduction Plans</i></p> <p>Key templates, guides and quality assurance processes were finalised to support scaling up of delivery of Sediment Reduction Plans (Plan template, Field Advisor Step-by-Step Guide, Planting List, Field Advisor Competency Framework).</p> <p>~90% of the landowners who have registered interest in the KMR programme have now been allocated to Field Advisors to engage, beginning the Sediment Reduction Plan process.</p> <p><i>Field Advisor training & development</i></p> <p>Two more Field Advisor training courses were run (40 people). A Field Advisor introduction was run to engage hapū kaitiaki (7 may register for the 4th Field Advisor Training course in March). We are engaging with Chevon Horsford (Mana Whenua representative, National Freshwater Farm Plan team) to put Te Ao Māori at the heart of our Field Advisor training programme.</p> <p><i>Grant-related activity</i></p> <p>A draft Whenua Whānui Fund contract has been developed and is currently being reviewed. 10 potential Whenua Whānui Fund groups were engaged with, with 5 additional Whenua Whānui Fund proposals now being prepared by local groups.</p> <p><i>Nursery accreditation & development</i></p> <p>Evaluation of 19 nurseries expressing interest in becoming KMR accredited nurseries is now complete, with 15 approved for accreditation and supply of plants to KMR-funded landowners. Planning is well progressed for a Nursery Hui in late February in Te Hana to engage and support the recently accredited nurseries. We are now 'pivoting' it to be online, given Omicron impacts.</p> <p>On 23 December, KMR signed a contract to further develop Kaipara Uri nurseries.</p> <p><i>Workforce Development</i></p> <p>We are engaging with Fonterra and Reconnecting Northland to discuss potential employment partnerships with KMR, as well as exploring a potential opportunity relating to Three Waters.</p> <p>The NZ Association of Resource Managers is exploring with KMR potential delivery of training and professional development for both Maurikura staff and Field Advisors</p>
Digital Tools	<p>Development of key digital tools is well underway, with progress this month as follows:</p>

	<ul style="list-style-type: none"> • The SmartyGrants (grant management system) prototype is in user acceptance testing. • A kick-off meeting for MediaSuite (the project to develop a freshwater planning tool) was held on 20 December, with key stakeholders now engaged. • The Terms of Reference been finalised for a Technical Reference Group to support and provide assurance as the KMR Digital Tools are developed. The Group will convene soon. • Via Auckland Council, we have engaged a project manager with prior experience of the Council's Freshwater Management Tool (FWMT), to support delivery of the KMR-FWMT. • Procurement processes are being progressed to improve spatial (locational) identification of high-risk Eroding Land Features and Wetland areas with high remediation potential. • Peer review has been commissioned of the South Kaipara Streams project report, which aims to identify areas of high risk of stream bank erosion.
Engagement & Partnership	<p>Work to lift KMRs' external engagement has received good feedback, with progress as follows:</p> <ul style="list-style-type: none"> • The KMR website is now fully operational, with usage metrics showing wide readership. • Two Pānui were issued to lift information to landowners, hapū and other groups. • We engaged with 10 potential Whenua Whānui applicant groups in the period. • We engaged with 8 current delivery partners and 42 potential suppliers in the period. • Building on IKHMG models, planning is in train to deliver quarterly marae-hosted hui, Partnership Forum meetings, public engagement hui across Kaipara catchment. • Media content was developed to respond to a Mahurangi Matters story on the Hōteō. • Work continued to finalise a KMR video outlining KMR's work and vision (due 1 March). • New work commenced to develop a KMR social media presence (due March 2022). • Planning for an early March Hui with the Rural Professionals Network about KMR.
Strategy & Opportunities	<p>Strategy Development is recommencing in the reporting period as follows:</p> <ul style="list-style-type: none"> • <i>Mātauranga Māori Strategy</i>: Discussions are ongoing, with a next step to contract a specialist Māori advisor, who will lead writing and development of the Strategy, with implementation of this Strategy a clear priority for KMR. • <i>Soil Conservation Strategy</i>: Early work has begun to scope this strategy as part of wider KMR work programme development. We expect to have internal discussions on purpose, scope, priority and timing over the next month. We propose to explore early thinking on this and other issues which are key to KMR's future strategic direction at the Joint Committee workshop in March as an early input to the Year 3 Annual Plan. <p>While the present need to focus on accelerating programme delivery and building key process/systems means new opportunities are not yet a focus for KMR, we are exploring direct approaches to engage on new opportunities assessed to deliver high potential benefit:</p> <ul style="list-style-type: none"> • Third party international investment in seedbanking facilities to support delivery under the Kaipara Uri nursery contract. • An Innovation Fund application led by other entities to explore pilot development of a regional carbon farm asset to generate a long-term revenue stream for landholders in the region, and incentivise land conversion to native planting. • Potential synergies between KMR and the Kaihu Valley Trail programme. • An application to the Taituarā Local Government Excellence Awards (TBC). • Potential partnership with QE2 Trust in relation to a new QE2 conservation programme.

Ngā tapirihanga / Attachments

Nil