

Northland Regional Council Minutes

Meeting held in the Council Chamber
36 Water Street, Whangārei
on Tuesday 28 June 2022, commencing at 10.30am

Tuhinga/Present:

Chairperson, Penny Smart

Councillors:

Terry Archer

Justin Blaikie

Jack Craw

Colin Kitchen

Amy Macdonald

Marty Robinson

Rick Stolwerk

Joce Yeoman (*via audio-visual link*)

I Tae Mai/In Attendance:

Full Meeting

Independent Financial Advisor (*via audio-visual link*)

Tumuaki - Chief Executive Officer

Pou Tiaki Taiao - GM Environmental Services

Pou Whakaritenga - GM Regulatory Services

Pou Tiaki Hapori – GM Community Resilience

Pou Tiaki Pūtaiao – GM Biosecurity

Policy Specialist (*via audio-visual link*)

Governance Specialist

Part Meeting

Financial Accountant (x2)

Management Accountant (*via audio-visual link*)

Assistant Management Accountant

Planning and Policy Manager

Corporate Strategy Manager

Strategic Projects and Facilities Manager

Resource Management – Strategic Policy Specialist

Planning and Reporting Officer

Economist

Economic Policy Advisor

The Chair declared the meeting open at 10.33am and proceedings commenced with housekeeping instructions and then the Tauāki a roto by full council.

Ngā whakapahā/Apologies (Item 1.0)

There were no apologies.

Nga whakapuakanga/Declarations of Conflicts of Interest (Item 2.0)

It was advised that councillors should make declarations item-by-item as the meeting progressed.

Confirmation of Minutes - Council Meeting 24 May 2022 and Annual Plan Deliberations 24 May 2022 (Item 5.1)

Report from Chris Taylor, Governance Specialist

Moved (Stolwerk/Macdonald)

That the minutes of the council meeting held on 24 May 2022 and the Annual Plan Deliberations held on 24 May 2022 be confirmed as a true and correct record.

Carried

Receipt of Action Sheet (Item 5.2)

Report from Chris Taylor, Governance Specialist

Moved (Blaikie/Robinson)

That the action sheet be received.

Carried

Secretarial Note: In relation to Action 6502 it was advised that the Regional Software Holdings Limited (RSHL) Statement of Intent (SOI) had been substantially rewritten since the draft was presented to council. The RSHL Board had approved the SOI subject to changes agreed at the board meeting. Council would be provided the final SOI in due course and retained the ability to object (in accordance with Schedule 8 of the Local Government Act 2002).

Financial Report to 31 May 2022 (Item 6.1)

Report from Vincent McColl, Financial Accountant and Taka Skipwith, Financial Accountant

Moved (Craw/Kitchen)

That the report 'Financial Report to 31 May 2022' by Vincent McColl, Financial Accountant and Taka Skipwith, Financial Accountant and dated 14 June 2022, be received.

Carried

Secretarial Note:

- *Given the heightened volatility of the markets, it was acknowledged that the end of year financial summation was needed to obtain a true understanding of council's financial position.*
- *Item 7.1 'Rates for the year 1 July 2022 to 30 June 2023' was addressed following Items 7.2 'Adoption of Annual Plan 2022/23' and 'Adoption of User Fees and Charges 2022/23' in accordance with legal advice.*

Rates for the year 1 July 2022 to 30 June 2023 (Item 7.1)

Report from Casey Mitchell, Management Accountant; Kim Harvey, Assistant Management Accountant and Shivam Shivam, Planning and Reporting Officer

Moved (Craw/Kitchen)

1. That the report 'Rates for the year 1 July 2022 to 30 June 2023 by Casey Mitchell, Management Accountant; Kim Harvey, Assistant Management Accountant and Shivam Shivam, Planning and Reporting Officer and dated 9 May 2022, be received.
2. That council notes that it has had regard to section 100T of the Biosecurity Act 1993 and confirms that its analysis of Section 100T of the Biosecurity Act 1993, as included in the Long Term Plan 2021-2031, remains appropriate in relation to setting the Pest Management Rate for 2022-2023.
3. That the Northland Regional Council resolves to set the following rates under the Local Government (Rating) Act 2002 (LGRA) for the financial year commencing 1 July 2022 and ending 30 June 2023:

a. Targeted council services rate

A targeted rate as authorised by the LGRA. The rate is calculated on the total projected capital value, as determined by the certificate of projected valuation of each constituent district in the Northland region. An additional \$1.73 (including GST) per each rateable separately used or inhabited part (SUIP) of a rating unit is to be assessed across the Whangārei constituency to provide funding for the ongoing maintenance of the Hātea River Channel. The rate is differentiated by location in the Northland region and assessed as a fixed amount per each rateable separately used or inhabited part (SUIP) of a rating unit in the Far North and Whangārei districts, and on each rateable rating unit (RU) in the Kaipara district. The rate is set as follows:

	<u>Including GST</u>
Far North District	\$140.02 per SUIP
Kaipara District	\$169.14 per RU
Whangārei District	\$158.26 per SUIP

The Whangārei District targeted council services rate amount of \$158.26 (including GST) per SUIP **includes** funding for the Hātea River Channel amount of \$1.73 (including GST).

b. Targeted land and freshwater management rate

A targeted rate as authorised by the LGRA. The rate is assessed on the land value of each rateable rating unit in the region. The rate is set per dollar of land value. The rate per dollar of land value is different for each constituent district because the rate is allocated based on projected land value, as provided for in section 131 of the LGRA. The rate is set as follows:

	<u>Including GST</u>
Far North District	\$0.0003835 per dollar of land value
Kaipara District	\$0.0003565 per dollar of land value
Whangārei District	\$0.0002780 per dollar of land value

c. Targeted pest management rate

A targeted rate as authorised by the LGRA. The rate is calculated on the total projected capital value, as determined by the certificate of projected valuation of each constituent district in the Northland region. The rate is a fixed amount, differentiated by location in the Northland region. The rate will be assessed on each rateable separately used or inhabited part (SUIP) of a rating unit in the Far North and Whangārei districts, and each rateable rating unit (RU) in the Kaipara District. The rate is set as follows:

	<u>Including GST</u>
Far North District	\$71.77 per SUIP
Kaipara District	\$86.69 per RU
Whangārei District	\$80.23 per SUIP

d. Targeted flood infrastructure rate

A targeted rate as authorised by the LGRA. The rate is a fixed amount assessed on each rateable separately used or inhabited part (SUIP) of a rating unit in the Far North and Whangārei districts, and each rateable rating unit (RU) in the Kaipara District. The rate is set as follows:

	<u>Including GST</u>
Far North District	\$33.24 per SUIP
Kaipara District	\$33.24 per RU
Whangārei District	\$33.24 per SUIP

e. Targeted emergency and hazard management rate

A targeted rate as authorised by the LGRA. The rate is calculated on the total projected capital value, as determined by the certificate of projected valuation of each constituent district in the Northland region. The rate is a fixed amount, differentiated by location in the Northland region. The rate will be assessed on each rateable separately used or inhabited part (SUIP) of a rating unit in the Far North and Whangārei districts, and each rateable rating unit (RU) in the Kaipara District. The rate is set as follows:

	<u>Including GST</u>
Far North District	\$40.15 per SUIP
Kaipara District	\$48.50 per RU
Whangārei District	\$44.88 per SUIP

f. Targeted emergency services rate

A targeted rate as authorised by the LGRA. The rate is a fixed amount assessed on each rateable separately used or inhabited part (SUIP) of a rating unit in the Far North and Whangārei districts, and each rateable rating unit (RU) in the Kaipara District. The rate is set as follows:

Including GST

Far North District	\$11.60 per SUIP
Kaipara District	\$11.60 per RU
Whangārei District	\$11.60 per SUIP

g. Targeted regional sporting facilities rate

A targeted rate as authorised by the LGRA. The rate is a fixed amount assessed on each rateable separately used or inhabited part (SUIP) of a rating unit in the Far North and Whangārei districts, and each rateable rating unit (RU) in the Kaipara District. The rate is set as follows:

	<u>Including GST</u>
Far North District	\$16.60 per SUIP
Kaipara District	\$16.60 per RU
Whangārei District	\$16.60 per SUIP

h. Targeted regional economic development rate

A targeted rate as authorised by the LGRA. This rate is assessed on the land value of each rateable rating unit in the region. The rate is set per dollar of land value. The rate per dollar of land value is different for each constituent district, because the rate is allocated based on projected land value, as provided for in section 131 of the LGRA. The rate is set as follows:

	<u>Including GST</u>
Far North District	\$0.0000260 per dollar of land value
Kaipara District	\$0.0000242 per dollar of land value
Whangārei District	\$0.0000188 per dollar of land value

i. Targeted Whangārei transport rate

A targeted rate as authorised by the LGRA. The rate is a fixed amount assessed on each rateable separately used or inhabited part of a rating unit (SUIP) in the Whangārei District. The rate is set as follows:

	<u>Including GST</u>
Whangārei District	\$38.47 per SUIP

j. Targeted Far North transport rate

A targeted rate as authorised by the LGRA. The rate is a fixed amount assessed on each rateable separately used or inhabited part of a rating unit (SUIP) in the Far North District. The rate is set as follows:

	<u>Including GST</u>
Far North District	\$8.79 per SUIP

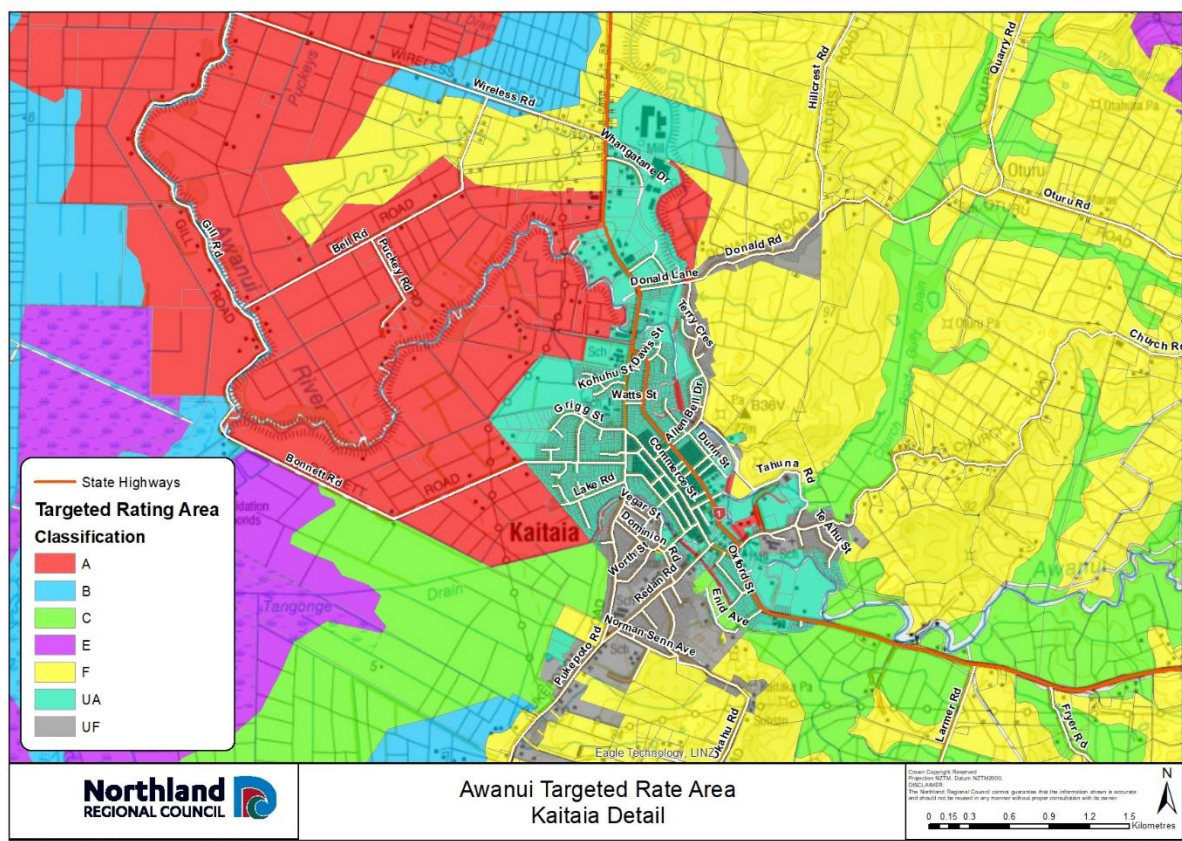
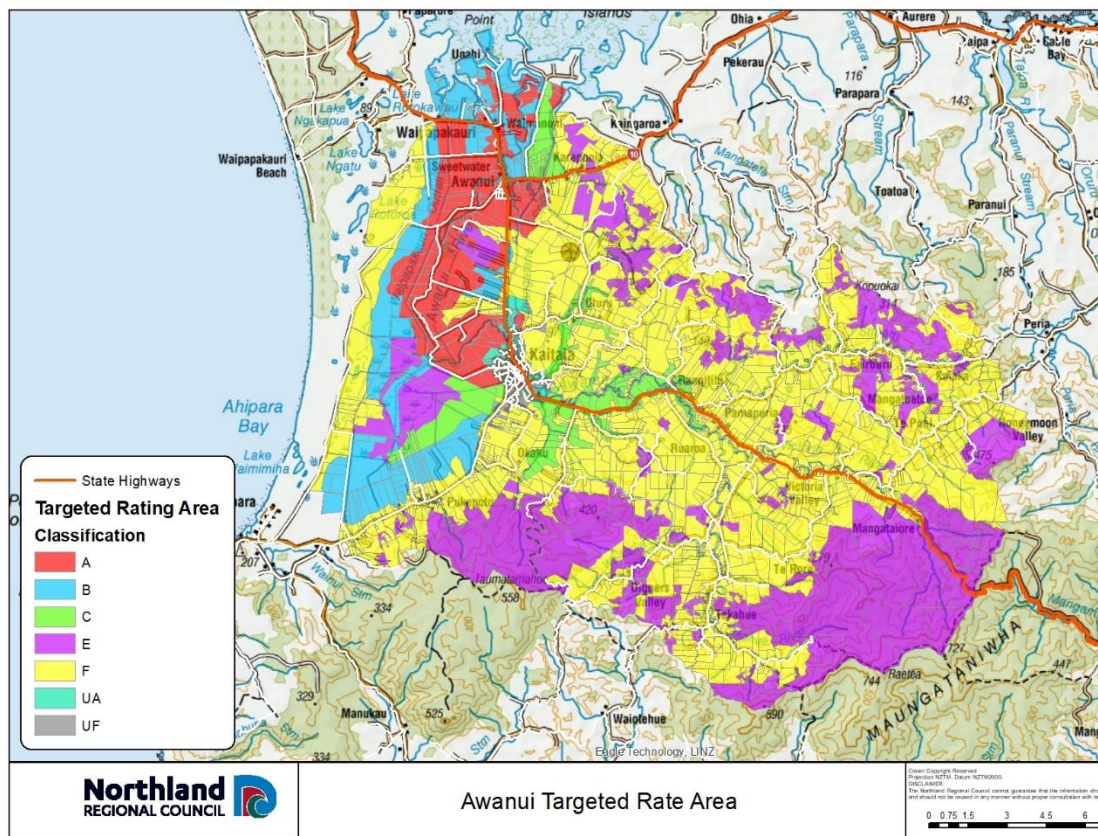
k. Targeted Awanui River management rate

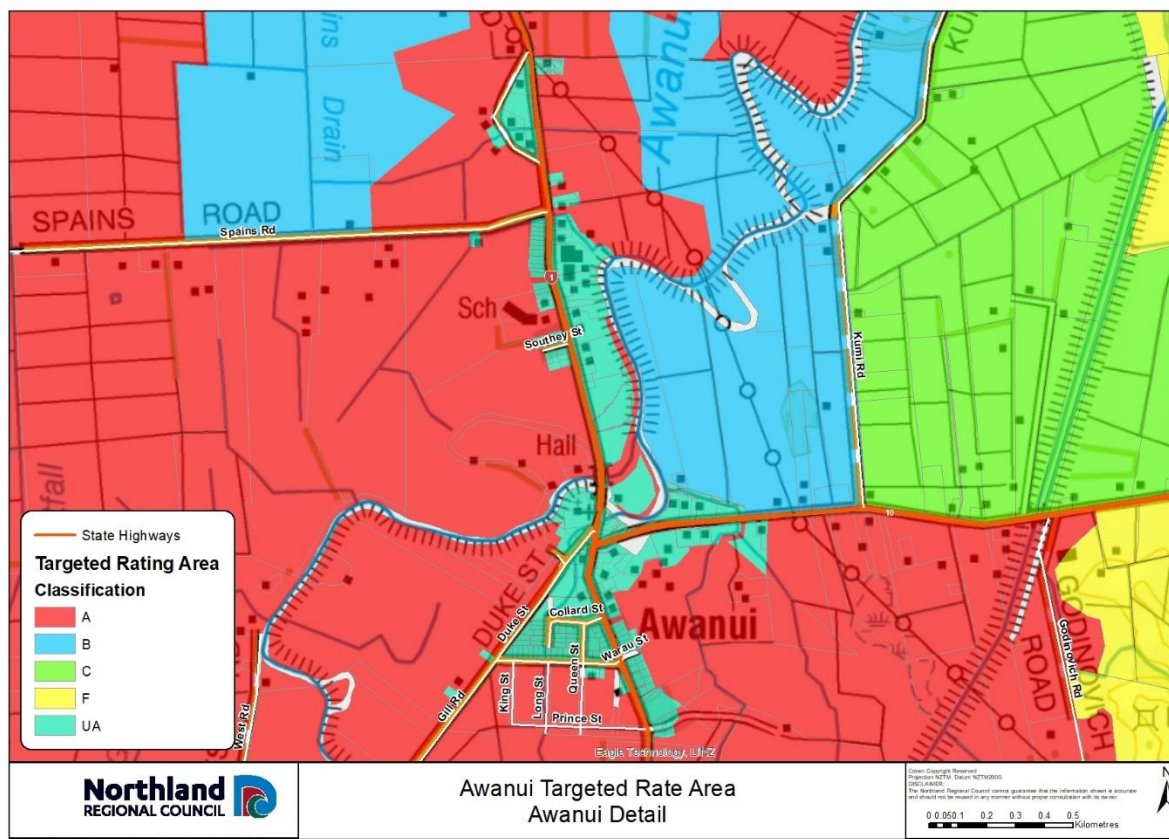
A targeted rate set under the LGRA, set differentially by location and area of benefit as defined in the Awanui River Flood Management Plan, and as defined in the following table:

The rate is set differentially as follows:

Category	Description	Rate <u>including GST</u>
UA	Urban rate class UA (floodplain location) \$285.53 direct benefit plus \$28.19 indirect benefit per separately used or inhabited part of a rating unit (SUIP).	\$313.72 per SUIP
UA	Urban rate class UA – commercial differential.	\$941.16 per SUIP
UF	Urban rate classes UF (higher ground) \$28.19 direct benefit plus \$28.19 indirect benefit per separately used or inhabited part of a rating unit.	\$56.38 per SUIP
UF	Urban rate class UF – commercial differential.	\$169.14 per SUIP
Rural	Rural rate differentiated by class, \$11.75 per separately used or inhabited part of a rating unit (SUIP) of indirect benefit plus a rate per hectare for each of the following classes of land in the defined Kaitāia flood rating district as illustrated in the following maps and table.	\$11.75 per SUIP
Class	Description	Rate <u>including GST</u>
A & B	High benefit: rural land which receives high benefit from the Awanui scheme works due to reduced river flooding risk and/or reduced duration of flooding and/or coastal flooding – all rateable land other than in the commercial differential.	\$23.33 per hectare
A & B commercial differential		\$69.99 per hectare
C	Moderate benefit: land floods less frequently and water clears quickly – all rateable land other than in the commercial differential.	\$10.90 per hectare
C commercial differential		\$32.70 per hectare
F	Contributes runoff waters and increases the need for flood protection - all rateable land other than in the commercial differential.	\$0.77 per hectare
F commercial differential		\$2.31 per hectare

The rating classifications are illustrated in the following maps:





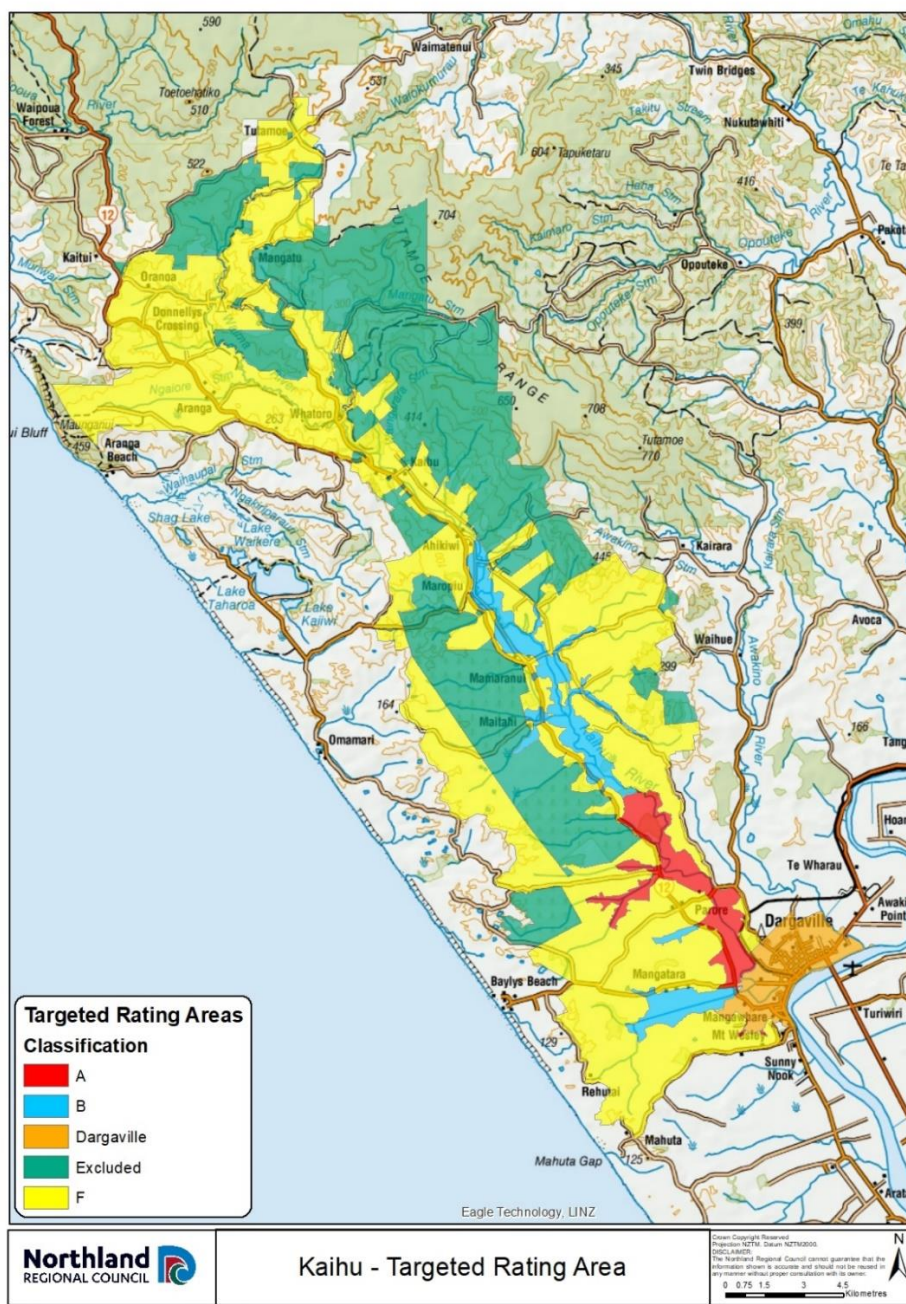
I. Targeted Kaihū River management rate

A targeted rate set under the LGRA, and set differentially by location and area of benefit as defined in the following table:

Class	Description	Rate <u>Including GST</u>
A	Land on the floodplain and side valleys downstream of Rotu Bottleneck.	\$23.13 per hectare
B	Land on the floodplain and tributary side valleys between Ahikiwi and the Rotu Bottleneck and in the Mangatara Drain catchment upstream of SH12.	\$11.39 per hectare
F	Land within the Kaihū River rating area not falling within Class A and Class B.	\$1.60 per hectare

Urban Contribution – A contribution from the Kaipara District Council instead of a separate rate per property: \$5,015 per annum

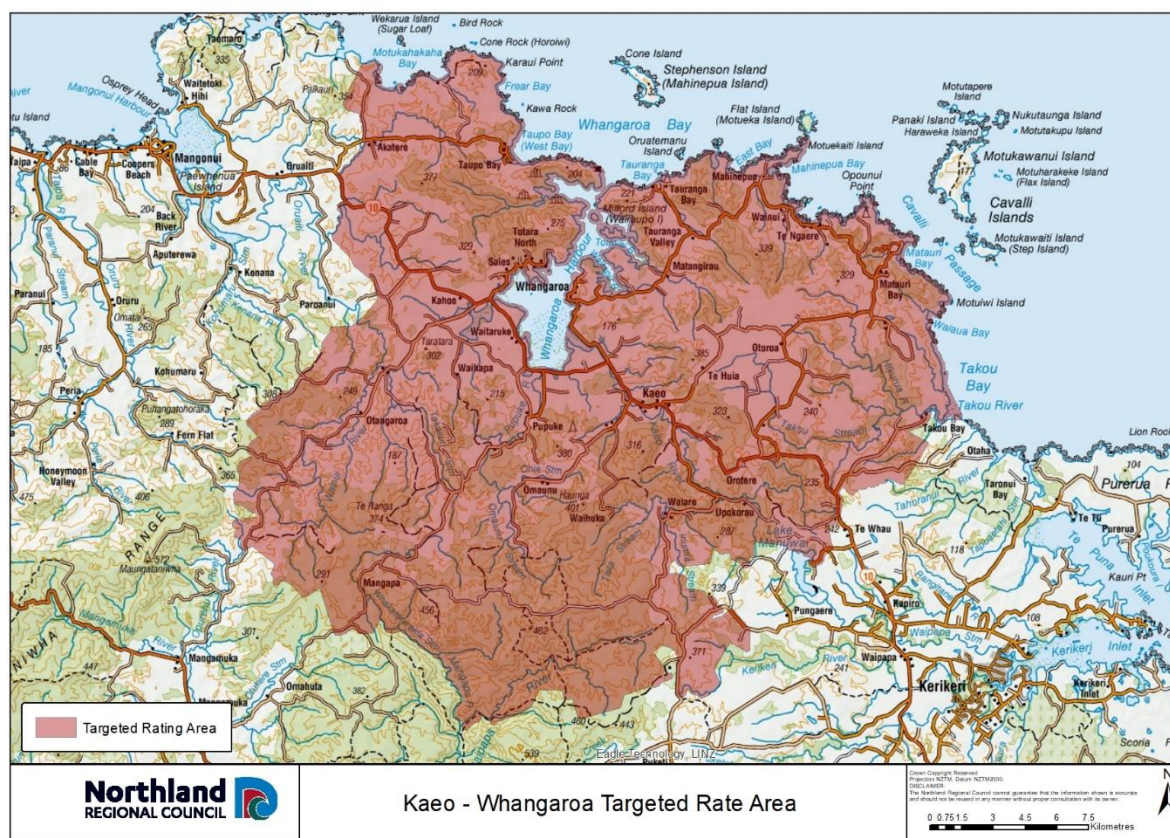
The rating classifications are illustrated in the following map:



I. Targeted Kaeo-Whangaroa rivers management rate

A targeted rate set under the LGRA, set on a uniform basis in respect of each rateable separately used or inhabited part of a rating unit falling within the former Whangaroa Ward rating rolls of 100-199, as illustrated in the map below:

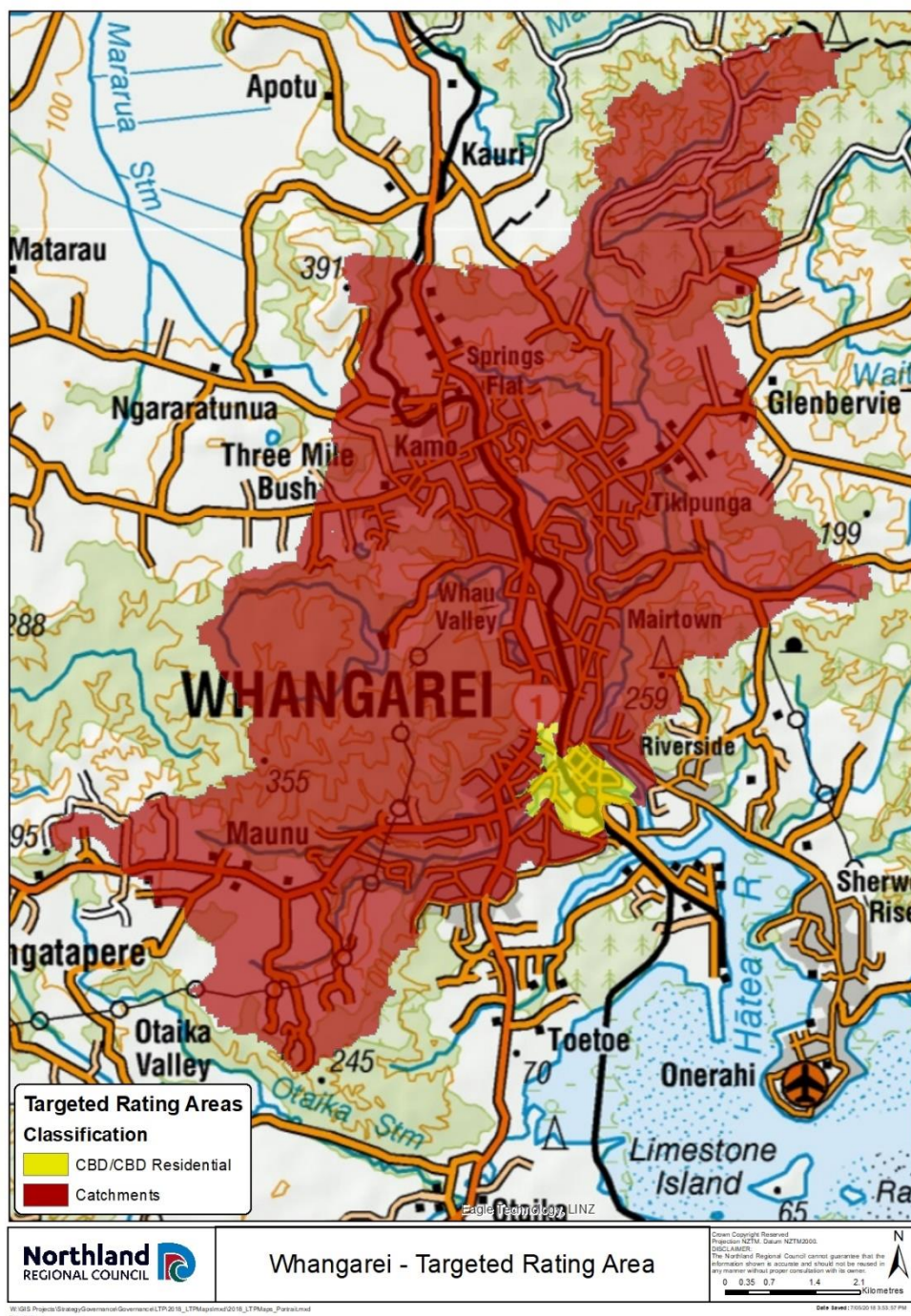
	<u>Including GST</u>
Former Whangaroa Ward	\$54.52 per SUIP



m. Targeted Whangārei urban rivers management rate

A targeted rate set under the LGRA and assessed on all rateable properties defined by reference to the differential categories and differentiated by location (illustrated in the map below) and, for some categories, land use. It is set as a fixed amount per each rateable separately used or inhabited part (SUIP) of a rating unit, as follows:

Category	Including GST
1 Commercial properties located in the Whangārei Central Business District flood area:	\$351.22 per SUIP
2 Residential properties located in the Whangārei Central Business District flood area:	\$172.08 per SUIP
3 Properties located in the contributing water catchment area (including properties falling in the Waiarohia, Raumanga, Kirikiri and Hātea River Catchments):	\$42.13 per SUIP



Differential categories for the Whangārei urban rivers management rate:

<p>Residential properties in the Whangārei central business district</p>	<p>Residential properties in the Whangārei central business district (CBD) flood area are defined as all rating units which are used principally for residential or lifestyle residential purposes, including retirement villages, flats etc.</p> <p>Residential properties also includes multi-unit properties, these being all separate rating units used principally for residential purposes, and on which is situated multi-unit type residential accommodation that is used principally for temporary or permanent residential accommodation and for financial reward, including, but not limited to, hotels, boarding houses, motels, tourist accommodation, residential clubs and hostels but excluding</p>
---	---

	any properties that are licensed under the Sale and Supply of Alcohol Act 2012.
Commercial properties in the Whangārei central business district	Commercial properties in the Whangārei CBD flood area are all separate rating units used principally for commercial, industrial or related purposes or zoned for commercial, industrial or related purposes in accordance with the Whangārei district plan. For the avoidance of doubt, this category includes properties licensed under the Sale and Supply of Alcohol 2012; and private hospitals and private medical centres.

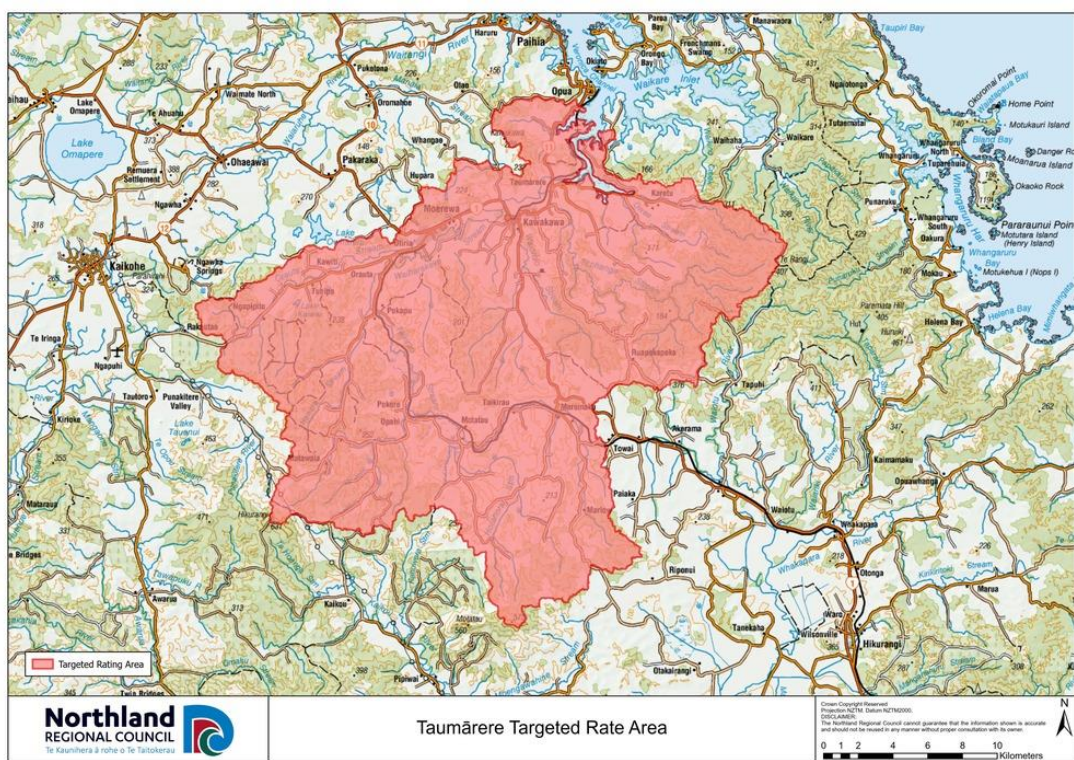
n. Targeted Taumārere rivers management rate

A targeted rate set under the LGRA, set on a uniform basis in respect of each rateable separately used or inhabited part of a rating unit falling within the Tamārere, as illustrated in the map below:

Including GST

Taumārere

\$67.15 per SUIP



4. That the Northland Regional Council resolves the following with respect to payment dates for rates and the penalty regime::

Far North District constituency:

The Northland Regional Council resolves that all rates within the Far North District constituency are payable in four equal instalments, on the following dates:

Instalment	Due date for payment
Instalment 1	20 August 2022
Instalment 2	20 November 2022
Instalment 3	20 February 2023
Instalment 4	20 May 2023

The Northland Regional Council resolves to add the following penalties to unpaid Far North District constituency rates:

- In accordance with section 58(1)(a) of the LGRA, a penalty of ten percent (10%) will be added to any portion of each instalment of Far North District constituency rates assessed in the 2022/23 financial year that is unpaid on or by the respective due date for payment as stated above. These penalties will be added on the following dates:

Instalment	Date penalty will be added
Instalment 1	27 August 2022
Instalment 2	27 November 2022
Instalment 3	27 February 2023
Instalment 4	27 May 2023

Kaipara District constituency:

The Northland Regional Council resolves that all rates within the Kaipara District constituency are payable in four equal instalments, on the following dates:

Instalment	Due date for payment
Instalment 1	20 August 2022
Instalment 2	20 November 2022
Instalment 3	20 February 2023
Instalment 4	20 May 2023

The Northland Regional Council resolves to add the following penalties to unpaid Kaipara District constituency rates:

- In accordance with section 58(1) (a) of the LGRA, a penalty of ten percent (10%) of so much of each instalment of the Kaipara District constituency rates assessed in the 2022/23 financial year that are unpaid after the relevant due date for each instalment will be added on the relevant penalty date for each instalment stated below, except where a ratepayer has entered into an arrangement by way of direct debit authority, and honours that arrangement. These penalties will be added on the following dates:

Instalment	Date penalty will be added
Instalment 1	21 August 2022
Instalment 2	21 November 2022
Instalment 3	21 February 2023

Instalment 4	21 May 2023
--------------	-------------

- In accordance with section 58(1)(b) of the LGRA, a penalty of ten per cent (10%) of the amount of all Kaipara District constituency rates (including any penalties) from any previous financial years that are unpaid on 5 July 2022 will be added on 7 July 2022.
- In accordance with section 58(1)(c) of the LGRA, a penalty of ten per cent (10%) of the amount of all Kaipara District constituency rates to which a penalty has been added under the point immediately above and which remain unpaid on 10 January 2023 will be added on 11 January 2023.

Whangārei District constituency:

The Northland Regional Council resolves that all rates within the Whangārei District constituency are payable in four equal instalments, on the following dates:

Instalment	Due date for payment
Instalment 1	20 August 2022
Instalment 2	20 November 2022
Instalment 3	20 February 2023
Instalment 4	20 May 2023

The Northland Regional Council resolves to add the following penalties to unpaid Whangārei District constituency rates:

- In accordance with section 58(1)(a) of the LGA, a penalty of ten percent (10%) will be added to any portion of each instalment of Whangārei District constituency rates assessed in the 2022/23 financial year that is unpaid on or by the respective due date for payment as stated above. These penalties will be added on the following dates:

Instalment	Date penalty will be added
Instalment 1	24 August 2022
Instalment 2	23 November 2022
Instalment 3	23 February 2023
Instalment 4	24 May 2023

- In accordance with section 58(1)(b) of the LGRA, a penalty of ten per cent (10%) will be added to any Whangārei District constituency rates (including any penalties) from any financial year prior to 1 July 2022 that still remain unpaid as at 5 July 2022. This penalty will be added on 7 September 2022.

The district councils have advised that their rates adoption dates are as follows:

- Far North District Council – 30 June 2022
- Kaipara District Council – 28 June 2022
- Whangārei District Council – 30 June 2022.

Should their collection and/or penalty dates change through the rate setting process we will need to amend our resolution accordingly.

Carried

Secretarial Note:

- Confirmation was provided that the rating detail contained in Item 7.1 'Rates for the year 1 July 2022 to 30 June 2023' had undergone a specific legal review.
- Items 7.2 'Adoption of Annual Plan 2022/23' and 'Adoption of User Fees and Charges 2022/23' were addressed prior to Item 7.1 'Rates for the year 1 July 2022 to 30 June 2023' in accordance with legal advice.

Adoption of Annual Plan 2022/23 (Item 7.2)

Report from Nicola Hartwell, Corporate Planner

Moved (Stolwerk/Blaikie)

1. That the report 'Adoption of Annual Plan 2022/23' by Nicola Hartwell, Corporate Planner dated 26 May 2022, be received.
2. That council sets and adopts the Annual Plan 2022/23 *(included as Attachment 1 pertaining to Item 7.2 of the 28 June 2022 council agenda)*.
3. That council authorises Bruce Howse, Group Manager – Corporate Services to make any necessary minor drafting, typographical, rounding, or presentation corrections to the Annual Plan 2022/23 prior to final publication of the document.

Carried

Adoption of User Fees and Charges 2022/23 | Kaupapa Here a Utu (Item 7.3)

Report from Robyn Broadhurst, Policy Specialist

Moved (Stolwerk/Macdonald)

1. That the report 'Adoption of User Fees and Charges 2022/23 | Kaupapa Here a Utu' by Policy Specialist and dated 11 May 2022, be received.
2. That council sets and adopts the User Fees and Charges 2022/23 *(included as Attachment 1 pertaining to Item 7.3 of the 28 June 2022 council agenda)*.
3. That council authorises Group Manager – Corporate Excellence to make any necessary minor drafting, typographical, rounding, or presentation corrections to the User Fees and Charges 2022/23 prior to final publication of the document.

Carried

Biosecurity Operational Plan 2022-2023 (Item 7.4)

Report from Don McKenzie, Pou Tiaki Pūtaiao - GM Biosecurity

Moved (Craw/Macdonald)

1. That the report 'Biosecurity Operational Plan 2022-2023' by Don McKenzie, Pou Tiaki Pūtaiao - GM Biosecurity and dated 14 June 2022, be received.
2. That council approve the Biosecurity Operational Plan 2022-2023 *(included as Attachment 1 pertaining to Item 7.4 of the 28 June 2022 council agenda)* in accordance with the Biosecurity Act section 100b.
3. That council authorises the GM Biosecurity to make any necessary minor drafting, typographical, rounding, or presentation corrections to the Biosecurity Operational Plan 2022-2023.

Carried

Secretarial Note: Appreciation was extended to all staff who were involved in the development of the Biosecurity Operational Plan which was completed on time and described as 'ambitious' yet achievable.

Submissions on freshwater and indigenous biodiversity national instruments (Item 7.5)

Report from Ben Lee, Planning and Policy Manager

Moved (Robinson/Macdonald)

1. That the report '' by Ben Lee, Planning and Policy Manager and dated **Error! No document variable supplied.**, be received.
2. That council make a submission on the exposure draft of proposed changes to the National Policy Statement for Freshwater Management (2020) and the National Environmental Standards for Freshwater (2020).
3. That councillors Blaikie, Craw, Macdonald and Smart be delegated authority to approve the content of a submission on behalf of council on the exposure draft of proposed changes to the National Policy Statement for Freshwater Management (2020) and the National Environmental Standards for Freshwater (2020), and the submission to be signed by the Chair.
4. That councillors Blaikie, Craw, Macdonald and Smart be delegated authority to:
 - a. decide on behalf of council whether to make a submission on the Draft National Policy Statement for Indigenous Biodiversity – Exposure draft, and
 - b. approve the content of a submission on behalf of council(if a submission is to be made) , and the submission to be signed by the Chair.
5. That a draft of any submission made under resolution 3. or 4. will be circulated to non-elected members of the Te Taitokerau Māori and Council Working Party for comment prior to being lodged.

Carried

Te Mana o Te Wai Funding (Item 7.6)

Report from Ben Lee, Planning and Policy Manager

Moved (Robinson/Craw)

1. That the report 'Te Mana o Te Wai Funding' by Ben Lee, Planning and Policy Manager and dated 24 May 2022, be received.
2. That the allocation of the \$250,000 Te Mana o Te Wai funding for 2023/2024, 2023/2024 and 2024/2025 is based on the following priorities:
 - a. 1st priority: Supporting tangata whenua participation in the freshwater planning process.
 - b. 2nd priority: Developing a mātauranga Māori freshwater framework.
 - c. 3rd priority:
 - i. Implementing the mātauranga Māori freshwater framework, and
 - ii. Investigating the use of mechanisms available under the Resource Management Act 1991 to involve tangata whenua in freshwater

management (such as using transfer of functions and joint management agreements)

3. That the allocation of the \$250,000 Te Mana o Te Wai funding for 2022/2023 is as follows:

Activity	22/23
A) Supporting tangata whenua in the freshwater planning process	\$150k
B) Developing a Freshwater Mātauranga Māori framework	\$100K
C) Implementing the Mātauranga Māori freshwater framework	\$0
D) Investigating the use of mechanisms available under the Resource Management Act 1991 to involve tangata whenua in freshwater management (such as using transfer of functions and joint management agreements)	\$0

4. That Te Taitokerau Māori and Council Working Party advice is sought early 2023 on the allocation of the 2023/2024 Te Mana o Te Wai funding.
5. That Te Taitokerau Māori and Council Working Party advice is sought on a scope of work for developing a mātauranga Māori freshwater framework.
6. That council will approve a scope of work for developing a mātauranga Māori freshwater framework upon receiving advice from Te Taitokerau Māori and Council Working Party.

Carried

Tangata Whenua Environmental Monitoring Fund - draft allocation policy (Item 7.7)

Report from Justin Murfitt, Strategic Policy Specialist

Moved (Robinson/Kitchen)

1. That the report 'Tangata Whenua Environmental Monitoring Fund - draft allocation policy' by Justin Murfitt, Strategic Policy Specialist and dated 7 June 2022, be received.
2. That council adopt the Tāngata Whenua Environmental Monitoring Fund draft allocation policy (*included as Attachment 1 pertaining to Item 7.7 of the 28 June 2022 council agenda*).

Carried

Formal endorsement of submission made into the National Adaptation Plan by the Joint Climate Change Adaptation Committee (Item 7.8)

Report from Tom FitzGerald, Climate Change Manager

Moved (Macdonald/Craw)

1. That the report 'Formal endorsement of submission made into the National Adaptation Plan by the Joint Climate Change Adaptation Committee' by Climate Change Manager and dated 10 June 2022, be received.
2. That the final Submission (*included as Attachment 1 pertaining to Item 7.8 of the 28 June 2022 council agenda*) be formally received and retrospectively approved.

Carried

Secretarial Note: Appreciation was extended to all involved in finalising the submission on the National Adaptation Plan.

Chair's Report to Council (Item 8.1)

Report from Penny Smart, Chair

Moved (Smart/Stolwerk)

That the report 'Chair's Report to Council' by Penny Smart, Chair and dated 14 June 2022, be received.

Carried

Chief Executive's Report to Council (Item 8.2)

Report from Malcolm Nicolson, Tumuaki - Chief Executive Officer

Moved (Stolwerk/Macdonald)

That the report 'Chief Executive's Report to Council' by Malcolm Nicolson, Tumuaki - Chief Executive Officer and dated 30 May 2022, be received.

Carried

Secretarial Note:

- *The Marketing and Engagement Manager was acknowledged as the co-winner of the Taituarā Local Government Emerging Leader of the Year award.*
- *Appreciation was extended to Civil Defence Emergency Management staff for their work progressing the National Partnership Charter which was a 'shared vision with central government'.*
- *It was advised that Northland Civil Defence had formally written to the Minister highlighting that the reinstatement of the RNZ Kaitiāia mast was critical to ensure over 200 households could receive emergency updates.*
- *Concern was raised regarding the number of fatalities on Northland roads and the strain it put on emergency services.*

Receipt of Committee Minutes (Item 9.1)

Report from Chris Taylor, Governance Specialist

Moved (Macdonald/Stolwerk)

That the unconfirmed minutes of the:

- Te Oneroa-A-Tōhē Board Minutes - 22 April 2022
- Joint Climate Change Adaption Committee 30 May 2022
- Regional Transport Committee 7 June 2022
- Kaipara Moana Remediation Joint Committee 13 June 2022
- Civil Defence Emergency Management Group 14 June 2022

be received.

Carried

Secretarial Note: Representatives from each of the committees provided a verbal update on priorities and key workstreams.

Working Party Updates and Chairpersons' Briefings (Item 9.2)

Report from Sally Bowron, Strategy, Governance and Engagement Team Admin/PA

Moved (Craw/Macdonald)

That the report 'Working Party Updates and Chairpersons' Briefings' be received.

Carried

Secretarial Note: The Chair of each working party provided a verbal update on areas of focus and key work programmes.

Kaupapa ā Roto/Business with Public Excluded (Item 10.0)

Moved (Macdonald/Stolwerk)

1. That the public be excluded from the proceedings of this meeting to consider confidential matters.
2. That the general subject of the matters to be considered whilst the public is excluded, the reasons for passing this resolution in relation to this matter, and the specific grounds under the Local Government Official Information and Meetings Act 1987 for the passing of this resolution, are as follows:

Item No.	Item Issue	Reasons/Grounds
10.1	Confirmation of confidential minutes - council meeting 24 May 2022	The public conduct of the proceedings would be likely to result in disclosure of information, as stated in the open section of the meeting.
10.2	Human Resources Report - May 2022	The public conduct of the proceedings would be likely to result in disclosure of information, the withholding of which is necessary to protect the privacy of natural persons, including that of deceased natural persons s7(2)(a).

10.3	Regional Projects Reserve: Investment proposal for Kaipara Water Scheme	The public conduct of the proceedings would be likely to result in disclosure of information, the withholding of which is necessary to enable council to carry out, without prejudice or disadvantage, commercial activities s7(2)(h) and the withholding of which is necessary to enable council to carry on, without prejudice or disadvantage, negotiations (including commercial and industrial negotiations) s7(2)(i).
10.4	Purchase of Whangārei CBD Properties	The public conduct of the proceedings would be likely to result in disclosure of information, the withholding of which is necessary to enable council to carry out, without prejudice or disadvantage, commercial activities s7(2)(h) and the withholding of which is necessary to enable council to carry on, without prejudice or disadvantage, negotiations (including commercial and industrial negotiations) s7(2)(i).

3. That the Independent Financial Advisor be permitted to stay during business with the public excluded.

Carried

Secretarial Note: The meeting adjourned at 12.13pm and reconvened at 12.17pm to address business with the public excluded.

Whakamutunga (Conclusion)

The meeting concluded at 1.33pm.