

Agenda

Rārangi Take

Kaipara Moana Remediation Joint Committee
Monday 6 May 2024 at 11.30am



kmr.org.nz



Kaipara Moana Remediation Joint Committee Agenda

Rā Date:	Monday 6 May 2024
Wā Time:	11.30am
Tauwāhi Location:	Kaiwaka Sports Association, 2 Gibbons Road, Kaiwaka, 0573
Ngā Mana whakahaere Members	Tame Te Rangi (Chair), Te Rūnanga o Ngāti Whātua Amy Macdonald (Deputy Chair), Northland Regional Council Cherie Povey, Ngā Maunga Whakahii o Kaipara Georgina Curtis-Connolly, Te Uri o Hau Greg Sayers, Auckland Council Jack Crow, Northland Regional Council Jane Sherard, Ngā Maunga Whakahii o Kaipara John Blackwell, Northland Regional Council Kerrin Leoni, Auckland Council Michelle Carmichael, Auckland Council Taiāwhio Wati, Te Uri o Hau Virginia Warriner, Te Rūnanga o Ngāti Whātua

The Quorum for the Joint Committee is:

- a) 7 members of the 12 Committee members, and;*
- b) At least 1 member each from Auckland Council and Northland Regional Council, and;*
- c) At least 2 members from Kaipara Uri (unspecified from which entities).*

Recommendations contained in the agenda are NOT decisions of the meeting. Please refer to minutes for resolutions.

For any queries regarding this meeting, please contact Kaipara Moana Remediation via the website <https://kmr.org.nz/contact/>

1.0	KARAKIA WHAKATAU	Page
1.0	NGĀ WHAKAPAHĀ APOLOGIES	
2.0	NGĀ WHAKAPUAKANGA DECLARATIONS OF INTEREST	
3.0	NGĀ RĪMITI ITEMS	
4.1	Kaipara Moana Remediation Briefing Presentation	4

TITLE: **Kaipara Moana Remediation Briefing Presentation**

From: Sophie Bone, PA to Pou Tātaki and Governance Support

Te Kaupapa | Purpose


To present the items of the Joint Committee Presentation to the Kaipara Moana Remediation Joint Committee.

Rīmiti | Items

1. Digital Tools Update

Presented by Stephanie Versteeg (Amo-Rautaki Pākihi) – Kaipara Moana Remediation.

Pirihongi | Attachments

Attachment 1: Digital Tools Presentation and Introduction to Field Trip [↓](#) 



Mātai Onekura

Sediment Reduction Planning tool

Steph Versteeg, Duncan Kervell

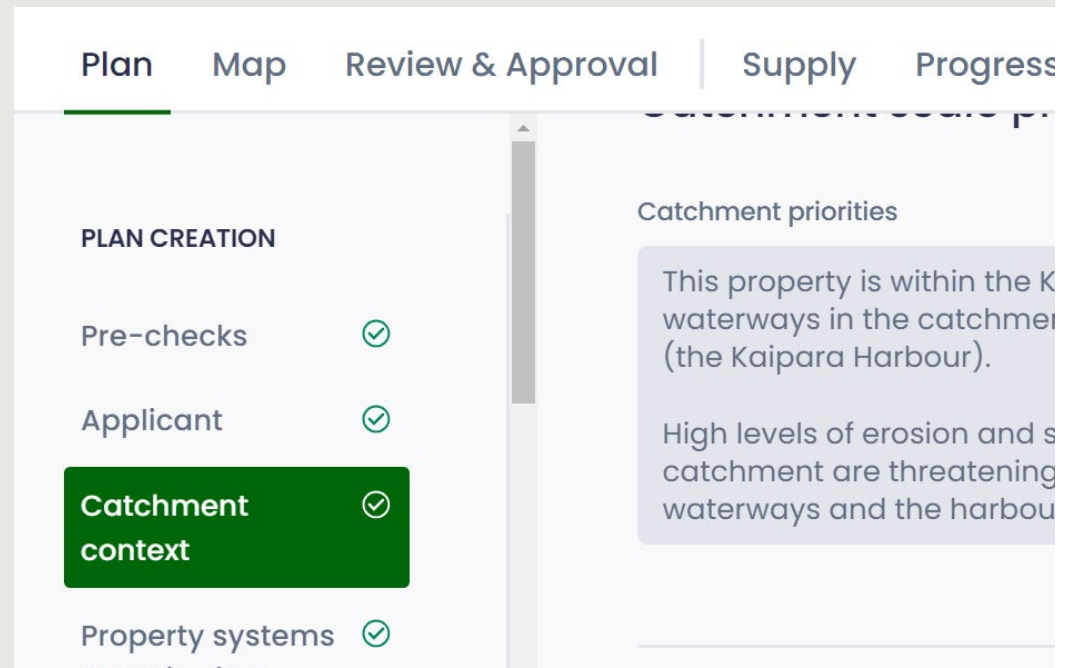
6 May 2024



Mātai Onekura – overview

Enables KMR and Field Advisors to effectively and efficiently support 100s of landowners and projects across the catchment

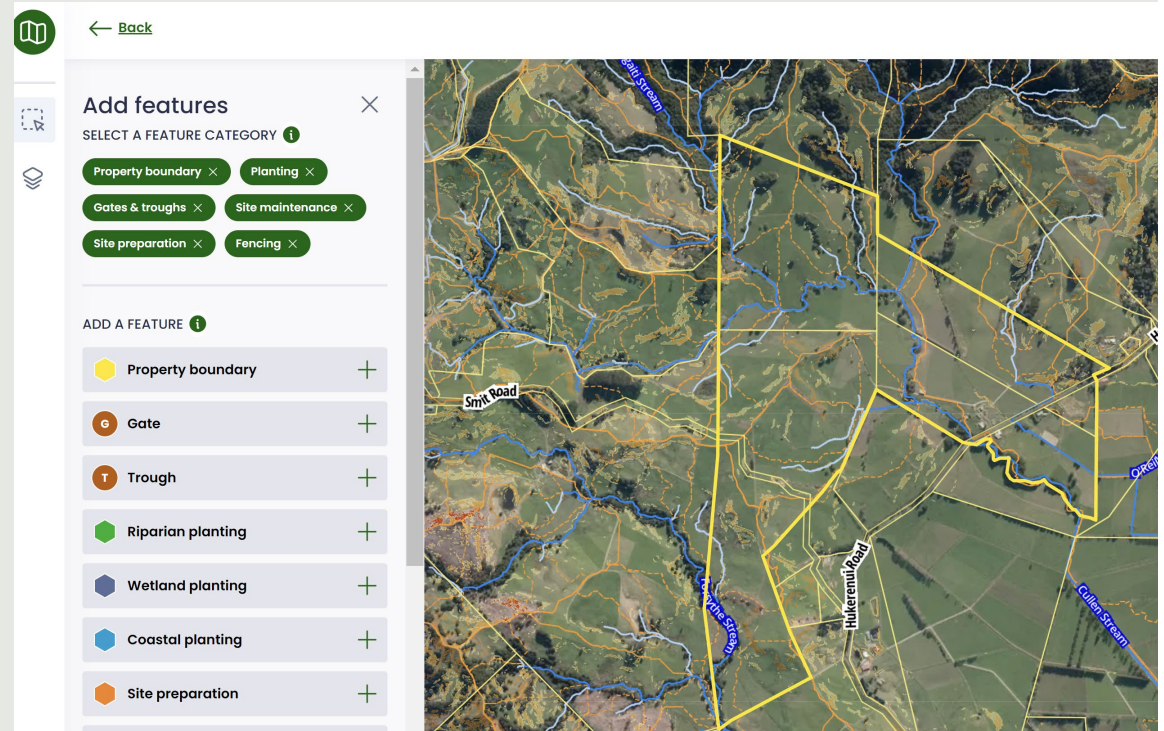
- Operational since May 2023, with minor ongoing improvements
- An up-to-date ‘single source of truth’ on KMR projects
- Provides confidence to MOU partners
- Flexibility to evolve as needed



Comprehensive programme management

Digital register of landowner commitments & actions

- Relationship and project management
- Digital layers to support risk assessment
- Spatial capture, costing and funding of property-scale actions
- Enables access to funding
- Monitoring, validation and reporting



Accurate, verifiable and spatial records of remediation projects

Benefits for internal and external users, programme partners, and landowners and groups

- Responsive engagement with landowners to deliver on-the-ground remediation
- Timely and accurate **reporting and insights**
- Data inputs into **modelling of impact** (via Tātaki Wai)
- Used by some landowners to secure 'green loans'
- Could help leverage other third-party investments (e.g. (from carbon or biodiversity markets))

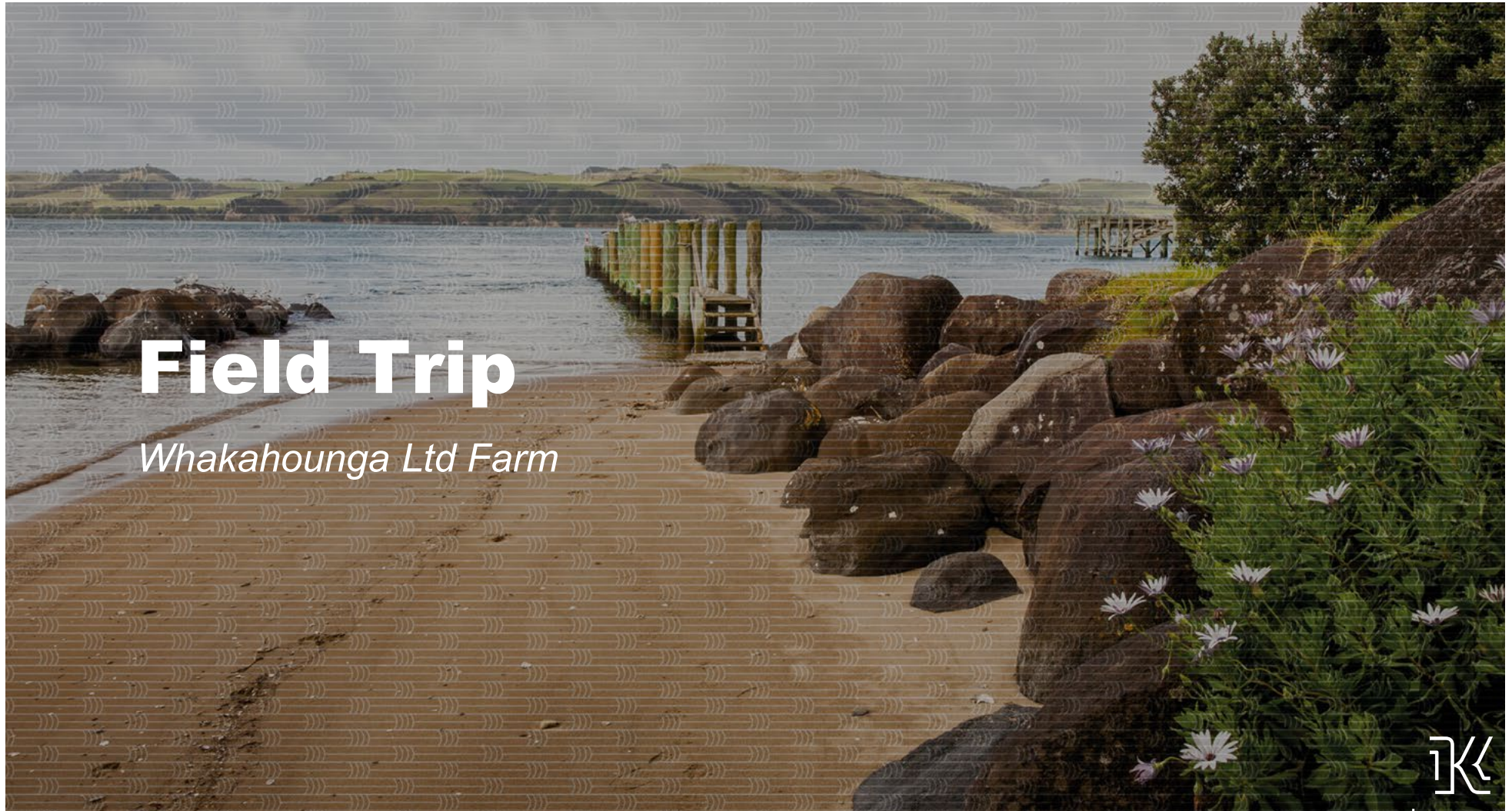


Future directions?

Mātai Onekura can potentially continue to evolve to add value to KMR, programme partners, landowners & groups. Examples shown below are illustrations only – they depend on future policy settings and KMR governance decisions

- **Freshwater Farm Plans?** Mātai Onekura is well placed to support landowners and groups to implement actions in their FFPs.
- **Landowners and groups** could upload their own information (e.g. photos, monitoring data) to help KMR partners and funders ‘see and sum’ project benefits and investment outcomes.
- **Kōrero Tuku Iho** could upload – with suitable protections – information about sites of significance
- Further work could be done to better support landowner / group access to **market-based incentives** for restoration e.g. climate, biodiversity (c.f. KMR’s earlier impact investment project).

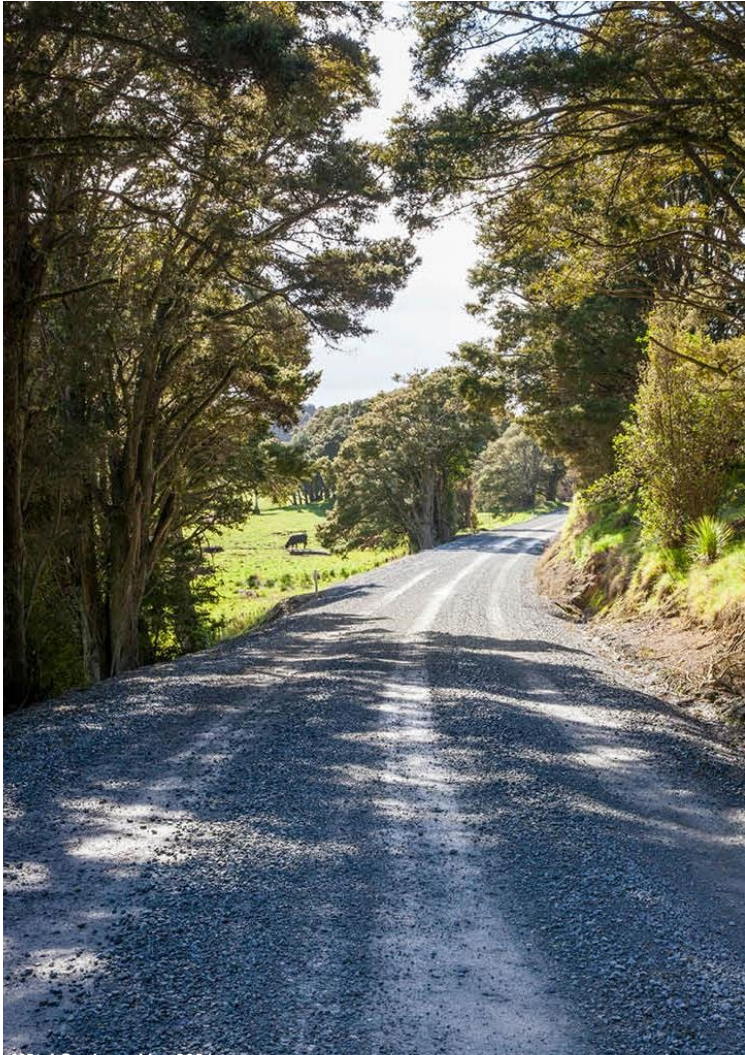




Field Trip

Whakahounga Ltd Farm





Mātai Onekura: A use case

Landowner Sarah Welch

Managed by Jackie Nairn

This property has established 12.5 ha of planting
by working with KMR (over 2 years)

- 9.09 ha of planting is proposed for winter 2024 in 3 sites
- Fencing is in place, and the land is under light grazing
- Previous weed control was achieved via 1 blanket kill and some smaller areas of spot control
- Helicopter spraying is cost effective and efficient against weed burden (kikuyu, lotus major, pampus, buttercup).



← Back

View actions

PROJECT

Project 1 × Project 2 ×

ACTION TYPE

Property boundary × Planting ×
Gates & troughs × Site maintenance ×
Site preparation × Fencing ×

COMPLETION STATUS

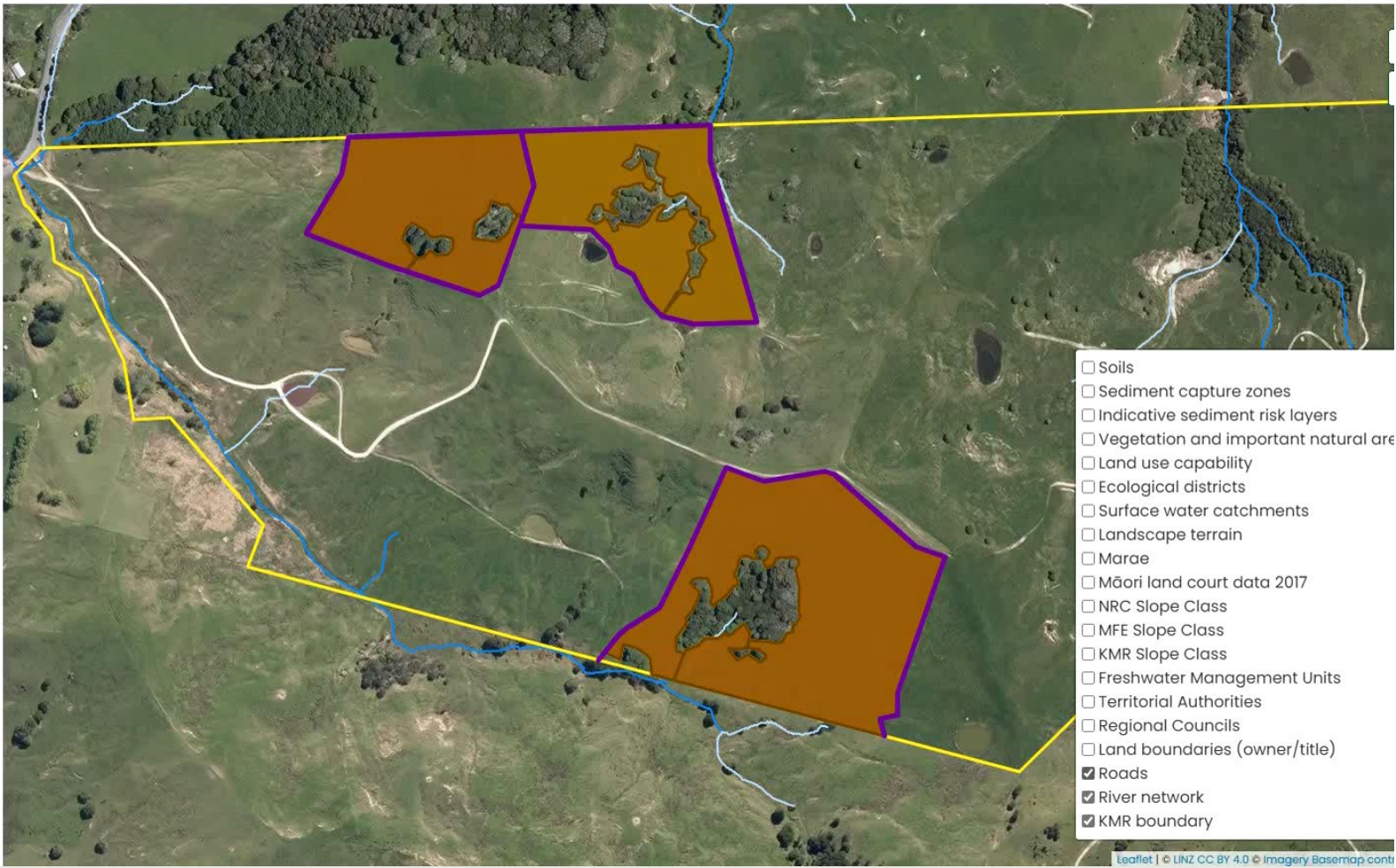
Completed × Not assessed ×

Select all

PROJECT 1

PROJECT 2

- Hill country - native planting - Area 1 Planting 2024 +
- Hill country - native planting - Area 2 2024 planting +
- Hill country - native planting - Area 3 2024 planting +
- Maintenance spot spray - Area 1 Planting 2024 +
- Maintenance spot spray - Area 2 2024 planting +
- Maintenance spot spray - Area 3 2024 planting +
- Preparation blanket spray - Area 1 Planting 2024 +



- Soils
- Sediment capture zones
- Indicative sediment risk layers
- Vegetation and important natural area
- Land use capability
- Ecological districts
- Surface water catchments
- Landscape terrain
- Marae
- Māori land court data 2017
- NRC Slope Class
- MFE Slope Class
- KMR Slope Class
- Freshwater Management Units
- Territorial Authorities
- Regional Councils
- Land boundaries (owner/title)
- Roads
- River network
- KMR boundary

Leaflet | © LINZ CC BY 4.0 © Imagery Basemap cont

MO data is combined with oblique photography to assess erosion risk & scope/approve projects



Oblique photography of proposed planting area (part of the datasets reviewers & assessors use to make decisions on projects)



Oblique photography of Area 1, demonstrating areas of slips and scars from previous erosion



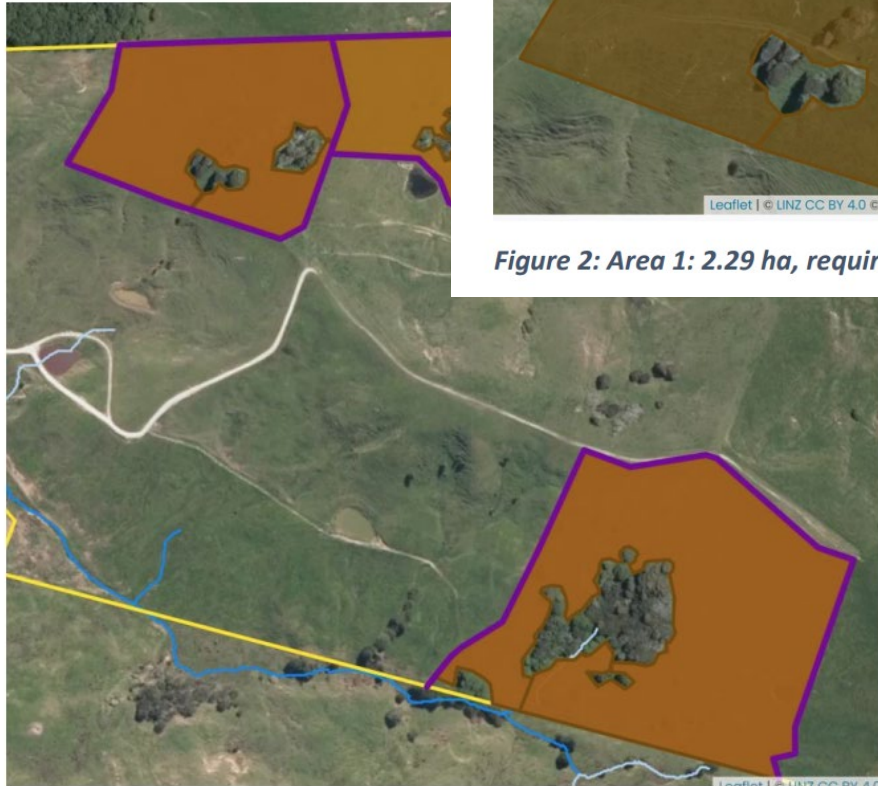


Figure 2: Area 1: 2.29 ha, requiring 5722 plants.

**MO ‘autosums’
project areas &
plant numbers
to enable
accurate
pricing, KPI
reporting etc**



← Back
Form mode

View actions

PROJECT

Project 1 × Project 2 ×

ACTION TYPE

Property boundary × Planting ×

Gates & troughs × Site maintenance ×

Site preparation × Fencing ×

COMPLETION STATUS

Completed × Not assessed ×

Select all

PROJECT 1

PROJECT 2

- Hill country - native planting - Area 1 Planting 2024 ×
- Hill country - native planting - Area 2 2024 planting +
- Hill country - native planting - Area 3 2024 planting +
- Maintenance spot spray - Area 1 Planting 2024 +
- Maintenance spot spray - Area 2 2024 planting +
- Maintenance spot spray - Area 3 2024 planting +
- Preparation blanket spray - Area 1 Planting 2024 +

Hill country - native planting - 2.29ha (5722 plants)

Project *
Project 2

Location Name *
Area 1 Planting 2024

Anticipated start *
Jun 2023

Planting difficulty *
Moderate

Justification *
Area of Hill Planting, with small remnant of degraded totara and Taraire coupe needing underplanting.

Work intended to be completed by *
Contractor

Average price per plant (\$) *
1.70

Average price per plant varies by project size. Map the polygon, add any planting zone percentages, then press save to see plant numbers:
< 10,000 = \$2.10/plant (default),
10,000 - 25,000 = \$1.90/plant,
> 25,000 = \$1.70/plant.

Pātai?

Questions?





Copyright © Kaipara Moana Remediation 2023. All rights reserved.