

Northland Regional Council Minutes

Meeting held in the Dargaville Museum,
32 Mt Wesley Coast Road, Dargaville
on Tuesday 25 June 2024, commencing at 10.15am

Tuhinga/Present:

Chairperson, Geoff Crawford

Councillors:

John Blackwell

Joe Carr

Jack Craw

Peter-Lucas Jones (*Via audio-visual link*)

Amy Macdonald (*Via audio-visual link from 10.34 – 11.12am and from 11.20am*)

Marty Robinson

Rick Stolwerk (*Via audio-visual link*)

I Tae Mai/In Attendance:

Full Meeting

Independent Tangata Whenua Advisor (*Via audio-visual link*)

Deputy Chief Executive Officer

Pou Whakaritenga - GM Regulatory Services

Group Manager - Community Resilience

Pou Tiaki Taiao - GM Environmental Services

Pou Tiaki Pūtaiao - GM Biosecurity

Corporate Strategy Manager

Financial Planning Manager

Manager Māori Relationships

Māori Engagement and Governance Support Administration

Governance Specialist

Part Meeting

Finance Manager (*Via audio-visual link*)

Financial Accountant (*Via audio-visual link*)

Biosecurity Manager – Marine

Economist

Corporate Planning Specialist (*Via audio-visual link*)

Economic Policy Advisor

Māori Cultural Advisor

Secretarial Note: The Chair declared the meeting open at 10.17am and proceedings commenced with a karaka by the Māori Cultural Advisor.

Ngā whakapāha/Apologies (Item 1.0)

Moved (Robinson/Blackwell)

That the apologies from Councillor Shortland, the Independent Risk Advisor and Independent Tangata Whenua Advisor (*Dee-Ann Wolferstan*) for non-attendance and from Councillor Macdonald for delayed arrival be received.

Carried

Secretarial Note: The apology from the Chief Executive Officer was also acknowledged with the Deputy Chief Executive Officer in attendance to fulfil this role.

Nga whakapuakanga/Declarations of Conflicts of Interest (Item 2.0)

It was advised that councillors should make declarations item-by-item as the meeting progressed.

Confirmation of Minutes - 21, 22 and 28 May 2024 (Item 5.1)

Report from Meloney Tupou, Māori Governance and Engagement Support Admin

Moved (Craw/Robinson)

That the minutes of the Long Term Plan Deliberations held on 21 and 22 May 2024 and the minutes of the council meeting held on 28 May 2024, be confirmed as a true and correct record and that these be duly authenticated with the Chair's electronic signature.

Carried

Receipt of Action Sheet (Item 5.2)

Report from Chris Taylor, Governance Specialist

Moved (Carr/Blackwell)

That the action sheet be received.

Carried

Financial Report to May 2024 (Item 6.1)

Report from Taka Skipwith, Financial Accountant

Moved (Craw/Blackwell)

That the report 'Financial Report to May 2024' by Taka Skipwith, Financial Accountant and dated 12 June 2024, be received.

Carried

Secretarial Note:

- *The results of council's managed funds for the month of May were unavailable at this time.*
- *Councillors to be advised the number of vacant buildings within council's property portfolio.*

Rating considerations under section 100T of the Biosecurity Act 1991 (Item 7.1)

Report from Robyn Broadhurst, Corporate Planning Specialist and Kyla Carlier, Corporate Strategy Manager

Moved (Craw/Robinson)

1. That the report 'Rating considerations under section 100T of the Biosecurity Act 1991' by Robyn Broadhurst, Corporate Planning Specialist and Kyla Carlier, Corporate Strategy Manager and dated 13 May 2024, be received.
2. That council adopts the section 100T analysis for the purpose of setting the Pest Management Rate, as set out in the Funding Impact Statement of the Long Term Plan 2024-2034 and as outlined in this Item 7.1 of the 25 June 2024 council agenda.

Carried

Secretarial Note: Concern was recorded that currently there was no mechanism to charge vessels entering the country to recover the costs of the biosecurity response for marine infestations. This was a challenging space and the Biosecurity and Biodiversity Working Party to take this matter into consideration through the Regional Pest Management Plan.

Adoption of the Long Term Plan 2024-2034, Significance and Engagement Policy, Financial Strategy and Infrastructure Strategy, Revenue and Financing Policy, and Financial Contributions Policy (Item 7.2)

Report from Kyla Carlier, Corporate Strategy Manager and Robyn Broadhurst, Corporate Planning Specialist

Moved (Stolwerk/Jones)

1. That the report 'Adoption of the Long Term Plan 2024-2034, Significance and Engagement Policy, Financial Strategy and Infrastructure Strategy, Revenue and Financing Policy, and Financial Contributions Policy' by Kyla Carlier, Corporate Strategy Manager and Robyn Broadhurst, Corporate Planning Specialist and dated 3 June 2024, be received.
2. That having undertaken consultation in accordance with sections 82 and 82A, by way of the Special Consultative Procedure (Section 83) in accordance with section 87, and pursuant to section 76AA of the Local Government Act 2002, the council adopt the Significance and Engagement Policy as included in the final draft Long Term Plan 2024-2034 (attached under separate cover).
3. That having undertaken consultation in accordance with sections 82 and 82A, and pursuant to sections 102, 103 and 106 of the Local Government Act 2002, the council adopt the Revenue and Financing Policy as included in the final draft Long Term Plan 2024-2034 (attached under separate cover).
4. That in accordance with the requirements of sections 101A and 101B of the Local Government Act 2002, the council adopts the Financial Strategy and Infrastructure Strategy as included in the final draft Long Term Plan 2024-2034 (attached under separate cover).
5. That having undertaken consultation in accordance with the Special Consultative Procedure (Section 83), and pursuant to section 93 of the Local Government Act 2002, the council adopts as its Long Term Plan 2024-2034, the final draft Long Term Plan 2024-2034 (attached under separate cover).

6. That having undertaken consultation in accordance with sections 82 and 82A, and pursuant to sections 102, 103 and 106 of the Local Government Act 2002, the council adopt the Financial Contributions Policy as included in the Long Term Plan 2024-2034 (attached under separate cover).
7. That council delegate to the Group Manager – Corporate Services the authority to approve any minor accuracy, grammatical, typographical or formatting amendments to the Long Term Plan 2024-2034 prior to it being published.

Carried

Secretarial Note: Appreciation was extended to all staff involved in the preparation of the Long Term Plan which set the foundation for council moving forward.

Adoption of User Fees and Charges Policy 2024/25 (Item 7.3)

Report from Kyla Carlier, Corporate Strategy Manager

Moved (Stolwerk/Robinson)

1. That the report 'Adoption of User Fees and Charges Policy 2024/25' by Kyla Carlier, Corporate Strategy Manager and dated 30 May 2024, be received.
2. That council sets and adopts the User Fees and Charges 2024/25 (included as Attachment 1 pertaining to Item 7.3 of the 25 June 2024 council agenda).
3. That council authorises Group Manager – Corporate Services to make any necessary minor drafting, typographical, rounding, or presentation corrections to the User Fees and Charges 2024/25 prior to final publication of the document.

Carried

Secretarial Note: It was advised that there was an administrative error in section 1.2.2 'Council owned property hireage fees'. The listed "Mangapai – Standby" to be deleted and the "Mangawhai – Work Boat" to be included. The corrected text as follows:

Floating plant ¹⁰

"Waikare II" - Work Boat	1250.00
"Waikare II" - Standby	500.00
"Karetu" - BOI Patrol Boat	350.00
"Mangapai" - Work Boat	181.00
"Mangawhai" - Work Boat	181.00
"Ruawai" - Whangārei Work Boat	350.00
Labour (minimum of two crew members)	Actual cost

Adoption of rating policies pertaining to the Far North, Kaipara, and Whangārei districts, including policies on remission and postponement of rates on Māori freehold land (Item 7.4)

Report from Kyla Carlier, Corporate Strategy Manager; Casey Mitchell, Financial Planning Manager and Kim Harvey, Financial Planning Accountant

Moved (Craw/Robinson)

1. That the report 'Adoption of rating policies pertaining to the Far North, Kaipara, and Whangārei districts, including policies on remission and postponement of rates on Māori freehold land' by Kyla Carlier, Corporate Strategy Manager; Casey Mitchell, Financial Planning Manager and Kim Harvey, Financial Planning Accountant and dated 13 May 2024, be received.
2. That having undertaken consultation in accordance with sections 82 and 83, and pursuant to sections 102, 108-110 of the Local Government Act 2002, and sections 55 of the Local Government (Rating) Act 2002, and having considered Schedule 11 of the Local Government Act 2002, the council adopt the rating policies for the Far North district, Kaipara district, and Whangārei district, (including the Policy on the Remission and Postponement of Rates on Māori Freehold Land), effective from 1 July 2024 (included as Attachment 1 pertaining to Item 7.4 of the 25 June 2024 council agenda).
3. That council authorises the Group Manager – Corporate Services, to make any necessary minor drafting, typographical, or presentation corrections to the rating policies prior to the finalisation of the document.

Carried

Rates for the year 1 July 2024 to 30 June 2025 (Item 7.5)

Report from Kyla Carlier, Corporate Strategy Manager; Casey Mitchell, Financial Planning Manager and Kim Harvey, Financial Planning Accountant

Moved (Stolwerk/Blackwell)

1. That the report 'Rates for the year 1 July 2024 to 30 June 2025' by Kyla Carlier, Corporate Strategy Manager; Casey Mitchell, Financial Planning Manager and Kim Harvey, Financial Planning Accountant and dated 5 June 2024, be received.
2. That the Northland Regional Council resolves to set the following rates under the Local Government (Rating) Act 2002 (LGRA) for the financial year commencing 1 July 2024 and ending 30 June 2025:

a. Targeted council services rate

A targeted rate as authorised by the LGRA. The rate is calculated on the total projected capital value, as determined by the certificate of projected valuation of each constituent district in the Northland region. An additional \$1.73 (including GST) per each rateable separately used or inhabited part (SUIP) of a rating unit is to be assessed across the Whangārei constituency to provide funding for the ongoing maintenance of the Hātea River Channel. The rate is differentiated by location in the Northland region and assessed as a fixed amount per each rateable separately used or inhabited part (SUIP) of a rating unit in the Far North and Whangārei Districts, and on each rateable rating unit (RU) in the Kaipara district. The rate is set as follows:

	<u>Including GST</u>
Far North District	\$199.02 per SUIP
Kaipara District	\$242.60 per RU
Whangarei District	\$209.33 per SUIP
The Whangarei District targeted council services rate amount of \$209.33 (including GST) per SUIP includes funding for the Hātea River Channel amount of \$1.73 (including GST).	

b. Targeted land and freshwater management rate

A targeted rate as authorised by the LGRA. The rate is assessed on the land value of each rateable rating unit in the region. The rate is set per dollar of land value. The rate per dollar of land value is different for each constituent district because the rate is allocated based on projected land value, as provided for in section 131 of the LGRA. The rate is set as follows:

	<u>Including GST</u>
Far North District	\$0.0002765 per dollar of land value
Kaipara District	\$0.0002829 per dollar of land value
Whangarei District	\$0.0002868 per dollar of land value

c. Targeted pest management rate

A targeted rate as authorised by the LGRA. The rate is calculated on the total projected capital value, as determined by the certificate of projected valuation of each constituent district in the Northland region. The rate is a fixed amount, differentiated by location in the Northland region. The rate will be assessed on each rateable separately used or inhabited part (SUIP) of a rating unit in the Far North and Whangarei Districts, and each rateable rating unit (RU) in the Kaipara District. The rate is set as follows:

	<u>Including GST</u>
Far North District	\$96.70 per SUIP
Kaipara District	\$117.87 per RU
Whangarei District	\$100.86 per SUIP

d. Targeted flood infrastructure rate

A targeted rate as authorised by the LGRA. The rate is a fixed amount assessed on each rateable separately used or inhabited part (SUIP) of a rating unit in the Far North and Whangarei Districts, and each rateable rating unit (RU) in the Kaipara District. The rate is set as follows:

	<u>Including GST</u>
Far North District	\$40.67 per SUIP
Kaipara District	\$40.67 per RU
Whangarei District	\$40.67 per SUIP

e. Targeted emergency and hazard management rate

A targeted rate as authorised by the LGRA. The rate is calculated on the total projected capital value, as determined by the certificate of projected valuation of each constituent district in the Northland region. The rate is a fixed amount, differentiated by location in the Northland region. The rate will be assessed on each rateable separately used or inhabited part (SUIP) of a rating unit in the Far North and Whangarei Districts, and each rateable rating unit (RU) in the Kaipara District. The rate is set as follows:

	<u>Including GST</u>
Far North District	\$54.71 per SUIP
Kaipara District	\$66.69 per RU
Whangarei District	\$57.07 per SUIP

f. Targeted regional rescue services rate

A targeted rate as authorised by the LGRA. The rate is a fixed amount assessed on each rateable separately used or inhabited part (SUIP) of a rating unit in the Far North and Whangarei Districts, and each rateable rating unit (RU) in the Kaipara District. The rate is set as follows:

	<u>Including GST</u>
Far North District	\$11.30 per SUIP
Kaipara District	\$11.30 per RU
Whangarei District	\$11.30 per SUIP

g. Targeted regional sporting facilities rate.

A targeted rate as authorised by the LGRA. The rate is a fixed amount assessed on each rateable separately used or inhabited part (SUIP) of a rating unit in the Far North and Whangarei Districts, and each rateable rating unit (RU) in the Kaipara District. The rate is set as follows:

	<u>Including GST</u>
Far North District	\$16.18 per SUIP
Kaipara District	\$16.18 per RU
Whangarei District	\$16.18 per SUIP

h. Targeted regional economic development rate.

A targeted rate as authorised by the LGRA. This rate is assessed on the land value of each rateable rating unit in the region. The rate is set per dollar of land value. The rate per dollar of land value is different for each constituent district because the rate is allocated based on projected land value, as provided for in section 131 of the LGRA. The rate is set as follows:

Including GST

Far North District	\$0.0000238 per dollar of land value
Kaipara District	\$0.0000244 per dollar of land value
Whangarei District	\$0.0000247 per dollar of land value

i. Targeted Whangārei transport rate

A targeted rate as authorised by the LGRA. The rate is a fixed amount assessed on each rateable separately used or inhabited part of a rating unit (SUIP) in the Whangarei District. The rate is set as follows:

	<u>Including GST</u>
Whangarei District	\$51.81 per SUIP

j. Targeted Far North transport rate

A targeted rate as authorised by the LGRA. The rate is a fixed amount assessed on each rateable separately used or inhabited part of a rating unit (SUIP) in the Far North District. The rate is set as follows:

	<u>Including GST</u>
Far North District	\$8.57 per SUIP

k. Targeted Awanui River management rate

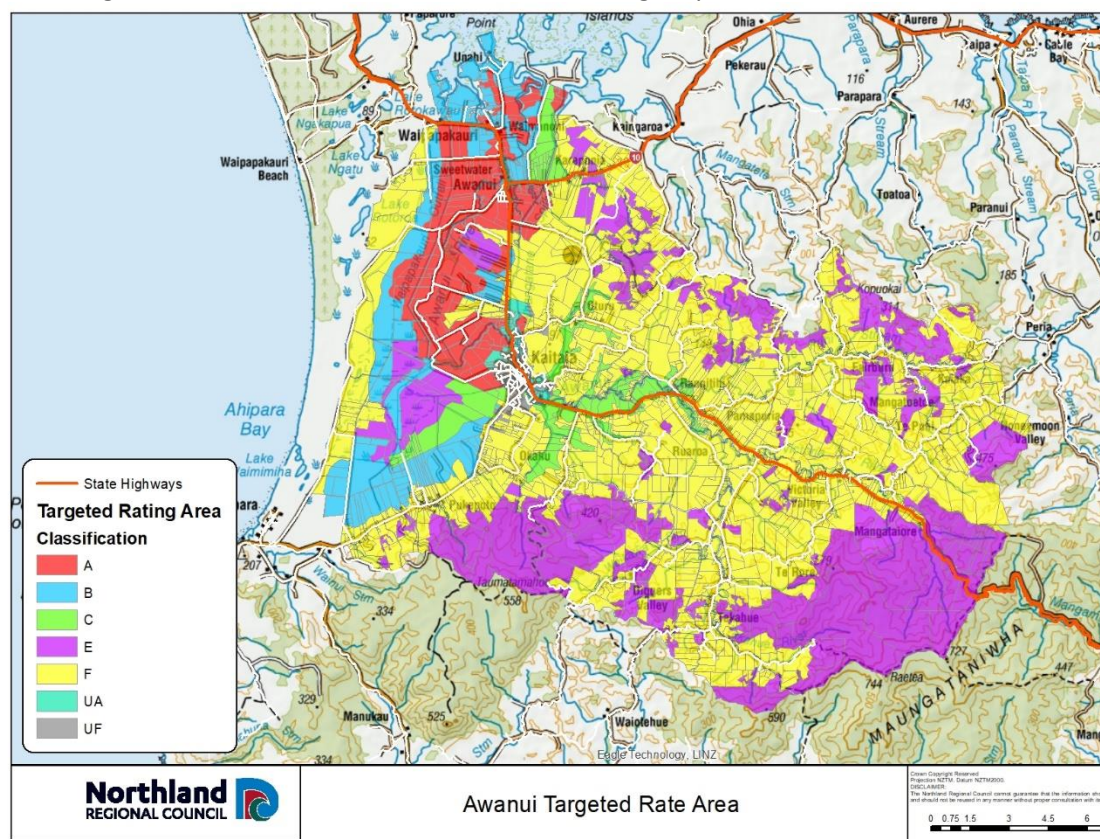
A targeted rate set under the LGRA, set differentially by location and area of benefit as defined in the Awanui River Flood Management Plan, and as defined in the following table:

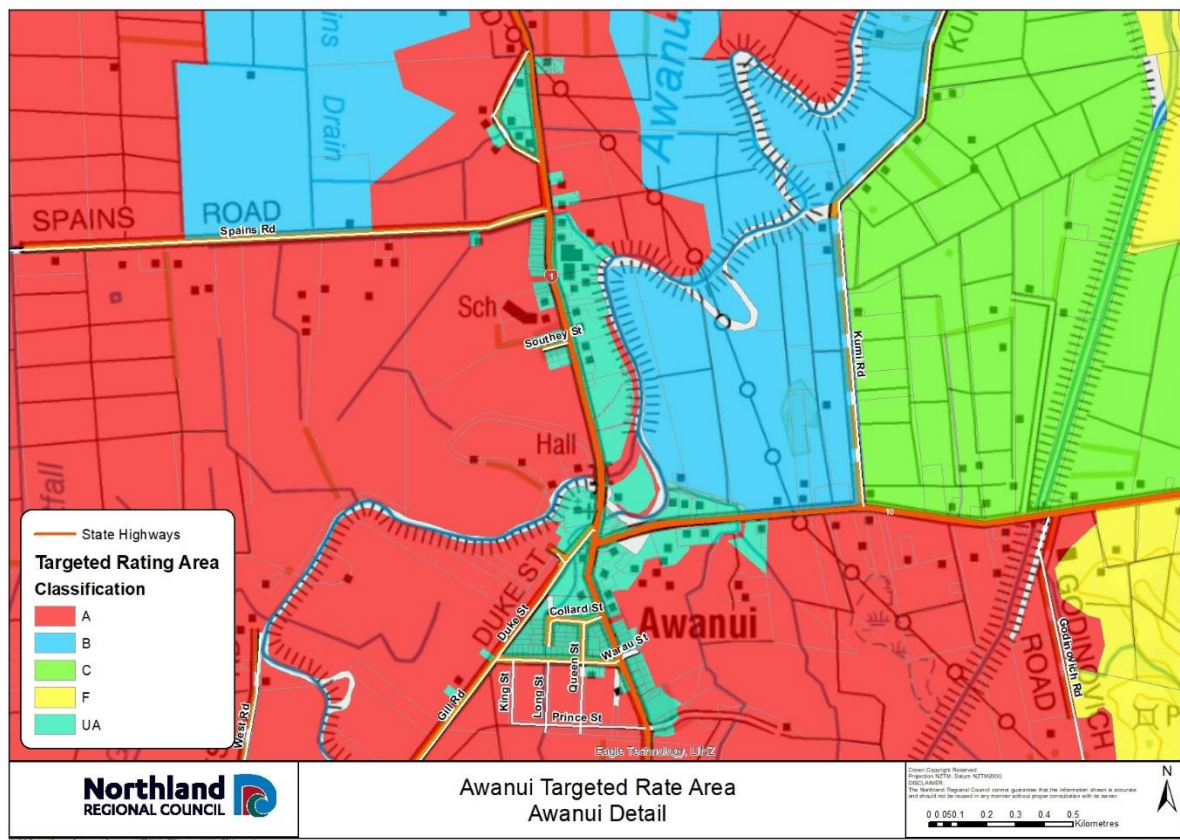
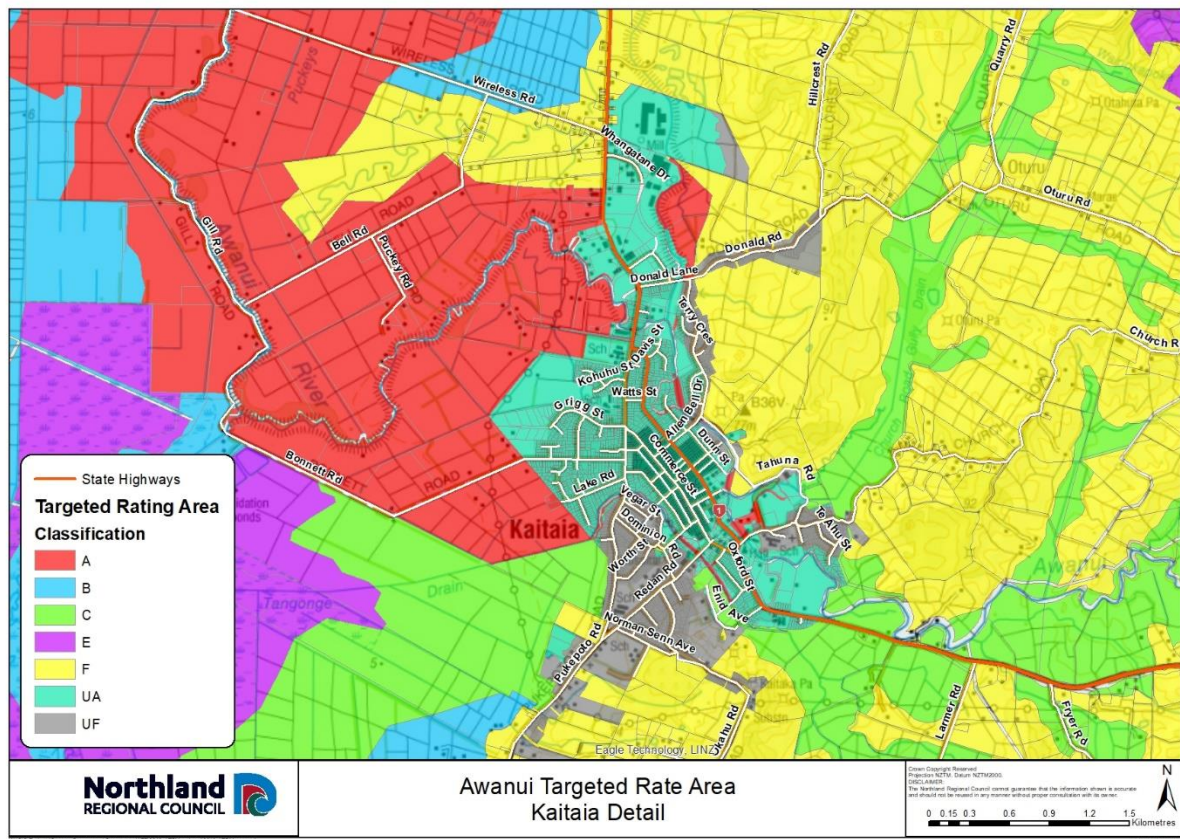
The rate is set differentially as follows:

Category	Description	Rate <u>including GST</u>
UA	Urban rate class UA (floodplain location) \$267.90 direct benefit plus \$26.71 indirect benefit per separately used or inhabited part of a rating unit (SUIP).	\$294.61 per SUIP
UA	Urban rate class UA – commercial differential.	\$883.83 per SUIP
UF	Urban rate classes UF (higher ground) \$26.71 direct benefit plus \$26.71 indirect benefit per separately used or inhabited part of a rating unit.	\$53.41 per SUIP
UF	Urban rate class UF – commercial differential.	\$160.23 per SUIP
Rural	Rural rate differentiated by class, \$10.96 per separately used or inhabited part of a rating unit (SUIP) of indirect benefit plus a rate per hectare for each of the following classes of land in the defined Kaitaia flood rating district as illustrated in the following maps and table.	\$10.96 per SUIP

Class	Description	Rate <u>including GST</u>
A & B	High benefit: rural land which receives high benefit from the Awanui scheme works due to reduced river flooding risk and/or reduced duration of flooding and/or coastal flooding – all rateable land other than in the commercial differential.	\$22.40 per hectare
A & B commercial differential		\$67.20 per hectare
C	Moderate benefit: land floods less frequently and water clears quickly – all rateable land other than in the commercial differential.	\$10.32 per hectare
C commercial differential		\$30.96 per hectare
F	Contributes runoff waters and increases the need for flood protection - all rateable land other than in the commercial differential.	\$0.72 per hectare
F commercial differential		\$2.16 per hectare

The rating classifications are illustrated in the following maps:



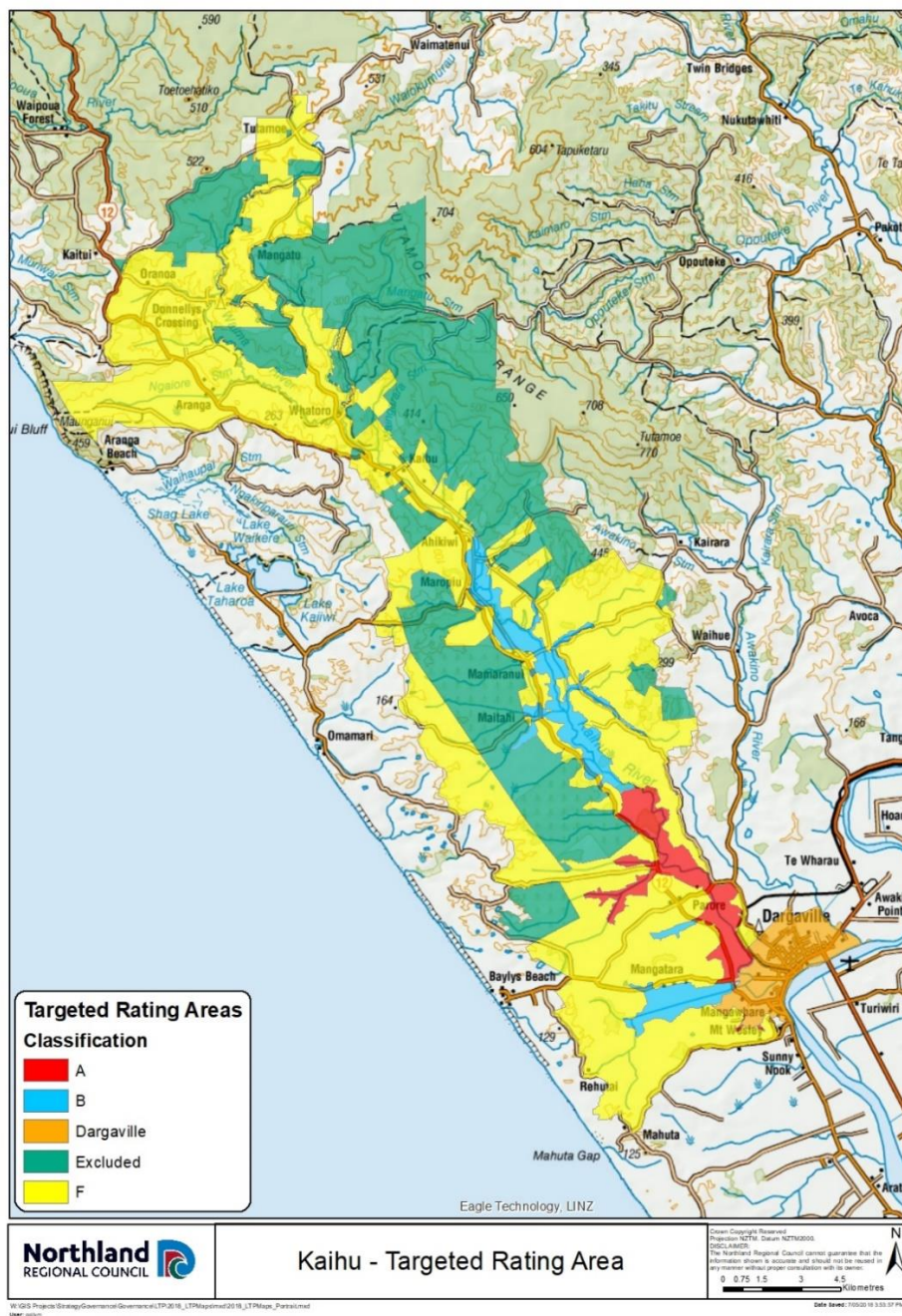


I. Targeted Kaihū River management rate

A targeted rate set under the LGRA, and set differentially by location and area of benefit as defined in the following table:

Class	Description	Rate <u>Including GST</u>
A	Land on the floodplain and side valleys downstream of Rotu Bottleneck.	\$23.13 per hectare
B	Land on the floodplain and tributary side valleys between Ahikiwi and the Rotu Bottleneck and in the Mangatara Drain catchment upstream of SH12.	\$11.39 per hectare
F	Land within the Kaihū River rating area not falling within Class A and Class B, or the excluded area.	\$1.60 per hectare
Urban Contribution – A contribution from the Kaipara District Council instead of a separate rate per property.		\$5,015 per annum

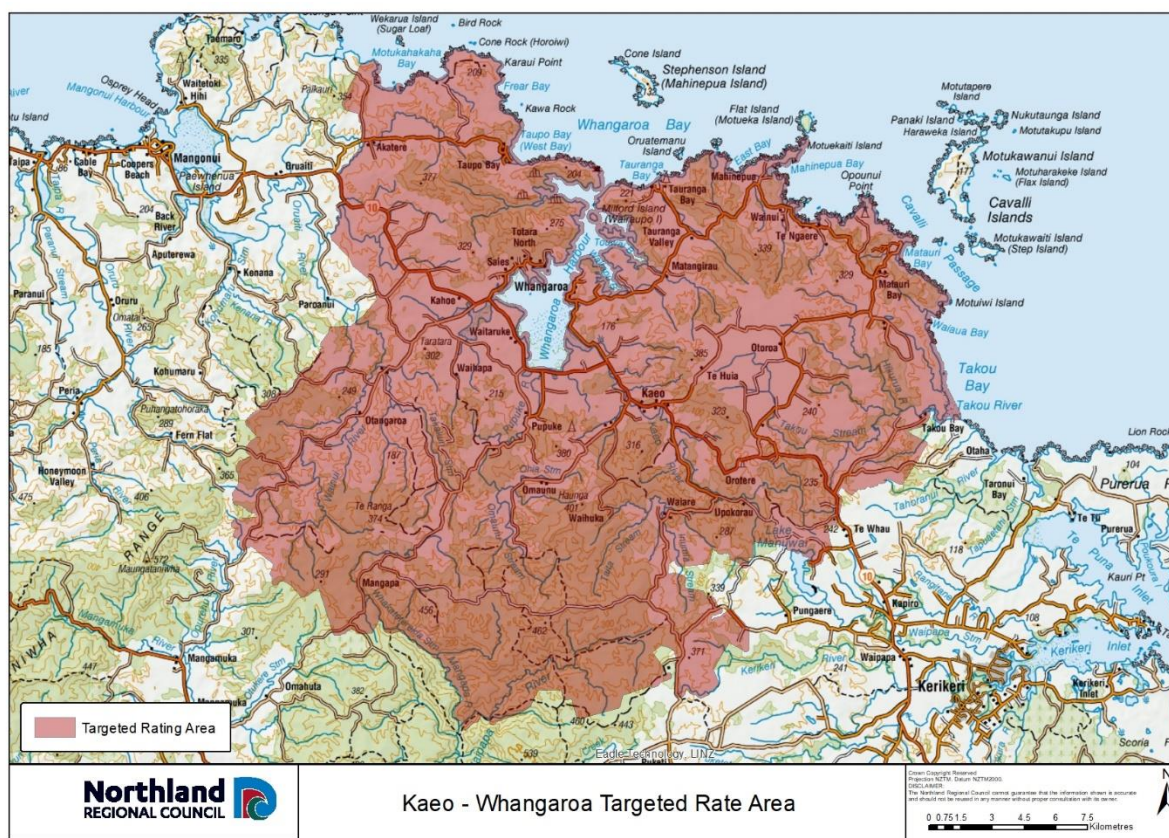
The rating classifications are illustrated in the following map:



m. Targeted Kaeo-Whangaroa rivers management rate

A targeted rate set under the LGRA, set on a uniform basis in respect of each rateable separately used or inhabited part of a rating unit falling within the former Whangaroa Ward rating rolls of 100-199, as illustrated in the map below:

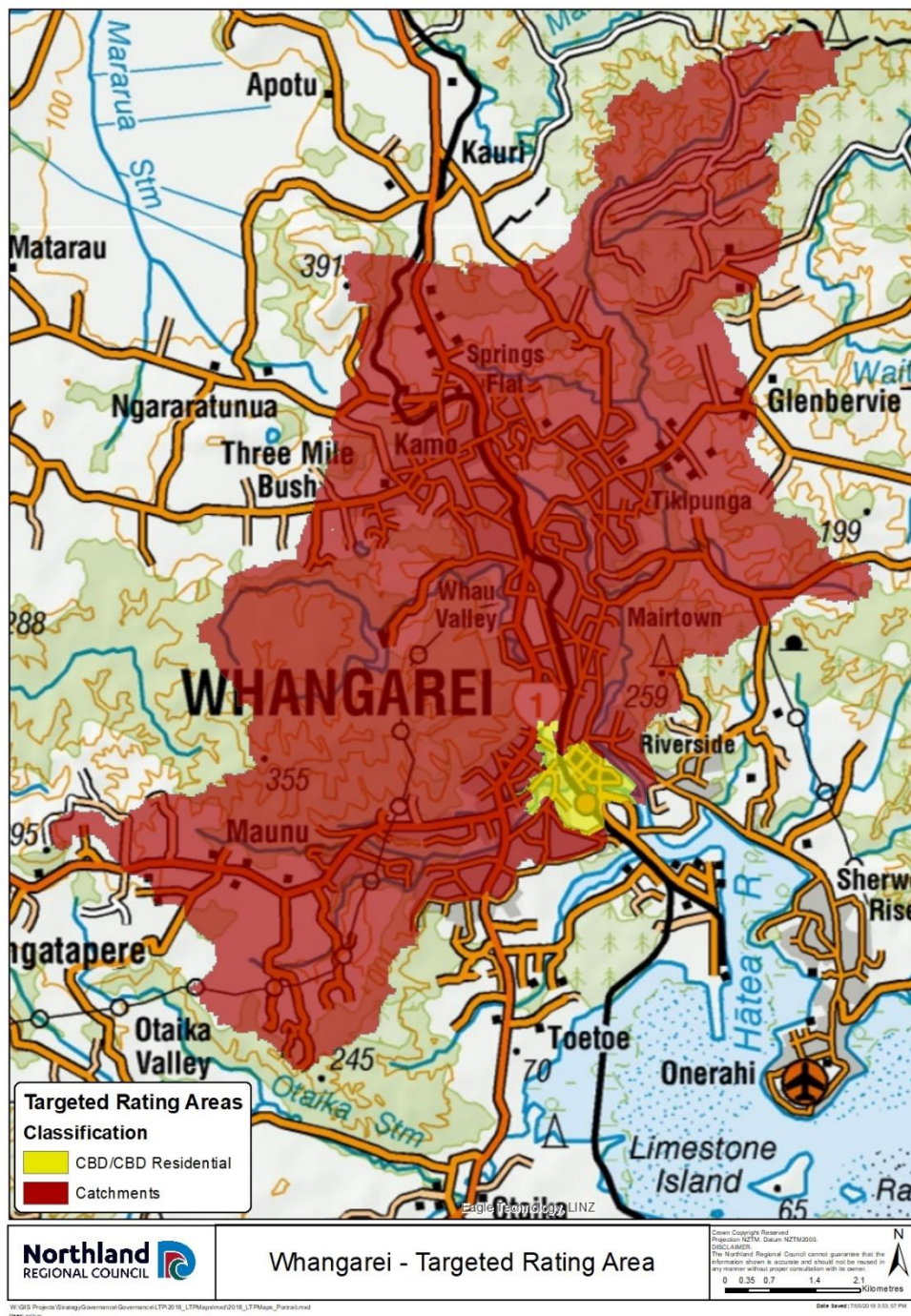
	<u>Including GST</u>
Former Whangaroa Ward	\$47.78 per SUIP



n. Targeted Whangārei urban rivers management rate

A targeted rate set under the LGRA and assessed on all rateable properties defined by reference to the differential categories and differentiated by location (illustrated in the map below) and, for some categories, land use. It is set as a fixed amount per each rateable separately used or inhabited part (SUIP) of a rating unit, as follows:

Category	Including GST
1 Commercial properties located in the Whangārei Central Business District flood area:	\$341.08 per SUIP
2 Residential properties located in the Whangārei Central Business District flood area:	\$169.33 per SUIP
3 Properties located in the contributing water catchment area (including properties falling in the Waiarohia, Raumanga, Kirikiri and Hātea River Catchments):	\$40.78 per SUIP



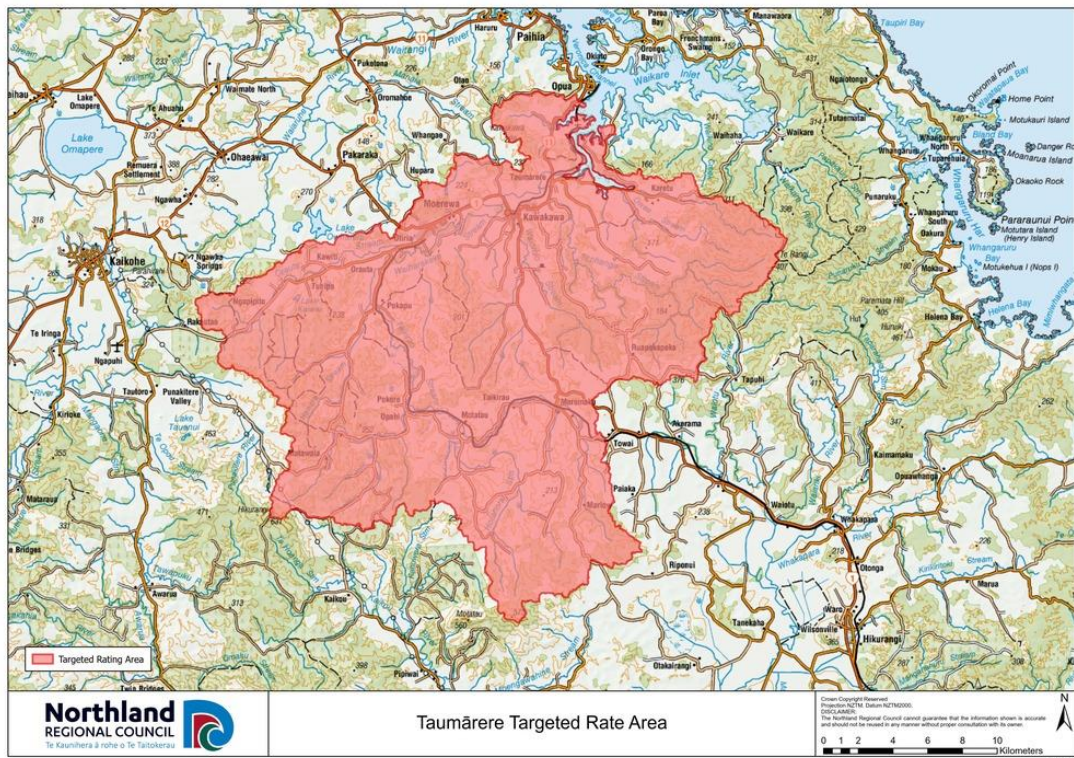
o. Targeted Taumārere rivers management rate

A targeted rate set under the LGRA, set on a uniform basis in respect of each rateable separately used or inhabited part of a rating unit located within and/or intersecting the Taumārere Rivers Management Rate catchment area, as illustrated in the map below:

Including GST

Taumārere

\$68.04 per SUIP



3. That the Northland Regional Council resolves the following with respect to payment dates for rates and the penalty regime:

Far North District constituency:

The Northland Regional Council resolves that all rates within the Far North District constituency are payable in four equal instalments, on the following dates:

Instalment	Due date for payment
Instalment 1	20 August 2024
Instalment 2	20 November 2024
Instalment 3	20 February 2025
Instalment 4	20 May 2025

The Northland Regional Council resolves to add the following penalties to unpaid Far North District constituency rates:

- In accordance with section 58(1)(a) of the LGRA, a penalty of ten percent (10%) will be added to any portion of each instalment of Far North District constituency rates assessed in the 2024/25 financial year that is unpaid on or by the respective due date for payment as stated above. These penalties will be added on the following dates:

Instalment	Date penalty will be added
Instalment 1	27 August 2024
Instalment 2	27 November 2024
Instalment 3	27 February 2025
Instalment 4	27 May 2025

The Northland Regional Council resolves to charge postponement fees in accordance with their rating and postponement policies for the Far North District constituency.

Kaipara District constituency:

The Northland Regional Council resolves that all rates within the Kaipara District constituency are payable in four equal instalments, on the following dates:

Instalment	Due date for payment
Instalment 1	20 September 2024
Instalment 2	20 November 2024
Instalment 3	20 February 2025
Instalment 4	20 May 2025

The Northland Regional Council resolves to add the following penalties to unpaid Kaipara District constituency rates:

- In accordance with section 58(1) (a) of the LGRA, a penalty of ten percent (10%) of so much of each instalment of the Kaipara District constituency rates assessed in the 2024/25 financial year that are unpaid after the relevant due date for each instalment will be added on the relevant penalty date for each instalment stated below, except where a ratepayer has entered into an arrangement by way of direct debit authority, and honours that arrangement. These penalties will be added on the following dates:

Instalment	Date penalty will be added
Instalment 1	21 September 2024
Instalment 2	21 November 2024
Instalment 3	21 February 2025
Instalment 4	21 May 2025

- In accordance with section 58(1)(b) of the LGRA, a penalty of ten per cent (10%) of the amount of all Kaipara District constituency rates (including any penalties) from any previous financial years that are unpaid on 3 July 2024 will be added on 7 August 2024.

- In accordance with section 58(1)(c) of the LGRA, a penalty of ten per cent (10%) of the amount of all Kaipara District constituency rates to which a penalty has been added under the point immediately above and which remain unpaid on 07 February 2025 will be added on 07 February 2025.

Whangarei District constituency:

The Northland Regional Council resolves that all rates within the Whangarei District constituency are payable in four equal instalments, on the following dates:

Instalment	Due date for payment
Instalment 1	20 August 2024
Instalment 2	20 November 2024
Instalment 3	20 February 2025
Instalment 4	20 May 2025

The Northland Regional Council resolves to add the following penalties to unpaid Whangarei District constituency rates:

- In accordance with section 58(1)(a) of the LGA, a penalty of ten percent (10%) will be added to any portion of each instalment of Whangarei District constituency rates assessed in the 2024/25 financial year that is unpaid on or by the respective due date for payment as stated above. These penalties will be added on the following dates:

Instalment	Date penalty will be added
Instalment 1	22 August 2024
Instalment 2	23 November 2024
Instalment 3	24 February 2025
Instalment 4	22 May 2025

- In accordance with section 58(1)(b) of the LGRA, a penalty of ten per cent (10%) will be added to any Whangarei District constituency rates (including any penalties) from any financial year prior to 1 July 2024 that still remain unpaid as at 3 July 2024. This penalty will be added on 16 September 2024.

The Northland Regional Council resolves to charge postponement fees in accordance with their rating and postponement policies for the Whangarei District constituency.

No discount will be given for early payment of rates.

The district councils have advised that their rates adoption dates are as follows:

- Far North District Council – 26 June 2024
- Kaipara District Council – 31 July 2024
- Whangarei District Council – 16 July 2024.

Should their collection and/or penalty dates change through the rate setting process we will need to amend our resolution accordingly.

Carried

Refinement to the Governance Structure (Item 7.6)

Report from Chris Taylor, Governance Specialist

Moved (Carr/Blackwell)

1. That the report 'Refinement to the Governance Structure' by Chris Taylor, Governance Specialist and dated 7 June 2024, be received.
2.
 - a) That Councillor John Blackwell be replaced by Councillor Amy Macdonald as the NRC member on the Joint Climate Change Adaptation Committee.¹
 - b) That Councillor Geoff Crawford be replaced by Councillor John Blackwell as the NRC alternate member on the Climate Change Adaptation Committee.
3. That Councillor Geoff Crawford be replaced by Councillor Rick Stolwerk as the NRC member on the Northland Civil Defence and Emergency Management Group.¹
4.
 - a) That Councillor Peter-Lucas Jones be replaced by Councillor Marty Robinson as an NRC member on Te Oneroa a Tōhē Board.²
 - b) That Councillor Peter-Lucas Jones be appointed the NRC alternate member on Te Oneroa a Tōhē Board (in the event one of the NRC members appointed to the Board is unable to attend).³
5. That Councillor Rick Stolwerk be appointed as a member of the Audit Risk and Finance Committee⁴.
6.
 - a) That Councillor Joe Carr be replaced by Councillor Blackwell as the Chair of the Infrastructure Committee.
 - b) That Councillor Joe Carr remains a member of the Infrastructure Committee.⁵

¹ This recommendation is revoking the council decision of 28 November 2023.

As per Standing Order 24.6 'Revocation or alteration by recommendation in report' – The local authority, on a recommendation in a report by the Chairperson, Chief Executive, or any committee or subcommittee, may revoke or alter all or part of a resolution passed by a previous meeting. The Chief Executive must give at least two clear working days' notice of any meeting that will consider a revocation or alteration recommendation.

Note that committees are responsible for appointing their own Chairperson.

² The Northland Regional Council appoints two members to the Board with the second member being Councillor Carr.

³ To note that the Boards's founding legislation, TOR, Standing Orders are silent on the provision of an alternate/proxy member. However, this is a model that has been applied for other formal meetings, for example the Regional Transport Committee.

⁴ This appointment is in addition to Councillors Jones (*Chair*), Blackwell, Carr, Craw , Crawford (*Ex-officio*) and also council's Independent Consultant, Independent Risk Advisor and two Independent Tangata Whenua Advisors.

⁵ Note Councillor Crawford is the third member of the Infrastructure Committee.

7.
 - a) That Councillor Geoff Crawford be replaced by Councillor Jack Craw as Chair of the Biosecurity and Biodiversity Working Party.⁶
 - b) That Councillor Crawford remains a member of the Biosecurity and Biodiversity Working Party.
 - c) That Councillor Joe Carr be removed as a member of the Biosecurity and Biodiversity Working Group.
8.
 - a) That Councillors Joe Carr and John Blackwell and be replaced by Councillors Amy Macdonald, Marty Robinson and Rick Stolwerk as members of the Natural Resources Working Party.
 - b) That Councillor Crawford, as Chair of council and hence ex-officio of all working parties, remains a member of the Natural Resources Working Party.
9. That Councillor Marty Robinson be appointed as the alternate Co-Chair of the Te Taitokerau Māori and council Working Party.

Carried

Secretarial Note: Appreciation was extended to all elected members for the collegial manner in which the distribution of roles had been addressed.

Northland | Forward Together - Revised strategic collaboration document (Item 7.7)

Report from Darryl Jones, Economist

Moved (Craw/Blackwell)

1. That the report 'Northland Forward Together - Revised strategic collaboration document' by Darryl Jones, Economist and dated 7 June 2024, be received.
2. That council adopt *Northland Forward Together I Te Taitokerau Kōkiri Ngātahi* as the shared strategic collaboration document for Northland local government.
3. That council approve Council Chair Geoff Crawford to sign *Northland Forward Together I Te Taitokerau Kōkiri Ngātahi*.

Carried

Secretarial Note: It was stressed that the four Northland councils must be 'speaking in unity for Northland' and the Northland | Forward Together strategic collaboration document supported this.

⁶ Recommendation 7a is revoking the council decision of 28 November 2023.

Retrospective approval — Local Government (Electoral Legislation and Māori Wards and Māori Constituencies) Amendment Bill (Item 7.8)

Report from Julian Hansen, Kaiārahi Kaupapa Māori - Senior Māori Technical Advisor

Moved (Robinson/Craw)

1. That the report 'Retrospective approval — Local Government (Electoral Legislation and Māori Wards and Māori Constituencies) Amendment Bill' by Julian Hansen, Kaiārahi Kaupapa Māori - Senior Māori Technical Advisor and dated 5 June 2024, be received.
2. That council retrospectively approve the attached submission on the Local Government (Electoral Legislation and Māori Wards and Māori Constituencies) Amendment Bill.

Carried

(Councillor Blackwell voted against the motion)

Caulerpa Response Plan (Supplementary Item 7.9)

Report from Don McKenzie, Pou Tiaki Pūtaiao - GM Biosecurity; Simon Crabb, Finance Manager and Bruce Howse, Pou Taumatua – Group Manager Corporate Services

Moved (Craw/Blackwell)

1. That the supplementary report 'Caulerpa Response Plan' by Don McKenzie, Pou Tiaki Pūtaiao - GM Biosecurity; Simon Crabb, Finance Manager and Bruce Howse, Pou Taumatua – Group Manager Corporate Services and dated 20 June 2024, be received.⁷
2. That council supports the withdrawal of \$1M from the Long-Term Investment fund to pay for ongoing removal of Caulerpa, and repairs and maintenance on the barge and other equipment, subject to MPI confirming in writing that they will provide reimbursement in full.

Carried

Secretarial Note: A letter to be drafted to the Minister and MPI to confirm council's resolution and that funding was subject to reimbursement in full.

Chair's Report to Council (Item 8.1)

Report from Rae Hetaraka, Executive Assistant to the Chair

Moved (Stolwerk/Robinson)

That the report 'Chair's Report to Council' by Rae Hetaraka, Executive Assistant to the Chair and dated 10 June 2024, be received.

Carried

⁷ This recommendation was in accordance with section 46A(7) of the Local Government Official Information and Meetings Act 1987

Chief Executive's Report to Council (Item 8.2)

Report from Jonathan Gibbard, Tāhūhū Rangapū - Chief Executive Officer

Moved (Carr/Blackwell)

That the report 'Chief Executive's Report to Council' by Jonathan Gibbard, Tāhūhū Rangapū - Chief Executive Officer and dated 11 June 2024, be received.

Carried

Secretarial Note;

- *Confirmation was provided that the surveillance team for the new marine protected areas were currently focussed on education. However formal enforcement would commence in September 2024.*
- *It was advised that while the Ahipara Wastewater Treatment Plant was on track to have the new SCUUV installed, the reporting was for a full year so the effects would take time to revert to a favourable position. Staff to consider how additional reporting could be included to demonstrate the improvement in the short term.*
- *Assurance was provided that staff had 'done a huge amount' to educate the public (and would continue to do so) regarding invasive weeds and the danger in moving such weeds between lake systems.*
- *Confirmation was provide that that sale of the Waikare vessel had been completed.*
- *The Joint Emergency Management Centre was progressing with the necessary agreements regarding the building lease, ground lease and operating costs being finalised. The initial estimate was 2.5 years from the finalisation of agreements to completion of build.*
- *The current legal proceeding regarding the replacement of consents for the Opononi Wastewater Treatment System (Hokianga) had been resolved at mediation and so would not proceed to a court hearing.*
- *Appreciation was extended to all staff involved in the successful Sika Deer Eradication Programme. Staff undertook to issue a media release to support this work and pro-actively address some of the misconceptions with regard to the programme.*
- *Confirmation was yet to be received regarding the funding arrangements for the Regional Infrastructure Fund and whether this was a grant or a loan.*

Receipt of Committee Minutes (Item 9.1)

Report from Meloney Tupou, Māori Governance and Engagement Support Admin

Moved (Carr/Blackwell)

That the unconfirmed minutes of the:

- Joint Climate Change Adaptation Committee - 27 May 2024
 - Regional Transport Committee - 2 April 2024
- be received.

Carried

Working Party Updates (Item 9.2)

Report from Meloney Tupou, Māori Governance and Engagement Support Admin

Moved (Carr/Robinson)

That the report 'Working Party Updates' be received.

Carried

Secretarial Note: Confirmation was provided that NRC was continuing to lobby MPI for funding for Manchurian Rice Grass removal and would provide a further update to council in due course.

Kaupapa ā Roto/Business with Public Excluded (Item 10.0)

Moved (Stolwerk/Jones)

1. That the public be excluded from the proceedings of this meeting to consider confidential matters.
2. That the general subject of the matters to be considered whilst the public is excluded, the reasons for passing this resolution in relation to this matter, and the specific grounds under the Local Government Official Information and Meetings Act 1987 for the passing of this resolution, are as follows:

Item No.	Item Issue	Reasons/Grounds
10.1	Confirmation of Confidential Council Minutes - 28 May 2024	The public conduct of the proceedings would be likely to result in disclosure of information, as stated in the open section of the meeting -.
10.2	MMH Director Nomination Committee	The public conduct of the proceedings would be likely to result in disclosure of information, the withholding of which is necessary to protect the privacy of natural persons, including that of deceased natural persons s7(2)(a).

3. That the Independent Tangata Whenua Advisor be permitted to stay during business with the public excluded.

Carried

Open Meeting

Moved (Stolwerk/Blackwell)

That the council resumes in open meeting.

Carried

Confirmation of confidential resolutions in open meeting

The confidential resolutions confirmed in open meeting were as follows:

Confirmation of Confidential Minutes - 28 May 2024 (Item 10.1)

Report from Chris Taylor, Governance Specialist

Moved (Stolwerk/Blackwell)

1. That the confidential minutes of the council meeting held on 28 May 2024 be confirmed as a true and correct record and that these be duly authenticated with the Chair's electronic signature.

Carried

MMH Director Nomination Committee (Item 10.2)

Report from Bruce Howse, Pou Taumatua – Group Manager Corporate Services

Moved (Craw/Robinson)

1. That the report 'MMH Director Nomination Committee' by Bruce Howse, Pou Taumatua – Group Manager Corporate Services and dated 19 June 2024, be received.

Carried

It was further moved (Carr/Blackwell)

1. That Chair Crawford, Councillor Stolwerk and Councillor Carr are appointed as members to the Nomination Committee.

Carried

It was further moved (Craw/Blackwell)

3. That Chair Crawford be appointed as the Chair of the Nomination Committee.
4. That council resolves to not depart from the NRC Director Appointment Policy and the MOU between NRC and MMH.

Carried

Whakamutunga (Conclusion)

The meeting concluded at 11.56am with a karakia by the Māori Cultural Advisor.

Confirmed as a true and correct record 23 July 2024



Chair Geoff Crawford

