

## Northland Regional Council Minutes

Meeting held in the Council Chambers, 36 Water Street, Whangarei  
on Tuesday 24 June 2025, commencing at 10.15am

### Tuhinga/Present:

Chairperson, Geoff Crawford (*Via audio-visual link from 11.15am to 12.20pm*)

Deputy Chairperson, Tui Shortland

Councillors:

John Blackwell

Joe Carr

Jack Craw

Peter-Lucas Jones (*Via audio-visual link*)

Amy Macdonald

Marty Robinson (*Via audio-visual link from 10.51 to 11.16am*)

Rick Stolwerk (*Via audio-visual link*)

### I Tae Mai/In Attendance:

#### Full Meeting

Independent Risk Advisor

Tāhūhū Rangapū - Chief Executive Officer

Pou Taumatua – GM Corporate Services

Pou Manawhakahaere - GM Governance and Engagement

Pou Whakaritenga - GM Regulatory Services

Group Manager - Community Resilience

Pou Tiaki Pūtaiao - GM Biosecurity

Planning and Policy Manager

Translator (*Via audio-visual link*)

Māori Engagement and Governance Support Administration

Governance Specialist

#### Part Meeting

Independent Investment Advisor (*Via audio-visual link*)

Rautaki Consultant (*Via audio-visual link*)

Sport Northland Places and Spaces Manager

Corporate Strategy Manager

Finance Manager

Financial Planning Manager

Strategic Projects and Facilities Manager

Senior Policy Planner

Policy Specialist – Freshwater

Policy Specialist

Financial Accountant

Financial Planning Accountant

Corporate Planning Specialist (*Via audio-visual link*)

Digital Experience Support

*Secretarial Note: In the absence of the Chair, the Deputy Chair presided over proceedings and declared the meeting open at 10.16am. The meeting commenced with an opening karakia by the GM – Governance and Engagement.*

## **Ngā whakapāha/Apologies (Item 1.0)**

### **Moved (Blackwell/Macdonald)**

That the apologies from Councillor Robinson and the Independent Tangata Whenua Advisor, George Riley, for non-attendance be received.

**Carried**

*Secretarial Note: Despite lodging an apology, Councillor Robinson joined the meeting via audio visual link from 10.51 to 11.16am).*

## **Nga whakapuakanga/Declarations of Conflicts of Interest (Item 2.0)**

It was advised that councillors should make declarations item-by-item as the meeting progressed.

## **Confirmation of Minutes - 27 May 2025 (Item 5.1)**

**Report from Meloney Tupou, Māori Governance and Engagement Support Admin**

### **Moved (Craw/Carr)**

That the minutes of the council meeting held on 27 May 2025, be confirmed as a true and correct record and that these be duly authenticated with the Chair's electronic signature.

**Carried**

## **Receipt of Action Sheet (Item 5.2)**

**Report from Chris Taylor, Governance Specialist**

### **Moved (Macdonald/Blackwell)**

That the action sheet be received.

**Carried**

## **Constitution of Northport Group Limited (Item 6.1)**

**Report from Bruce Howse, Pou Taumatua – Group Manager Corporate Services**

### **Moved (Carr/Blackwell)**

1. That the report 'Constitution of Northport Group Limited' by Bruce Howse, Pou Taumatua – Group Manager Corporate Services and dated 28 May 2025, be received.
2. That council retrospectively authorises the Chief Executive Officer's approval of the Constitution of Northport Group Limited (*included as Attachment 1*).

**Carried**

## Financial Report to May 2025 (Item 6.2)

Report from Taka Skipwith, Financial Accountant

Moved (Shortland/Macdonald)

That the report 'Financial Report to May 2025' by Taka Skipwith, Financial Accountant and dated 9 June 2025, be received.

Carried

Secretarial Note:

- *There was a \$609k favourable surplus at the end of May 2025.*
- *It was anticipated there would be approximately \$1.1m of carry forwards in relation to contracts already in place for services (which would be presented to council in August).*
- *It was proposed that \$1.07m of the surplus be applied as a rates reduction for the 2025/26 financial year (equating to approximately 2%).*
- *Item 7.2 was addressed prior to Item 7.1 based on legal advice.*

## Rates for the year 1 July 2025 to 30 June 2026 (Item 7.1)

Report from Kyla Carlier, Corporate Strategy Manager; Casey Mitchell, Financial Planning Manager and Kim Harvey, Financial Planning Accountant

Moved (Craw/Stolwerk)

1. That the report 'Rates for the year 1 July 2025 to 30 June 2026 by Kyla Carlier, Corporate Strategy Manager; Casey Mitchell, Financial Planning Manager and Kim Harvey, Financial Planning Accountant and dated 11 June 2025, be received.
2. That the Northland Regional Council considers that the section 100T Biosecurity Act 1993 analysis set out in the funding impact statement of the Amended Long Term Plan 2024-2034 continues unchanged for the purpose of setting the Pest Management Rate.
3. That the Northland Regional Council resolves to set the following rates under the Local Government (Rating) Act 2002 (LGRA) for the financial year commencing 1 July 2025 and ending 30 June 2026:

**a. Targeted council services rate**

A targeted rate as authorised by the LGRA. The rate is calculated on the total projected capital value, as determined by the certificate of projected valuation of each constituent district in the Northland region. An additional \$1.73 (including GST) per each rateable separately used or inhabited part (SUIP) of a rating unit is to be assessed across the Whangārei constituency to provide funding for the ongoing maintenance of the Hātea River Channel. The rate is differentiated by location in the Northland region and assessed as a fixed amount per each rateable separately used or inhabited part (SUIP) of a rating unit in the Far North and Whangareī Districts, and on each rateable rating unit (RU) in the Kaipara district. The rate is set as follows:

	<u>Including GST</u>
Far North District	\$195.63 per SUIP
Kaipara District	\$262.32 per RU
Whangareī District	\$229.89 per SUIP

The Whangareī District targeted council services rate amount of \$229.89 (including GST) per SUIP **includes** funding for the Hātea River Channel amount of \$1.73 (including GST).

**b. Targeted land and freshwater management rate**

A targeted rate as authorised by the LGRA. The rate is assessed on the land value of each rateable rating unit in the region. The rate is set per dollar of land value. The rate per dollar of land value is different for each constituent district because the rate is allocated based on projected land value, as provided for in section 131 of the LGRA. The rate is set as follows:

**Including GST**

Far North District	\$0.0002886 per dollar of land value
Kaipara District	\$0.0002983 per dollar of land value
Whangarei District	\$0.0003026 per dollar of land value

**Targeted pest management rate**

A targeted rate as authorised by the LGRA. The rate is calculated on the total projected capital value, as determined by the certificate of projected valuation of each constituent district in the Northland region. The rate is a fixed amount, differentiated by location in the Northland region. The rate will be assessed on each rateable separately used or inhabited part (SUIP) of a rating unit in the Far North and Whangarei Districts, and each rateable rating unit (RU) in the Kaipara District. The rate is set as follows:

**Including GST**

Far North District	\$93.86 per SUIP
Kaipara District	\$125.86 per RU
Whangarei District	\$109.47 per SUIP

**c. Targeted flood infrastructure rate**

A targeted rate as authorised by the LGRA. The rate is a fixed amount assessed on each rateable separately used or inhabited part (SUIP) of a rating unit in the Far North and Whangarei Districts, and each rateable rating unit (RU) in the Kaipara District. The rate is set as follows:

**Including GST**

Far North District	\$41.66 per SUIP
Kaipara District	\$41.66 per RU
Whangarei District	\$41.66 per SUIP

**d. Targeted emergency and hazard management rate**

A targeted rate as authorised by the LGRA. The rate is calculated on the total projected capital value, as determined by the certificate of projected valuation of each constituent district in the Northland region. The rate is a fixed amount, differentiated by location in the Northland region. The rate will be assessed on each rateable separately used or inhabited part (SUIP) of a rating unit in the Far North and Whangarei Districts, and each rateable rating unit (RU) in the Kaipara District. The rate is set as follows:

**Including GST**

Far North District	\$57.71 per SUIP
Kaipara District	\$77.38 per RU
Whangarei District	\$67.31 per SUIP

**e. Targeted regional rescue services rate**

A targeted rate as authorised by the LGRA. The rate is a fixed amount assessed on each rateable separately used or inhabited part (SUIP) of a rating unit in the Far North and Whangarei Districts, and each rateable rating unit (RU) in the Kaipara District. The rate is set as follows:

	<u>Including GST</u>
Far North District	\$8.87 per SUIP
Kaipara District	\$8.87 per RU
Whangarei District	\$8.87 per SUIP

**f. Targeted regional sporting facilities rate**

A targeted rate as authorised by the LGRA. The rate is a fixed amount assessed on each rateable separately used or inhabited part (SUIP) of a rating unit in the Far North and Whangarei Districts, and each rateable rating unit (RU) in the Kaipara District. The rate is set as follows:

	<u>Including GST</u>
Far North District	\$16.09 per SUIP
Kaipara District	\$16.09 per RU
Whangarei District	\$16.09 per SUIP

**g. Targeted regional economic development rate**

A targeted rate as authorised by the LGRA. This rate is assessed on the land value of each rateable rating unit in the region. The rate is set per dollar of land value. The rate per dollar of land value is different for each constituent district because the rate is allocated based on projected land value, as provided for in section 131 of the LGRA. The rate is set as follows:

**Including GST**

Far North District	\$0.0000290 per dollar of land value
Kaipara District	\$0.0000300 per dollar of land value
Whangarei District	\$0.0000304 per dollar of land value

**h. Targeted Whangārei transport rate**

A targeted rate as authorised by the LGRA. The rate is a fixed amount assessed on each rateable separately used or inhabited part of a rating unit (SUIP) in the Whangarei District. The rate is set as follows:

	<u>Including GST</u>
Whangarei District	\$30.40 per SUIP

**i. Targeted Far North transport rate**

A targeted rate as authorised by the LGRA. The rate is a fixed amount assessed on each rateable separately used or inhabited part of a rating unit (SUIP) in the Far North District. The rate is set as follows:

	<u>Including GST</u>
Far North District	\$8.54 per SUIP

**j. Targeted Awanui River management rate**

A targeted rate set under the LGRA, set differentially by location and area of benefit as defined in the Awanui River Flood Management Plan, and as defined in the following table:

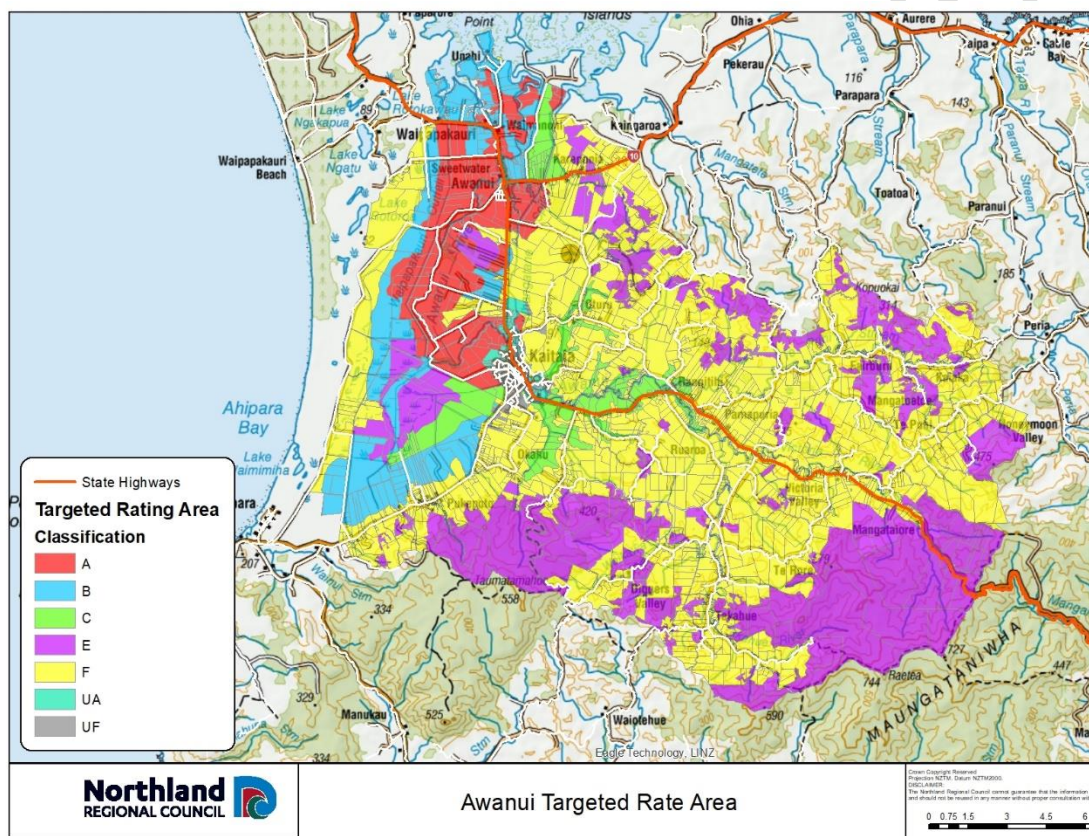
The rate is set differentially as follows:

Category	Description	Rate <u>including GST</u>
UA	Urban rate class UA (floodplain location) \$268.31 direct benefit plus \$26.23 indirect benefit per separately used or inhabited part of a rating unit (SUIP).	\$294.54 per SUIP
UA	Urban rate class UA – commercial differential.	\$883.62 per SUIP
UF	Urban rate classes UF (higher ground) \$26.23 direct benefit plus \$26.23 indirect benefit per separately used or inhabited part of a rating unit (SUIP).	\$52.46 per SUIP
UF	Urban rate class UF – commercial differential.	\$157.38 per SUIP
Rural	Rural rate differentiated by class, \$10.99 per separately used or inhabited part of a rating unit (SUIP) of indirect benefit plus a rate per hectare for each of the following classes of land in the defined Kaitaia flood rating district as illustrated in the following maps and table.	\$10.99 per SUIP

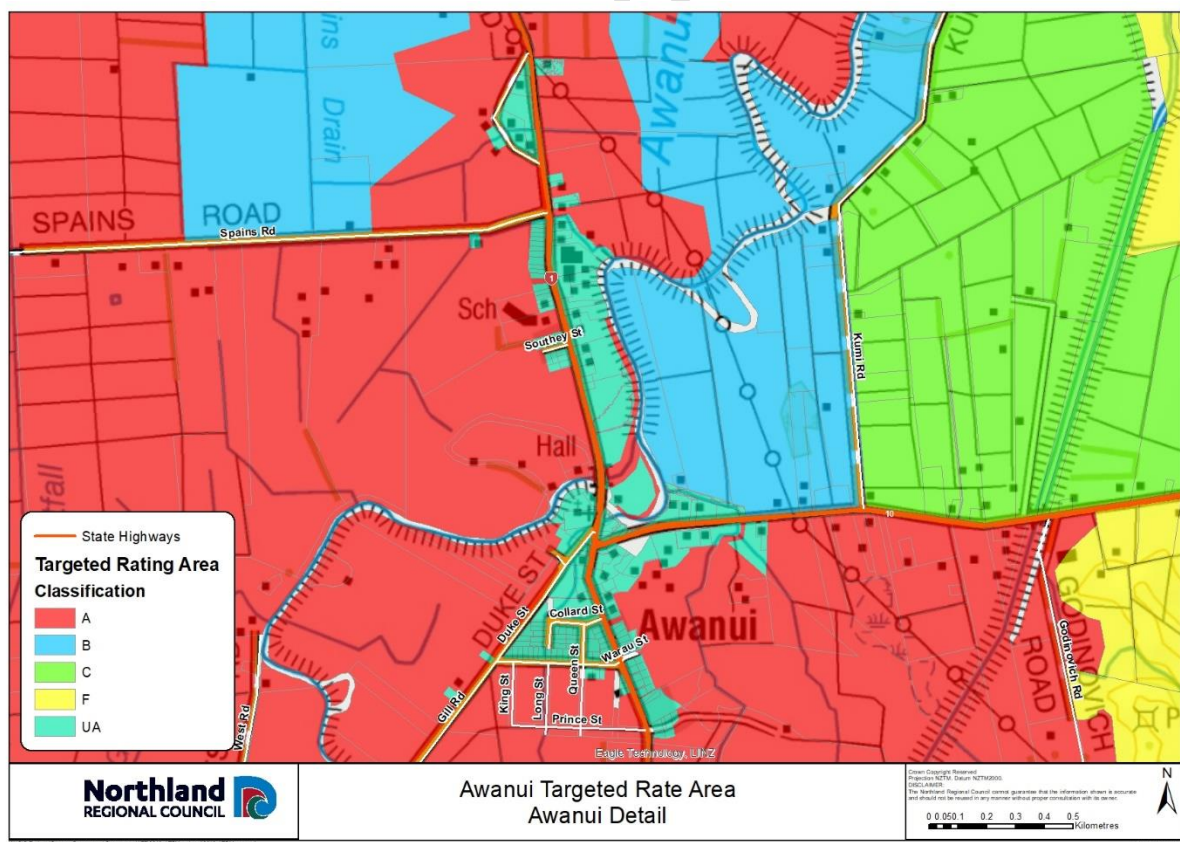
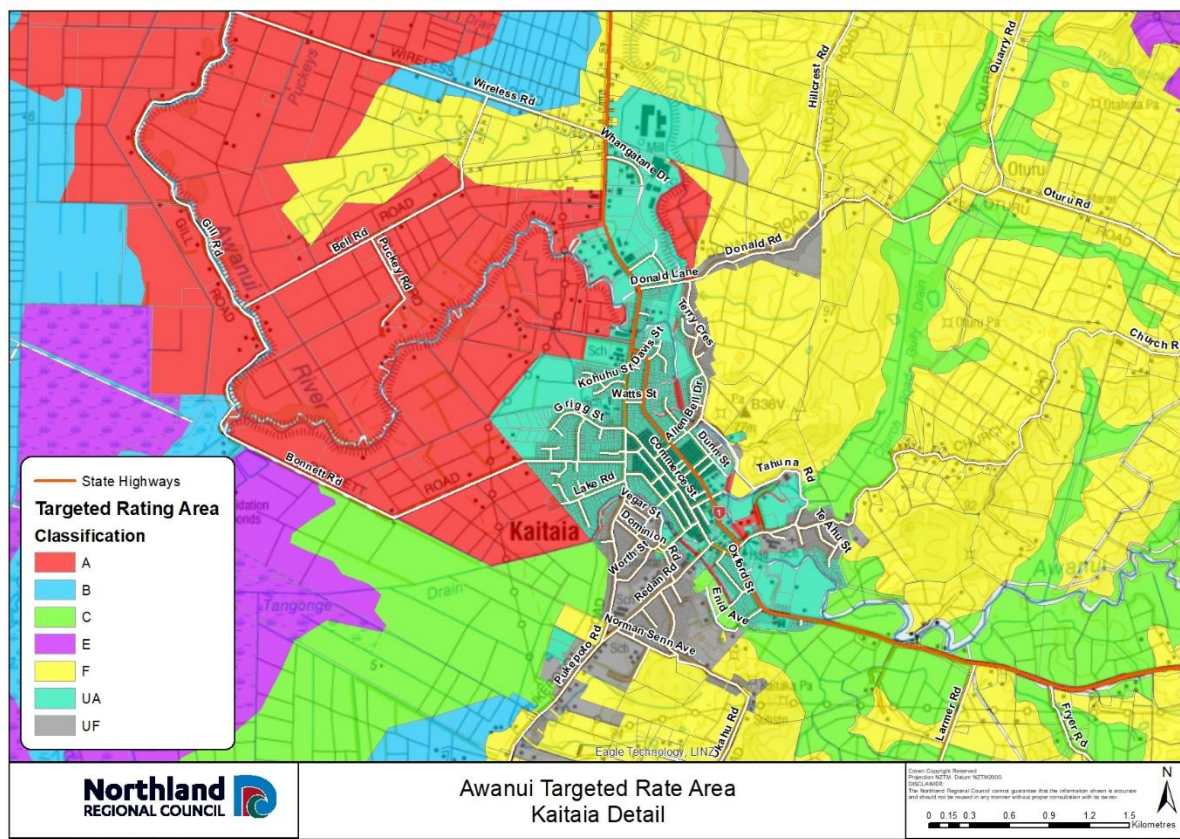
Class	Description	Rate <u>including GST</u>
A & B	High benefit: rural land which receives high benefit from the Awanui scheme works due to reduced river flooding risk and/or reduced duration of flooding and/or coastal flooding – all rateable land other than in the commercial differential.	\$23.39 per hectare

A & B commercial differential	\$70.17 per hectare
C Moderate benefit: land floods less frequently and water clears quickly – all rateable land other than in the commercial differential.	\$10.52 per hectare
C commercial differential	\$31.56 per hectare
F Contributes runoff waters and increases the need for flood protection - all rateable land other than in the commercial differential.	\$0.72 per hectare
F commercial differential	\$2.16 per hectare

The rating classifications are illustrated in the following maps:







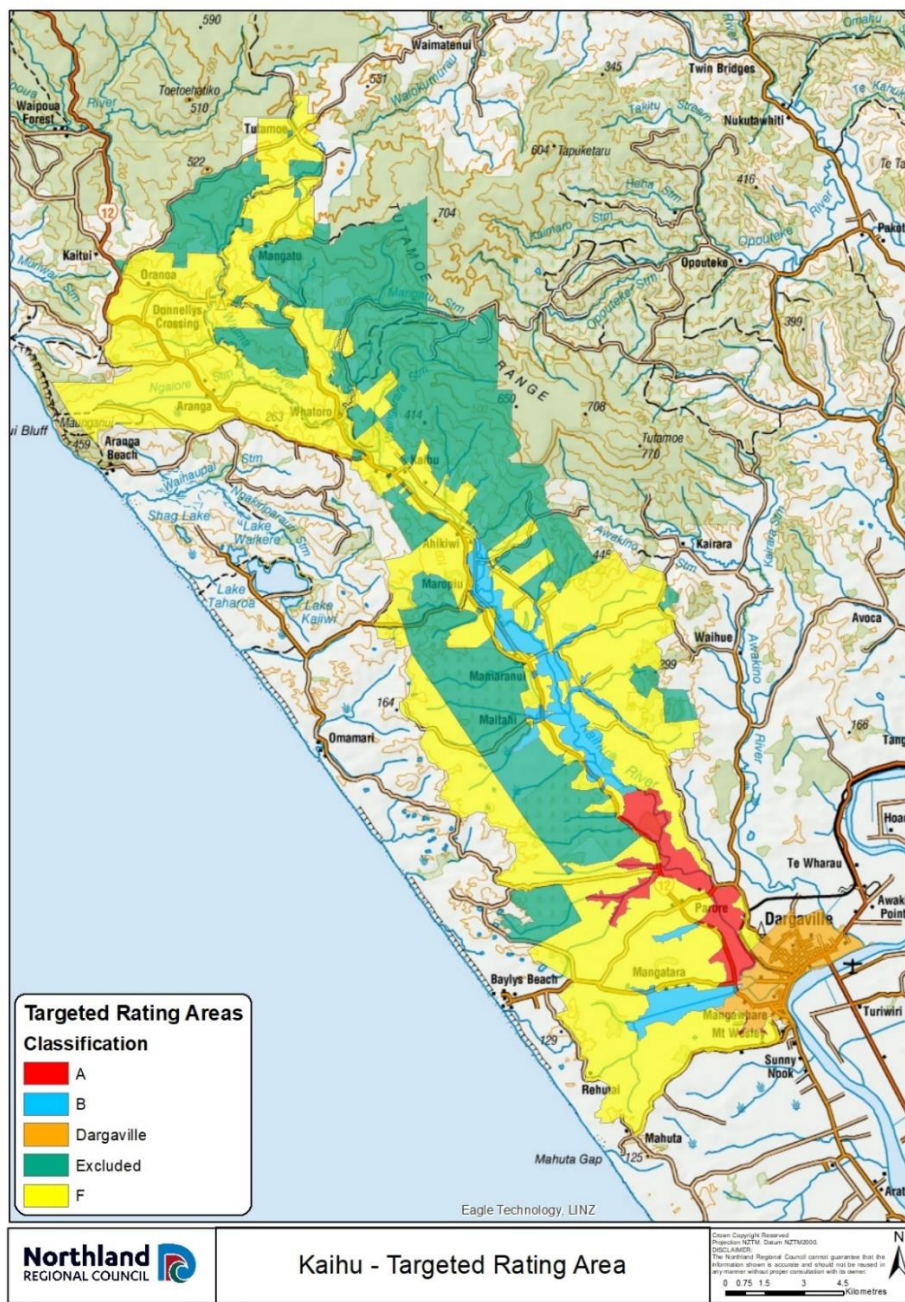


**I. Targeted Kaihū River management rate**

A targeted rate set under the LGRA, and set differentially by location and area of benefit as defined in the following table:

<b>Class</b>	<b>Description</b>	<b>Rate <u>Including GST</u></b>
A	Land on the floodplain and side valleys downstream of Rotu Bottleneck.	\$23.13 per hectare
B	Land on the floodplain and tributary side valleys between Ahikiwi and the Rotu Bottleneck and in the Mangatara Drain catchment upstream of SH12.	\$11.39 per hectare
F	Land within the Kaihū River rating area not falling within Class A and Class B, or the excluded area.	\$1.60 per hectare
<b>Urban Contribution</b> – A contribution from the Kaipara District Council instead of a separate rate per property.		\$5,015 per annum

The rating classifications are illustrated in the following map:



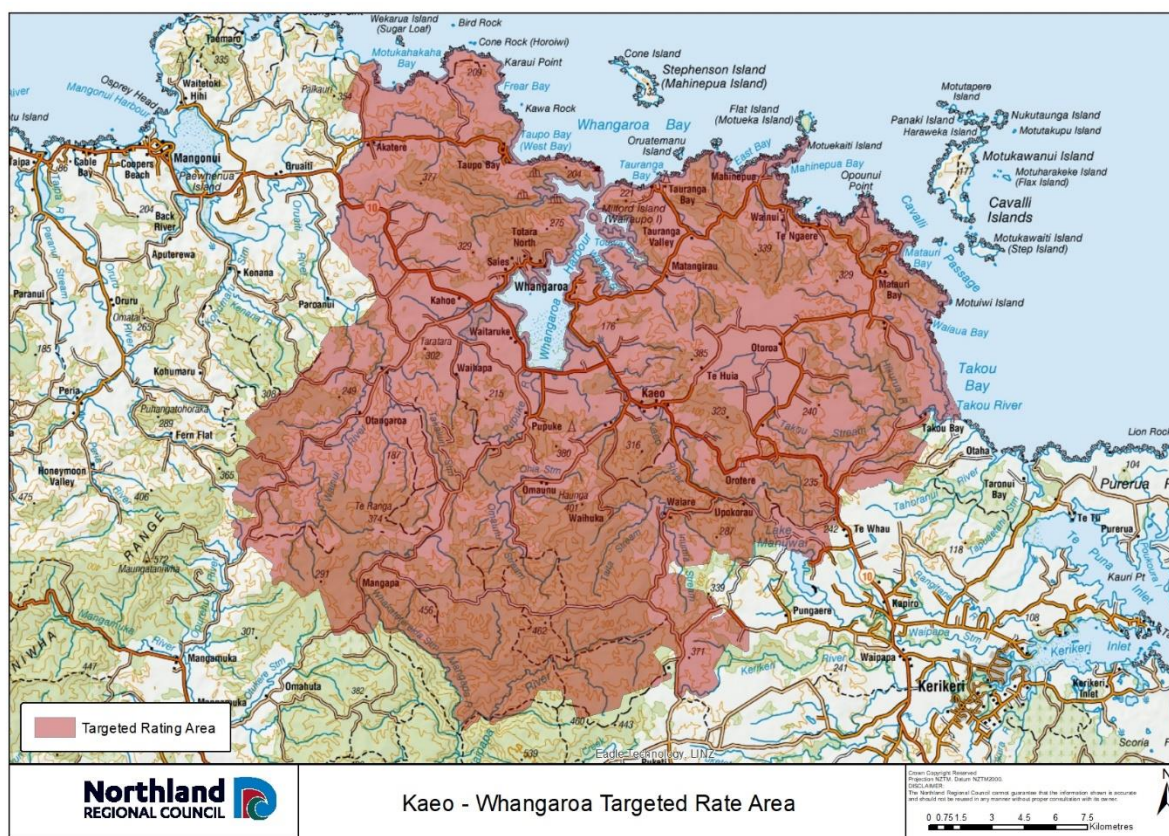
#### m. Targeted Kaeo-Whangaroa rivers management rate

A targeted rate set under the LGRA, set on a uniform basis in respect of each rateable separately used or inhabited part of a rating unit falling within the former Whangaroa Ward rating rolls of 100-199, as illustrated in the map below:

Former Whangaroa Ward

**Including GST**

\$47.67 per SUIP

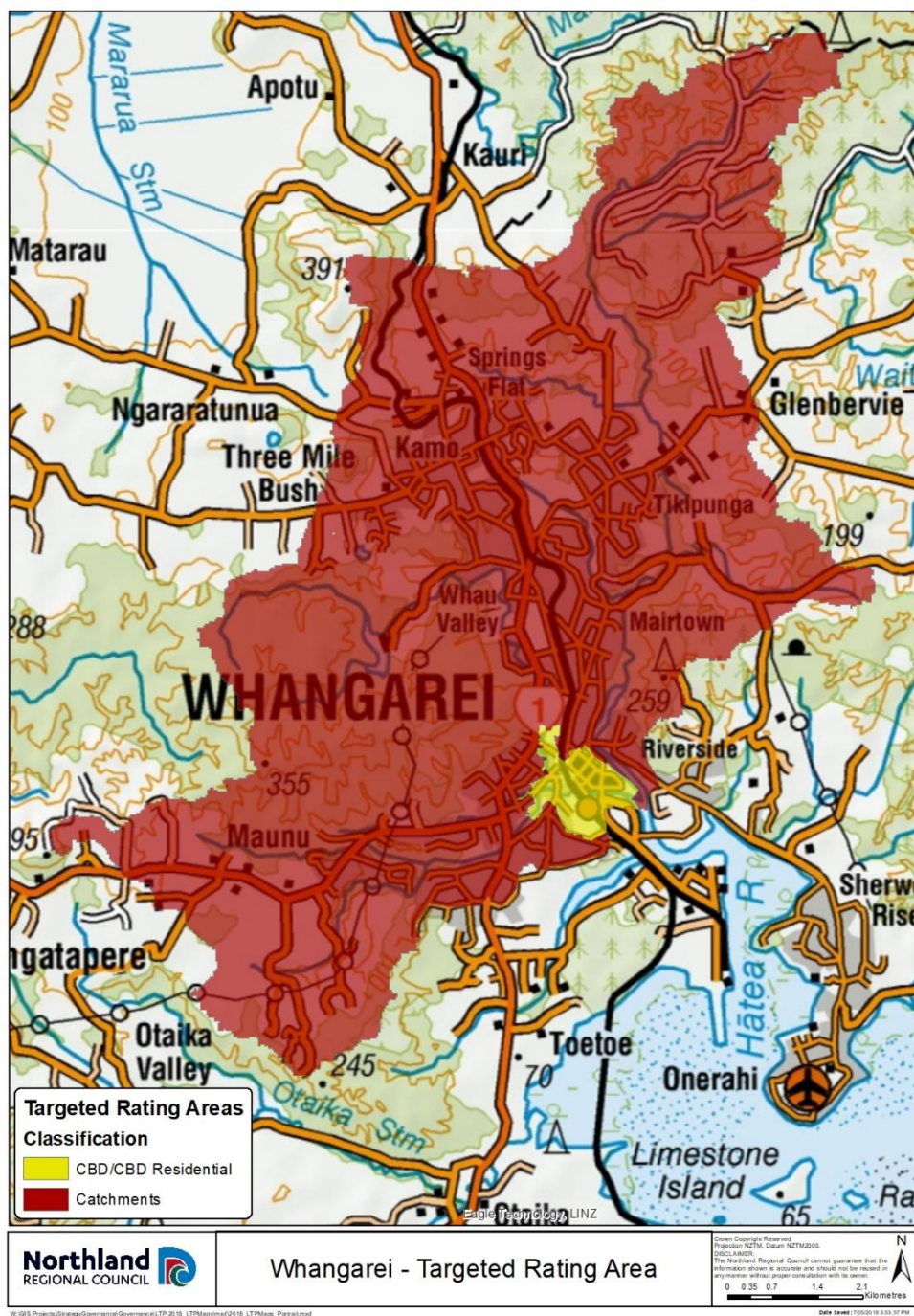


#### n. Targeted Whangārei urban rivers management rate

A targeted rate set under the LGRA and assessed on all rateable properties defined by reference to the differential categories and differentiated by location (illustrated in the map below) and, for some categories, land use. It is set as a fixed amount per each rateable separately used or inhabited part (SUIP) of a rating unit, as follows:

Category		<u>Including GST</u>
1	Commercial properties located in the Whangārei Central Business District flood area:	\$333.97 per SUIP
2	Residential properties located in the Whangārei Central Business District flood area:	\$175.76 per SUIP
3	Properties located in the contributing water catchment area (including properties falling in the Waiarohia, Raumanga, Kirikiri and Hātea River Catchments):	\$40.34 per SUIP





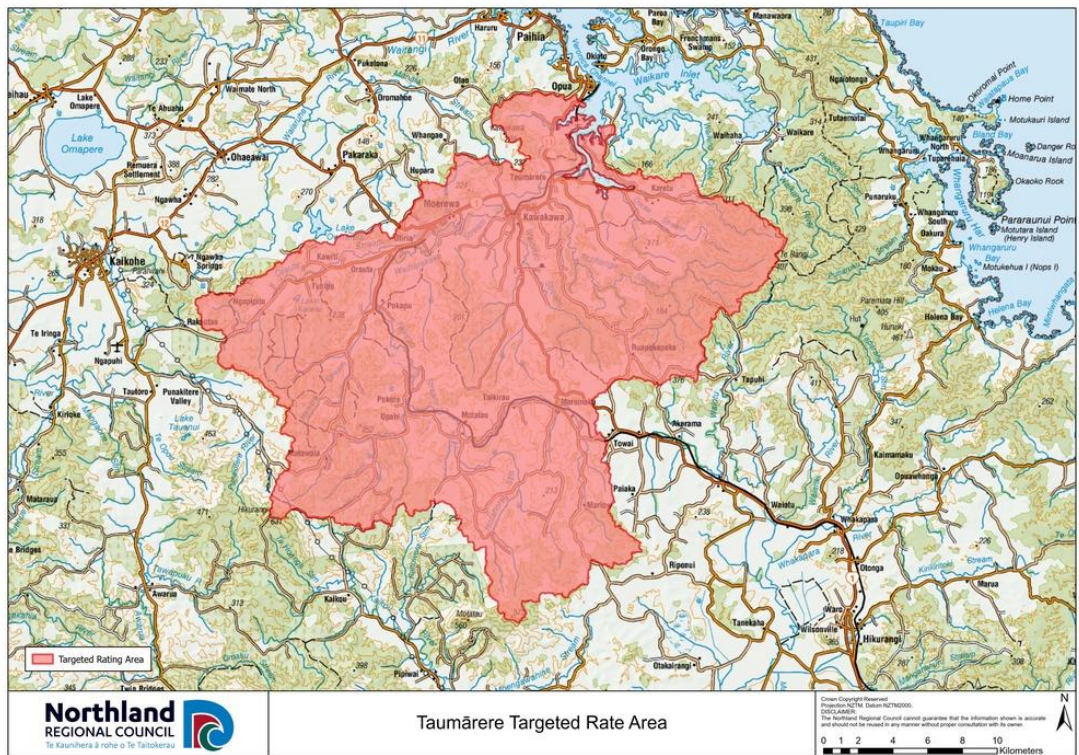
**o. Targeted Taumārere rivers management rate**

A targeted rate set under the LGRA, set on a uniform basis in respect of each rateable separately used or inhabited part of a rating unit located within the Far North District and/or intersecting the Taumārere Rivers Management Rate catchment area, as illustrated in the map below:

Taumārere

**Including GST**

\$68.15 per SUIP



4. That the Northland Regional Council resolves the following with respect to payment dates for rates and the penalty regime:

**Far North District constituency:**

The Northland Regional Council resolves that all rates within the Far North District constituency are payable in four equal instalments, on the following dates:

Instalment	Due date for payment
Instalment 1	20 August 2025
Instalment 2	20 November 2025
Instalment 3	20 February 2026
Instalment 4	20 May 2026

The Northland Regional Council resolves to add the following penalties to unpaid Far North District constituency rates:

- In accordance with section 58(1)(a) of the LGRA, a penalty of ten percent (10%) will be added to any portion of each instalment of Far North District constituency rates assessed in the 2025/26 financial year that is unpaid on or by the respective due date for payment as stated above. These penalties will be added on the following dates:

Instalment	Date penalty will be added
Instalment 1	27 August 2025
Instalment 2	27 November 2025
Instalment 3	27 February 2026
Instalment 4	27 May 2026

The Northland Regional Council resolves to charge postponement fees in accordance with its rating and postponement policies for the Far North District constituency as follows:

- application fee: \$300
- administration fee: \$50 per annum
- financing fee on all postponements: currently set at 3.00% per annum but may vary to match council's average cost of funds.

**Kaipara District constituency:**

The Northland Regional Council resolves that all rates within the Kaipara District constituency are payable in four equal instalments, on the following dates:

Instalment	Due date for payment
Instalment 1	20 August 2025
Instalment 2	20 November 2025
Instalment 3	20 February 2026
Instalment 4	20 May 2026

The Northland Regional Council resolves to add the following penalties to unpaid Kaipara District constituency rates:

- In accordance with section 58(1) (a) of the LGRA, a penalty of ten percent (10%) of so much of each instalment of the Kaipara District constituency rates assessed in the 2025/26 financial year that are unpaid after the relevant due date for each instalment will be added on the relevant penalty date for each instalment stated below, except where a ratepayer has entered into an arrangement by way of direct debit authority, and honours that arrangement. These penalties will be added on the following dates:

Instalment	Date penalty will be added
Instalment 1	21 August 2025



Instalment 2	21 November 2025
Instalment 3	21 February 2026
Instalment 4	21 May 2026

- In accordance with section 58(1)(b) of the LGRA, a penalty of ten per cent (10%) of the amount of all Kaipara District constituency rates (including any penalties) from any previous financial years that are unpaid on 01 July 2025 will be added on 03 July 2025.
- In accordance with section 58(1)(c) of the LGRA, a penalty of ten per cent (10%) of the amount of all Kaipara District constituency rates to which a penalty has been added under the point immediately above and which remain unpaid on 05 January 2026 will be added on 06 January 2026.

#### **Whangarei District constituency:**

The Northland Regional Council resolves that all rates within the Whangarei District constituency are payable in four equal instalments, on the following dates:

<b>Instalment</b>	<b>Due date for payment</b>
Instalment 1	20 August 2025
Instalment 2	20 November 2025
Instalment 3	20 February 2026
Instalment 4	20 May 2026

The Northland Regional Council resolves to add the following penalties to unpaid Whangarei District constituency rates:

- In accordance with section 58(1)(a) of the LGA, a penalty of ten percent (10%) will be added to any portion of each instalment of Whangarei District constituency rates assessed in the 2025/26 financial year that is unpaid on or by the respective due date for payment as stated above. These penalties will be added on the following dates:

<b>Instalment</b>	<b>Date penalty will be added</b>
Instalment 1	22 August 2025
Instalment 2	24 November 2025
Instalment 3	24 February 2026
Instalment 4	22 May 2026

- In accordance with section 58(1)(b) of the LGRA, a penalty of ten per cent (10%) will be added to any Whangarei District constituency rates (including any penalties) from any financial year prior to 1 July 2025 that still remain unpaid as at 1 July 2025. This penalty will be added on 9 September 2025.

The Northland Regional Council resolves to charge postponement fees in accordance with its rating and postponement policies for the Whangarei District constituency.

No discount will be given for early payment of rates.

The district councils have advised that their rates adoption dates are as follows:

- Far North District Council – 25 June 2025
- Kaipara District Council – 25 June 2025
- Whangarei District Council – 02 July 2025

Should their collection and/or penalty dates change through the rate setting process we will need to amend our resolution accordingly.

**Carried**

*Secretarial Note:*

- *Item 7.2 was addressed prior to Item 7.1 based on legal advice.*
- *Appreciation was extended to all involved in the Annual Plan process and the 'good constructive thinking' of staff to find efficiencies and savings to reduce rates.*

**Adoption of Mahere-ā-Tau 2025-26 - Annual Plan 2025-26 (Item 7.2)**

**Report from Robyn Broadhurst, Corporate Planning Specialist and Kyla Carlier, Corporate Strategy Manager**

**Moved (Stolwerk/Macdonald)**

1. That the report 'Adoption of Mahere-ā-Tau 2025-26 - Annual Plan 2025-26' by Robyn Broadhurst, Corporate Planning Specialist and Kyla Carlier, Corporate Strategy Manager and dated 23 April 2025, be received.
2. That in accordance with section 95 of the Local Government Act 2002, the council adopts the Annual Plan 2025/26, as included in Attachment 1 (*pertaining to Item 7.2 of the 24 June 2025 council agenda*).
3. That council authorises the Group Manager – Corporate Services to make any necessary minor drafting, typographical, rounding, or presentation corrections to the Annual Plan 2025/26 prior to final publication of the document.

**Carried**

**Proposed 2025 SIPO (Item 7.3)**

**Report from Bruce Howse, Pou Taumatua – Group Manager Corporate Services**

**Moved (Stolwerk/Blackwell)**

1. That the report 'Proposed 2025 SIPO' by Bruce Howse, Pou Taumatua – Group Manager Corporate Services and dated 4 June 2025, be received.
2. That council approves the 2025 SIPO, as presented in Attachment 1 (*pertaining to Item 7.3 of the 24 June 2025 council agenda*).
3. That council approves the updated Treasury Risk Management Policy, as presented in Attachment 2.
4. That council approves the updated Investment Committee Terms of Reference, as presented in Attachment 3.

**Carried**

**Secretarial Note:**

- *The Investment Committee had formally endorsed the proposed changes to the SIPO.*
- *Appreciation was extended to all involved in the review of the SIPO.*
- *It was stressed that all councillors needed to be kept abreast of the regular six month reporting on the SIPO.*

## **Regional Sporting Facilities Rate Allocation for 2024-2027 (Item 7.4)**

**Report from Phil Heatley, Strategic Projects and Facilities Manager**

**Moved (Stolwerk/Macdonald)**

1. That the report 'Regional Sporting Facilities Rate Allocation for 2024-2027' by Phil Heatley, Strategic Projects and Facilities Manager and dated 30 May 2025, be received.
2. That the full remaining quantum of Regional Sporting Facilities Rates collected (but unallocated) during the 2021–2024 financial years be added to the allocation for distribution in the 2024-2027 period.
3. That the following regional sporting facility projects receive an '*In Principle*' GST exclusive allocation from the cumulative Regional Sporting Facilities Rate collected during the 2021–2024 financial years as follows:
  - i. Ruakākā Wahitakaro and Northland Regional Volleyball Arena be allocated up to \$2,600,000 in 2025-2026;.
  - ii. Sportsville Dargaville Stage 2 be allocated up to \$1,200,000 in 2026-2027.
4. That the Chief Executive Officer has authority to distribute funds to each project, up to the amounts allocated, when he is satisfied that the following has been met to his satisfaction:
  - i. The project Governance Group is properly constituted and capable; and
  - ii. The project, or standalone stage, is fully or near-fully funded; and
  - iii. Any other criteria that he sees as relevant and material having taken advice.
5. That the Chief Executive Officer has discretion over fund distribution timing (before or after the dates in recommendation 2).
6. That the Chief Executive Officer refer to council if there is a material change in a project or proposed change in maximum allocation from the '*In Principle*' decision.
7. That the Chief Executive Officer report to council following the completed distribution of the 2024–2027 Regional Sporting Facilities Rate providing:
  - i. A schedule of projects with the respective grants and dates of distribution; and
  - ii. A recommendation for the allocation of any surplus rates collected.

**Carried**

## **PF2050 Future Funding (Item 7.5)**

**Report from Sam Johnson, Biosecurity Manager - Predator Free; Vicky Vajda McNab, Communications and Engagement Coordinator – Predator Free and Don McKenzie, Pou Tiaki Pūtaiao - GM Biosecurity**

### **Moved (Macdonald/Shortland)**

1. That the report 'PF2050 Future Funding' by Sam Johnson, Biosecurity Manager - Predator Free; Vicky Vajda McNab, Communications and Engagement Coordinator – Predator Free and Don McKenzie, Pou Tiaki Pūtaiao - GM Biosecurity and dated 5 June 2025, be received.
2. That council supports the reallocation of \$100,000 from the biosecurity partnerships budgets to support the PF2050 programme.

### **Carried**

#### *Secretarial Note:*

- *Staff were investigating avenues for philanthropic funding.*
- *Assurance was provided that the reallocation of funding would not affect the funding established through the Long Term Plan process for community-led pest management action in western and northern Northland or council's High Value Areas.*

## **Approval of Submission on the Proposed Kaipara District Plan (Item 7.6)**

**Report from Ingrid Kuindersma, Senior Policy Planner and Tami Woods, Policy and Planning Manager**

### **Moved (Blackwell/Craw)**

1. That the report 'Approval of Submission on the Proposed Kaipara District Plan' by Ingrid Kuindersma, Senior Policy Planner and Tami Woods, Policy and Planning Manager and dated 28 May 2025, be received.
2. That council approve the lodgement of the draft submission on the Proposed Kaipara District Plan included as Attachment One (*pertaining to Item 7.6 of the 24 June 2025 council agenda*).

### **Carried**

#### *Secretarial Note:*

- *Assurance was provided that Kaipara District Council was applying the most recent version of NRC's hazard maps.*
- *Staff to clarify the terminology of 'renewable electricity generations that could also occur in space'.*

## **Predator Free 2050 Strategy 2025-2030 - Draft submission (Item 7.7)**

**Report from April Nordstrom, Kaitātari Kaupapa Wai Māori; Sam Johnson, Biosecurity Manager - Predator Free and Leon Keefer, Policy Specialist - Freshwater**

### **Moved (Craw/Blackwell)**

1. That the report 'Predator Free 2050 Strategy 2025-2030 - Draft submission' by April Nordstrom, Kaitātari Kaupapa Wai Māori; Sam Johnson, Biosecurity Manager - Predator Free and Leon Keefer, Policy Specialist - Freshwater and dated 9 June 2025, be received.

2. That the draft submission (*included as Attachment One pertaining to Item 7.7 of the 24 June 2025 council agenda*) be approved for submission to the Department of Conservation on or before 5pm 30 June 2025.
3. That the submission be signed on behalf of council by the Chair.

**Carried**

## **Navigation Safety Bylaw 2025 (Item 7.8)**

**Report from Michael Payne, Policy Specialist and Tami Woods, Policy and Planning Manager**

### **Moved (Blackwell/Shortland)**

1. That the report 'Navigation Safety Bylaw 2025' by Michael Payne, Policy Specialist and Tami Woods, Policy and Planning Manager and dated 13 June 2025, be received.
2. That council determines under section 155(1) of the LGA that a Bylaw is the most appropriate way of addressing problems relating to the maritime safety in the region.
3. That council determines under section 155(2)(a) of the LGA that the draft Northland Regional Council Navigation Safety Bylaw 2025 is the most appropriate form of bylaw; and
4. That council determines under section 155(2)(b) of the LGA that the draft Northland Regional Council Navigation Safety Bylaw 2025 does not give rise to any implications under the New Zealand Bill of Rights Act 1990.
5. That council adopts the following documents for the purposes of consultation pursuant to section 156 of the Local Government Act 2002.
  - a) the Statement of Proposal, and
  - b) the Draft Navigation Safety Bylaw.
6. That the public notification of the 'Draft Navigation Safety Bylaw be on or before 27 June 2025.
7. That council:
  - a) confirms the Hearing Panel of Cllr Craw, Cllr Stolwerk and Cllr Blackwell, and
  - b) delegates authority to the Hearing Panel to hear submissions on the Draft Navigation Safety Bylaw, deliberate and make recommendations to council in response to submissions.
8. That council delegate to the Pou Tiaki Hapori | Group Manager Community Resilience the authority to make any necessary minor formatting, typographical, and administrative changes to the Statement of Proposal prior to formal public consultation.

**Carried**

## **Chair's Report to Council (Item 8.1)**

**Report from Rae Hetaraka, Executive Assistant to the Chair**

### **Moved (Crawford/Blackwell)**

That the report 'Chair's Report to Council' by Rae Hetaraka, Executive Assistant to the Chair and dated 29 May 2025, be received.

**Carried**

## **Chief Executive's Report to Council (Item 8.2)**

**Report from Jonathan Gibbard, Tāhūhū Rangapū - Chief Executive Officer**

**Moved (Shortland/Macdonald)**

That the report 'Chief Executive's Report to Council' by Jonathan Gibbard, Tāhūhū Rangapū - Chief Executive Officer and dated 27 May 2025, be received.

**Carried**

*Secretarial Note: Appreciation was extended to staff supporting what were described as 'amazing community events' during the Matariki celebrations.*

## **Receipt of Committee Minutes (Item 9.1)**

**Report from Meloney Tupou, Māori Governance and Engagement Support Admin**

**Moved (Carr/Macdonald)**

That the unconfirmed minutes of the:

- Kaipara Moana Remediation Joint Committee - 7 April 2025
- Audit and Risk Committee - 20 May
- Te Oneroa-a-Tōhe Board – 23 May 2025
- Investment Committee - 3 June 2025 and
- Civil Defence Emergency Management Group - 3 June 2025

be received.

**Carried**

*Secretarial Note:*

- *Appreciation was extended to the Maurikura staff for the successful growth and development of the Kaipara Moana Remediation (KMR) programme which was 'achieving a lot on the ground' and 'run efficiently [by] working with land owners to get things done' and described as going 'from strength to strength'.*
- *Clarification was provided that NRC did conduct a sediment monitoring programme for the Kaipara Harbour every five years. However, there was not a specific monitoring programme in relation to the KMR project itself.*
- *There was general agreement that a letter be drafted on behalf of council to the retired Minister Parker, who had championed the KMR programme; acknowledging his effort and funding support.*
- *Attention was drawn to the fact that the KMR programme had been nominated by Victoria University of Wellington for one of five Earthshot prizes.*

## **Working Party Updates Report (Item 9.2)**

**Report from Meloney Tupou, Māori Governance and Engagement Support Admin**

**Moved (Macdonald/Craw)**

That the report 'Working Party Updates Report' be received.

**Carried**



## Kaupapa ā Roto/Business with Public Excluded (Item 10.0)

### Moved (Shortland/Macdonald)

1. That the public be excluded from the proceedings of this meeting to consider confidential matters.
2. That the general subject of the matters to be considered whilst the public is excluded, the reasons for passing this resolution in relation to this matter, and the specific grounds under the Local Government Official Information and Meetings Act 1987 for the passing of this resolution, are as follows:

Item No.	Item Issue	Reasons/Grounds
10.1	Confirmation of Confidential Minutes - 27 May 2025	The public conduct of the proceedings would be likely to result in disclosure of information, as stated in the open section of the meeting -.
10.2	Receipt of Confidential Committee Minutes	The public conduct of the proceedings would be likely to result in disclosure of information, as stated in the open section of the meeting -.
10.3	Northport Group Limited Director Appointments	The public conduct of the proceedings would be likely to result in disclosure of information, the withholding of which is necessary to protect the privacy of natural persons, including that of deceased natural persons s7(2)(a).
10.4	Property Sales (Tranche 1 and 2) for Northport Group Ltd Transaction	The public conduct of the proceedings would be likely to result in disclosure of information, the withholding of which is necessary to protect information where the making available of the information would be likely unreasonably to prejudice the commercial position of the person who supplied or who is the subject of the information s7(2)(b)(ii), the withholding of which is necessary to enable council to carry out, without prejudice or disadvantage, commercial activities s7(2)(h) and the withholding of which is necessary to enable council to carry on, without prejudice or disadvantage, negotiations (including commercial and industrial negotiations) s7(2)(i).
10.5	Kōtuku Solar Project	The public conduct of the proceedings would be likely to result in disclosure of information, the withholding of which is necessary to protect information where the making available of the information would be likely unreasonably to prejudice the commercial position of the person who supplied or who is the subject of the information s7(2)(b)(ii), the withholding of which is necessary to enable council to carry out, without prejudice or disadvantage, commercial activities s7(2)(h) and the withholding of which is necessary to enable council to carry on, without prejudice or disadvantage, negotiations (including commercial and industrial negotiations) s7(2)(i).
10.6	Lake Ōmāpere Restoration Project	The public conduct of the proceedings would be likely to result in disclosure of information, the withholding of which is necessary to protect information which is subject to an obligation of confidence or which any person has been or could be compelled to provide under the authority of any enactment, where the making

		available of the information would be likely to prejudice the supply of similar information, or information from the same source, and it is in the public interest that such information should continue to be supplied s7(2)(c)(i).
10.7	Oruku Landing Conference and Events Centre	The public conduct of the proceedings would be likely to result in disclosure of information, the withholding of which is necessary to protect information where the making available of the information would be likely unreasonably to prejudice the commercial position of the person who supplied or who is the subject of the information s7(2)(b)(ii) and the withholding of which is necessary to enable council to carry on, without prejudice or disadvantage, negotiations (including commercial and industrial negotiations) s7(2)(i).

3. That the Independent Advisors be permitted to stay during business with the public excluded.

**Carried**

*Secretarial Note: The meeting adjourned at 11.36am and reconvened at 11.49am to address business with the public excluded.*

## Open Meeting

### Moved (Blackwell/Shortland)

That the council resumes in open meeting.

**Carried**

## Confirming of confidential minutes in open meeting

The confidential resolutions confirmed in open meeting were as follows:

### Confirmation of Confidential Minutes - 27 May 2025 (Confidential Item 10.1)

Report from Meloney Tupou, Māori Governance and Engagement Support Admin

### Moved (Carr/Macdonald)

That the confidential minutes of the council meeting held on 27 May 2025, be confirmed as a true and correct record and that these be duly authenticated with the Chair's electronic signature.

**Carried**

## **Receipt of Confidential Committee Minutes (Confidential Item 10.2)**

**Report from Meloney Tupou, Māori Governance and Engagement Support Admin**

**Moved (Craw/Blackwell)**

That the unconfirmed confidential minutes of the:

- Audit and Risk Committee - 20 May 2025 and
- Investment Committee – 3 June 2025

be received.

**Carried**

## **Northport Group Limited Director Appointments (Confidential Item 10.3)**

**Report from Bruce Howse, Pou Taumatua – Group Manager Corporate Services**

**Moved (Jones/Carr)**

1. That the report 'Northport Group Limited Director Appointments' by Bruce Howse, Pou Taumatua – Group Manager Corporate Services and dated 16 May 2025, be received.

**Carried**

**It was further moved (Craw/Blackwell)**

2. That council appoints David Pilkington, Lindsay Faithfull and Julian Smith as directors on the Northport Group Limited board, for an appointment term of three years.

**Carried**

## **Property Sales (Tranche 1 and 2) for Northport Group Ltd Transaction (Confidential Item 10.4)**

**Report from Phil Heatley, Strategic Projects and Facilities Manager**

**Moved (Stolwerk/Craw)**

1. That the report 'Property Sales (Tranche 1 and 2) for Northport Group Ltd Transaction' by Phil Heatley, Strategic Projects and Facilities Manager and dated 5 June 2025, be received.
2. That council approve the sale of the Tranche 1 and 2 properties subject to recommendation 3 below.
3. That the Chief Executive Officer is satisfied that:
  - a. The sale price is above, at or close to market value as confirmed by a valuer engaged by council;
  - b. The properties are first offered to Mana Whenua for purchase as per the Property Sale Process policy;
  - b. Council has complied with all statutory, regulatory (and policy) obligations that relate to the sale of the property;

- c. The Sale and Purchase Agreement includes any further conditions of sale deemed to be useful, reasonable, and appropriate in his view having taken legal or other professional advice, if required.
4. That council approve proceeds of the sales, less costs of sale, be held for funding of the Northport Group Ltd transaction;
5. That council not sell Tāika Forest but hold it separate to the investment property portfolio in recognition that ownership provides benefits other than the forestry income returns that are significantly lower than the 7% targeted in council's investment strategy, and that:
  - a) staff prepare a comprehensive plan on how and for what purpose Taika Forest is held and what the strategic objectives and funding sources are to achieve those outcomes, and that:
  - b) the draft plan be brought back to a subsequent council meeting for council consideration and ratification.

**Carried**

### **Kōtuku Solar Project (Confidential Item 10.5)**

**Report from Phil Heatley, Strategic Projects and Facilities Manager**

**Moved (Macdonald/Blackwell)**

1. That the report 'Kōtuku Solar Project' by Phil Heatley, Strategic Projects and Facilities Manager and dated 9 June 2025, be received.
2. That council approve \$55,000 of funding from the Property Reinvestment Fund portion of the Long-Term Investment Fund to undertake preliminary work on the Kōtuku Solar Project (the Project).
3. That council approve further expenditure of up to \$5,000 plus GST for contingencies, if required.
4. That the Project target a >7% return on capital, noting this is councils Investment Strategy target.
5. That council note that during preliminary work, Management will halt spending should, at any point, the Project appear non-viable.

**Carried**

### **Lake Ōmāpere Restoration Project (Confidential Item 10.6)**

**Report from Ruben Wylie, Pou Tiaki Taiao**

**Moved (Carr/Blackwell)**

1. That the report 'Lake Ōmāpere Restoration Project' by Ruben Wylie, Pou Tiaki Taiao and dated 12 June 2025, be received.
2. That the full remaining budget of \$290,000 allocated from the equalisation reserve to fund the development of a Harbour Remediation Business Case (as per Item 7.4 of the 26 April 2022 council meeting) be reallocated as a grant to be issued to the Lake Ōmāpere Trust.

3. That the purpose of the \$290,000 grant is to co-fund pre-construction technical work, including hard engineering solution assessment, required as part of the Lake Ōmāpere Restoration Project Regional Infrastructure Grant Fund arrangement between Lake Ōmāpere Trust and Kanoa - Regional Economic Development & Commercial Services
4. That the Chief Executive is authorised to enter into a contract with the Lake Ōmāpere Trust to allocate up to \$290,000, subject to his satisfaction of the following conditions:
  - a. sufficient certainty and clarity as to the specific milestones and deliverables the funding will be allocated towards;
  - b. suitably qualified expert analysis and advice that the proposed restoration project will not have adverse ecological outcomes and will result in demonstrably improved lake water quality;
  - c. Notwithstanding clause (b), the Chief Executive may provide for the release of funds via the contract for preliminary engineering or investigative work including, but not limited to bathymetric surveys, pre-European lake level, subsequent lake level modifications and nutrient budget (including the impact of water fowl) that is strictly necessary to generate the information required for the expert analysis set out in clause (b).
  - d. appropriate reporting and monitoring requirements; and
  - e. any other matter or condition deemed necessary to support the successful delivery of the project.
5. That \$1,000,000, at a rate of \$200,000 per year over five years, is allocated from the Land and Freshwater Management Reserve as a grant to Lake Ōmāpere Trust for the purpose of catchment remediation activities consistent with the purpose of the reserve.
6. That the Chief Executive is authorised to enter into a \$1,000,000 grant funding agreement between council and Lake Ōmāpere Trust terms, subject to his satisfaction of the following conditions:
  - a. sufficient certainty and clarity as to the specific milestones and deliverables the funding will be allocated towards;
  - b. suitably qualified expert analysis and advice that the proposed restoration project will not have adverse ecological outcomes and will result in demonstrably improved lake water quality.
  - c. all necessary legislative consents and authorisations to carry out the restoration project, in its entirety, have been obtained.
  - d. any and all necessary landowner consent and approvals for activities carried out on private property.
  - e. confirmation that all necessary funding has been obtained to implement the project in its entirety.
  - f. compliance with all terms and conditions of Kanoa funding
  - g. sufficient certainty and clarity as to the specific activities and deliverables the funding will contribute towards.
  - h. appropriate reporting and monitoring requirements.
  - i. any other matter or condition deemed necessary to support the successful delivery of the project.

7. That council notes that its financial contributions towards the restoration of Lake Ōmāpere does not in any way restrict council's rights and obligations through the Fast Track Approvals process.

**Carried** (*unanimously*)

### **Oruku Landing Conference and Events Centre (Item 10.7)**

**Report from Stephanie Versteeg, Kaitohutohu Matua / Principal Advisor and Darryl Jones, Economist**

#### **Moved (Blackwell/Craw)**

1. That the report 'Oruku Landing Conference and Events Centre' by Stephanie Versteeg, Kaitohutohu Matua / Principal Advisor and Darryl Jones, Economist and dated 12 June 2025, be received.

**Carried**

#### **Moved (Craw/Shortland)**

- 2a. That council agree to provide a letter acknowledging the significant regional benefits of a hotel/conference centre and look forward to further details regarding the proposal.

**Carried** (*Unanimously*)

#### **It was further moved (Macdonald/Craw)**

2. That council notes the current proposal is likely to be materially different from that considered when approving a funding commitment to the project in 2022 and, consequently, a new decision would be needed to provide financial support for the revised proposal.

**Carried** (*Unanimously*)

### **Whakamutunga (Conclusion)**

The meeting concluded at 1.38pm with a karakia by the GM – Governance and Engagement.